

Server Technology

Technical Data Sheet

-48VDC Switched Rack PDU

48DCWB-04-4X125-E0NB: 24kW (4) 125A Inputs and (4)125A Max Outputs

Sep 2016 | Version 1.0



This Intelligent PDU and Remote Power Manager minimizes the impact of locked-up routers, servers and other network devices on business-critical networks. CLECs, ILECs, ISPs and enterprises use this PDU to manage equipment in remote sites, co-location facilities and network operation centers. This PDU eliminates the need to dispatch a field service technician for manual intervention when devices lock-up. Using this PDU, the network operations center can quickly restart locked-up remote network servers to ensure that the network is fully operational around the clock.

Features and Specifications



Disconnect Rated Circuit Protection

Each output is protected by a fuse or circuit breaker and is rated for hot disconnect.



Output Current Monitoring

Network monitoring provides access to current draw at each output and alerts when high usage risks a tripped circuit.



Output Control

Cycle power to individual outputs or groups of outputs to reboot devices or to power off unused terminals.

North America

Master PDU	Link PDU	Inputs	Outputs	Input Voltage	Rated Power
48DCWB-04-4X125-E0NB	48DCXB-04-4X125-E0NB	(4) 125A Inputs	(4) Switched Outputs 125A Max	-40 to -60 VDC	24kW @ -48VDC

Inputs

- Connector: 4 pair of 1/4-20 Stainless Steel Lugs
- Rating: 125A each -48VDC

Outputs

- Connector: 4 pair of 1/4-20 Stainless Steel Lugs
- Rating: 125A maximum each -48VDC

Circuit Protection

- All fuses are sold separately. Fuses and their values must be specified at time of order

TPC (High Current)

10A P/N FUZE-TPC-10

15A P/N FUZE-TPC-15

20A P/N FUZE-TPC-20

25A P/N FUZE-TPC-25

30A P/N FUZE-TPC-30

40A P/N FUZE-TPC-40

50A P/N FUZE-TPC-50

60A P/N FUZE-TPC-60

75A P/N FUZE-TPC-75

100A P/N FUZE-TPC-100

125A P/N FUZE-TPC-125

Specifications Cont.

Physical/Environmental

- Dimensions: 2.5U - 4.4" (112 mm) tall x 17.0" (432 mm) wide x 16" (407 mm) deep | Weight: 30.3 lbs (13.27 kg)
- Shipping Dimensions: 19.7" x 19.7" x 6.5" (50.1 cm x 50.1cm x 16.5 cm) | Weight: 35 lbs (15.9 kg)

- Operating Environment: 32°F to 104°F / 0°C to 40°C | 8%RH to 90%RH non-condensing | 6,500ft/2000m elevation
- Storage Environment: -40°F to 185°F / -40°C to 85°C | 8%RH to 90%RH non-condensing | 50,000ft/15km elevation

Communications and Security

- 10/100 Mbps Ethernet (RJ-45 connector), RS-232 serial (RJ-45 connector)
- Two (2) temperature/humidity sensor inputs (4P4C), Link port (RJ-12) – {also on Link CDU}
- Web-browser GUI and command-line-interface (CLI): HTTP/HTTPS, TLSv1, SSHv2, Telnet, SNMPv2c and v3 (GET, SET, Traps), IPv4 and IPv6, LDAPv3/LDAPS, TACACS+, RADIUS, FTP/SFTP

Certifications

- cTUVus Mark to UL 60950-1:2007 and CAN/CSA 22.2 No. 60950-1-07 + A1:2011
- TUV T-Mark to EN 60950-1:2006 + A11 + A1 + A12
- EMC to EN 55022 Class A, EN 55024, CISPR 22 Class A
- FCC Class A, Part 15
- CE Mark

NEBS Level 3 Compliance / Switched PDU

- GR-1089-Core: Sections 1-4, 7, 9, & 10
- GR-63-Core: Sections 4.1, 4.2, 4.3, 4.4, 4.5, & 4.7
- ETSI EN 300 019-2-1 v2.1.2: 2000-09
- ETSI EN 300 019-2-2 v2.1.2: 1999-09
- ETSI EN 300 019-2-3 v2.2.2: 2003-04
- ETSI EN 300 132-2 V2.2.2: 2007-10



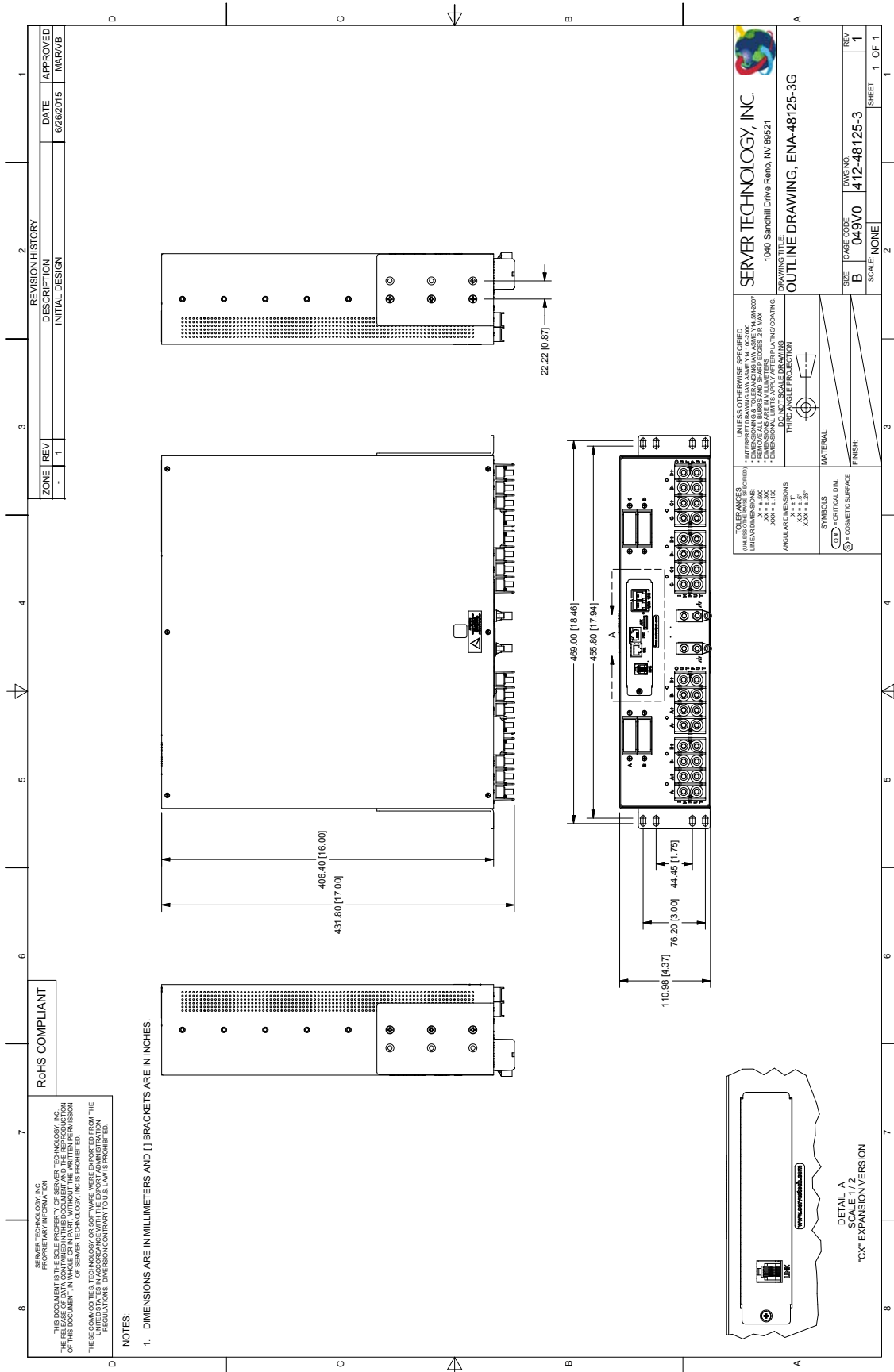
Optional Accessories

- EMTH-1-1 Combination Temperature/Humidity Probe, 10ft (3m)

- SPM (Sentry® Power Manager):
 - Monitor and manage multiple PDUs from a single point
 - Monitor and manage alarm conditions
 - Create reports and trends on stored data
 - Analyze power usage per phase
 - Optional appliance or virtual version
 - VMware Ready²



Dimensional Specifications



Additional Information

Warranty: Server Technology offers a standard 2-year limited parts & labor warranty. Extended support is available at the time of purchase. See the Support Options on the website, or contact your local Server Technology representative for more information.

Patents: Information on Server Technology patents is available on the website at:

www.servertech.com/products/patents

PRO2, HDOT, PIPS, POPS, CDU, Sentry, Server Technology, the ST Eye logo, and the globe logo are U.S. registered trademarks of Server Technology, Inc. Power Pivot, EZip, and StartUp Stick are trademarks of Server Technology, Inc.

Information in this document is current as of time of publishing. Contact your Server Technology representative for the most up-to-date information. © 2016 Server Technology, Inc.

¹ Cisco EnergyWise is a U.S. registered trademark of Cisco Technology, Inc.

² VMware and VMware Ready is a registered trademark or trademark of VMware, Inc. in the United States and/or other jurisdictions.



Server Technology

HEADQUARTERS -
NORTH AMERICA
Server Technology, Inc.
1040 Sandhill Drive
Reno, NV 89521
United States
1.775.284.2000 Tel
1.775.284.2065 Fax
sales@servertech.com
www.servertech.com
www.servertechblog.com

Western Europe, Middle East and
Africa
Server Technology
Fountain Court
2 Victoria Square
Victoria Street
St. Albans
AL1 3TF
United Kingdom
+44 (0) 1727 884676 Tel
+44 (0) 1727 220815 Fax
salesint@servertech.com

Central Europe, Eastern Europe and
Russia
Niederlassung Deutschland
Server Technology LLC
42119 Wuppertal
Germany
Tel: + 49 202 693917 x 0
Fax: + 49 202 693917-10
salesint@servertech.com

APAC
Server Technology
Room 2301, 23/F, Future Plaza
111-113 How Ming Street,
Kwun Tong, Hong Kong
Direct line: +852 3916 2048
Fax Line: +852 3916 2002
salesint@servertech.com