

# Server Technology Technical Data Sheet

## -48VDC Switched Rack PDU

48DCWB-16-2X600-E0 : 57.6kW (2) 600A Inputs and (16)125A Max Outputs

Sep 2016 | Version 1.0



This Intelligent PDU and Remote Power Manager minimizes the impact of locked-up routers, servers and other network devices on business-critical networks. CLECs, ILECs, ISPs and enterprises use this PDU to manage equipment in remote sites, co-location facilities and network operation centers. This PDU eliminates the need to dispatch a field service technician for manual intervention when devices lock-up. Using this PDU, the network operations center can quickly restart locked-up remote network servers to ensure that the network is fully operational around the clock.

# Features and Specifications



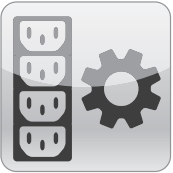
## Disconnect Rated Circuit Protection

Each output is protected by a fuse or circuit breaker and is rated for hot disconnect.



## Output Current Monitoring

Network monitoring provides access to current draw at each output and alerts when high usage risks a tripped circuit.



## Output Control

Cycle power to individual outputs or groups of outputs to reboot devices or to power off unused terminals.

## North America

Master PDU	Link PDU	Inputs	Outputs	Input Voltage	Rated Power
48DCWB-16-2X600-E0	48DCXB-16-2X600-E0	(2) 600A Inputs	(16) Switched Outputs 125A Max	-40 to -60 VDC	57.6kW @ -48VDC

### Inputs

- Connector: 2 pair of 3/8-16 Stainless Steel Lugs
- Rating: 600A each -48VDC

### Outputs

- Connector: 16 pair of 1/4-20 Stainless Steel Lugs
- Rating: 125A maximum each -48VDC

### Circuit Protection

- All fuses/breakers are sold separately. Fuses/breakers and their values must be specified at time of order
- For fuses KIT-0094 is required, for breakers KIT-0097 is required

TPC Fuses	Breakers
10A P/N FUZE-TPC-10	30A P/N CB-0005-030G
15A P/N FUZE-TPC-15	50A P/N CB-0005-050G
20A P/N FUZE-TPC-20	60A P/N CB-0005-060G
25A P/N FUZE-TPC-25	70A P/N CB-0005-070G
30A P/N FUZE-TPC-30	100A P/N CB-0005-100G
40A P/N FUZE-TPC-40	
50A P/N FUZE-TPC-50	
60A P/N FUZE-TPC-60	
75A P/N FUZE-TPC-75	
100A P/N FUZE-TPC-100	
125A P/N FUZE-TPC-125	

# Specifications Cont.

## Physical/Environmental

- Dimensions: 4U - 7.0" (176 mm) tall x 17.0" (432 mm) wide x 32" (813 mm) deep | Weight: 125 lbs (57 kg)
- Shipping Dimensions: 40" x 35" x 24" (102 cm x 90cm x 61 cm) | Weight: 138 lbs (62.6 kg)
  
- Operating Environment: 32°F to 104°F / 0°C to 40°C | 8%RH to 90%RH non-condensing | 6,500ft/2000m elevation
- Storage Environment: -40°F to 185°F / -40°C to 85°C | 8%RH to 90%RH non-condensing | 50,000ft/15km elevation

## Communications and Security

- 10/100 Mbps Ethernet (RJ-45 connector), RS-232 serial (RJ-45 connector)
- Two (2) temperature/humidity sensor inputs (4P4C), Link port (RJ-12) – {also on Link CDU}
- Web-browser GUI and command-line-interface (CLI): HTTP/HTTPS, TLSv1, SSHv2, Telnet, SNMPv2c and v3 (GET, SET, Traps), IPv4 and IPv6, LDAPv3/LDAPS, TACACS+, RADIUS, FTP/SFTP

## Certifications

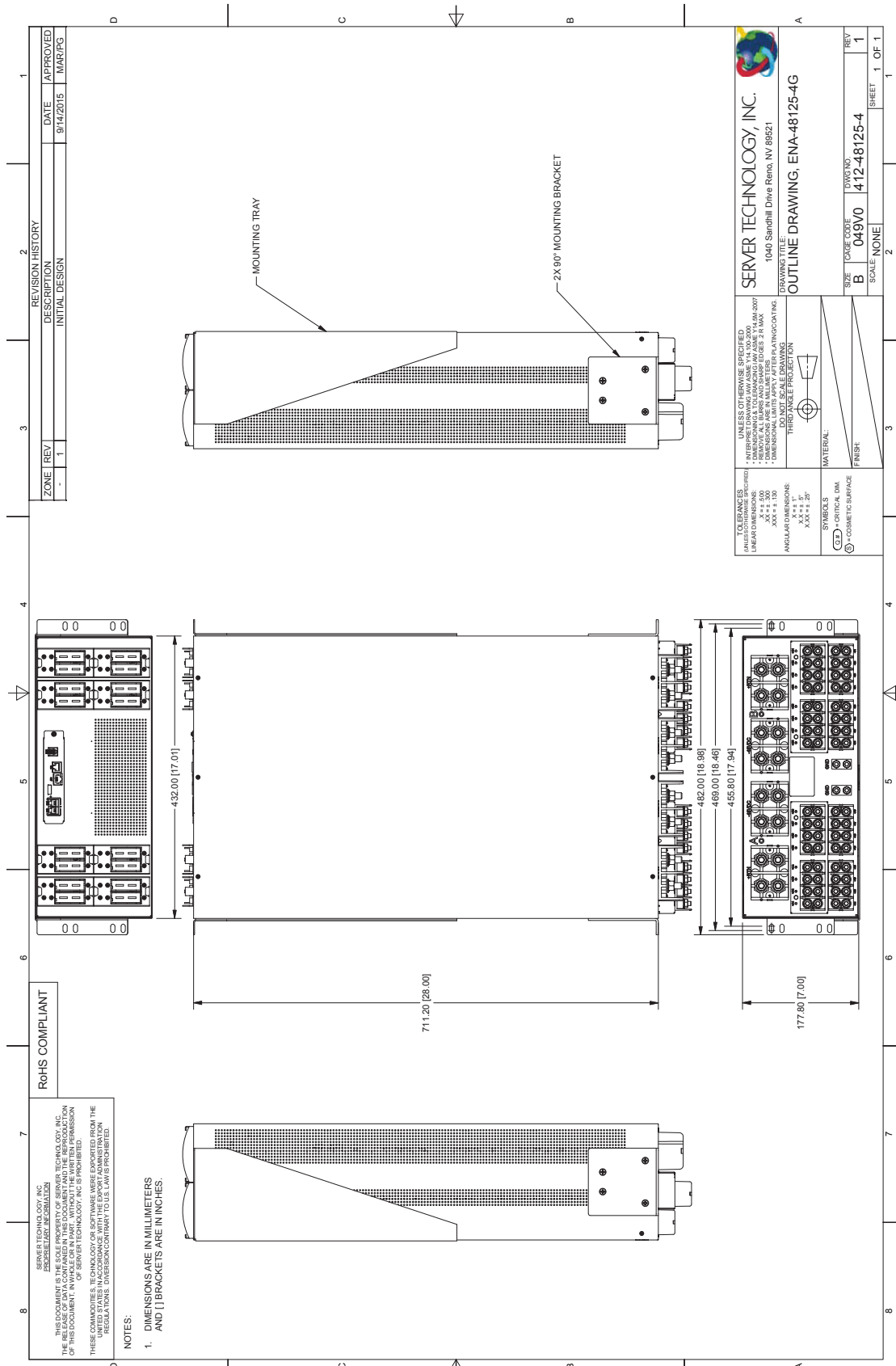
- cTUVus Mark to UL 60950-1:2007 and CAN/CSA 22.2 No. 60950-1-07 + A1:2011
- TUV T-Mark to EN 60950-1:2006 + A11 + A1 + A12
- EMC to EN 55022 Class A, EN 55024, CISPR 22 Class A
- FCC Class A, Part 15
- CE Mark

## Optional Accessories

- EMTH-1-1 Combination Temperature/Humidity Probe, 10ft (3m)
  
- SPM (Sentry® Power Manager):
  - Monitor and manage multiple PDUs from a single point
  - Monitor and manage alarm conditions
  - Create reports and trends on stored data
  - Analyze power usage per phase
  - Optional appliance or virtual version
  - VMware Ready<sup>2</sup>



# Dimensional Specifications



# Additional Information

Warranty: Server Technology offers a standard 2-year limited parts & labor warranty. Extended support is available at the time of purchase. See the Support Options on the website, or contact your local Server Technology representative for more information.

Patents: Information on Server Technology patents is available on the website at:

**[www.servertech.com/products/patents](http://www.servertech.com/products/patents)**

PRO2, HDOT, PIPS, POPS, CDU, Sentry, Server Technology, the ST Eye logo, and the globe logo are U.S. registered trademarks of Server Technology, Inc. Power Pivot, EZip, and StartUp Stick are trademarks of Server Technology, Inc.

Information in this document is current as of time of publishing. Contact your Server Technology representative for the most up-to-date information. © 2016 Server Technology, Inc.

<sup>1</sup> Cisco EnergyWise is a U.S. registered trademark of Cisco Technology, Inc.

<sup>2</sup> VMware and VMware Ready is a registered trademark or trademark of VMware, Inc. in the United States and/or other jurisdictions.



HEADQUARTERS -  
NORTH AMERICA  
Server Technology, Inc.  
1040 Sandhill Drive  
Reno, NV 89521  
United States  
1.775.284.2000 Tel  
1.775.284.2065 Fax  
sales@servertech.com  
www.servertech.com  
www.servertechblog.com

Western Europe, Middle East and  
Africa  
Server Technology  
Fountain Court  
2 Victoria Square  
Victoria Street  
St. Albans  
AL1 3TF  
United Kingdom  
+44 (0) 1727 884676 Tel  
+44 (0) 1727 220815 Fax  
salesint@servertech.com

Central Europe, Eastern Europe and  
Russia  
Niederlassung Deutschland  
Server Technology LLC  
42119 Wuppertal  
Germany  
Tel: + 49 202 693917 x 0  
Fax: + 49 202 693917-10  
salesint@servertech.com

APAC  
Server Technology  
Room 2301, 23/F, Future Plaza  
111-113 How Ming Street,  
Kwun Tong, Hong Kong  
Direct line: +852 3916 2048  
Fax Line: +852 3916 2002  
salesint@servertech.com