

Using Sentry Power Manager (SPM) as an FTP Server

Purpose

SPM 4.3.2 (and higher) now has the capability to work as an FTP server to upgrade Sentry firmware releases to your Cabinet Distribution Units (CDUs), allowing access to new Sentry firmware and features. The binary firmware files from Server Technology for the upgrade can be uploaded to SPM, and you can then configure your CDU to login via FTP to your SPM to download the files for the upgrade.

Note: SPM as an FTP Server applies specifically to SPM version 4.3.2 and higher.

Overview

This technical note provides the detailed instructions for using SPM 4.3.2 as an FTP server. The process includes three general areas:

- The binary firmware files you receive from Server Technology's **SMARTER** Technical Support.
- Enabling FTP through SPM and configuration of the FTP port.
- Configuration of the FTP host, username/password, directory, and filename on the CDU via the Sentry firmware, using either the HTML Interface or the Command Line Interface (CLI) for the configuration.

Before You Begin

Ensure the following items are in place before starting the SPM FTP process:

- Each Sentry CDU has been installed on the network, has been assigned a static IP address, and is accessible by a web browser.
- You must have administrative-level privileges to initiate this FTP upload.
- SPM must be version 4.3.2 or higher.
- For additional product information, refer to the Installation and Operations Manual for the applicable Sentry unit and the SPM 4.3 Operations Manual, both located at www.servertech.com.

Instructions

The following step-by-step instructions configure SPM as an FTP server.

Note: Screen samples in this document may vary depending on your Sentry product.

Section 1: Managing the Binary Firmware Files

1. Obtain firmware binary files for the upgrade at [ftp://ftp.servertech.com/pub/firmware/Sentry3/](http://ftp.servertech.com/pub/firmware/Sentry3/)

For example:

FTP directory /pub/firmware/Sentry3/ at ftp.servertech.com

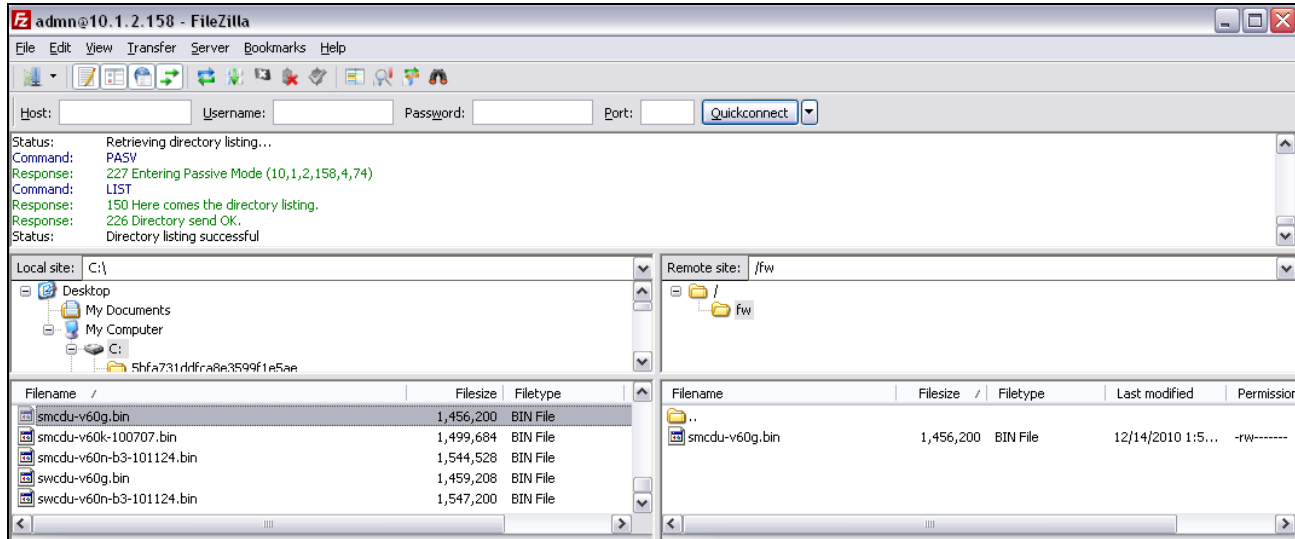
To view this FTP site in Windows Explorer, click **Page**, and then click **Open FTP Site in Windows Explorer**.

[Up to higher level directory](#)

```
08/12/2009 12:00AM      Directory .
08/12/2009 12:00AM      Directory ..
08/12/2009 12:00AM      Directory AutoUpdate
08/12/2009 12:00AM      Directory TYPSoft FTP Server
08/12/2009 12:00AM      Directory Version 5
08/12/2009 12:00AM      Directory Version 6
```

- Copy the firmware binary files for your upgrade to a directory **off the root drive of the FTP user login**. Files placed at the root level will be deleted.

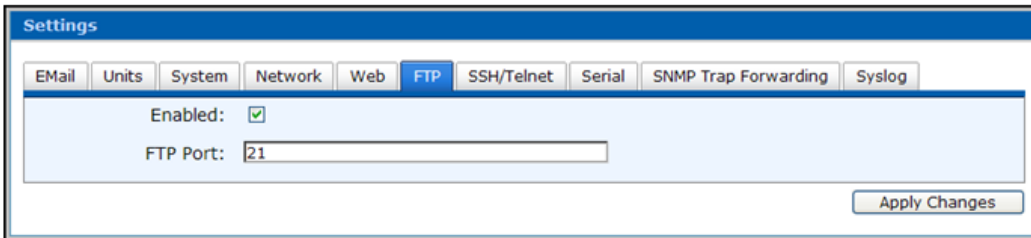
For example, create a directory called “fw” and place the binary firmware files in the “fw” directory, as shown in the following FileZilla example:



You can copy the files as you like; FileZilla is not required, but only shown as one way to manage the copy.

Section 2: Configuring SPM for the FTP Port

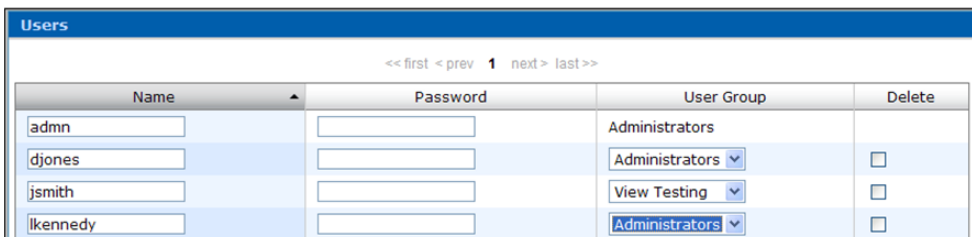
- Login to Sentry Power Manager (SPM), version 4.3.2 administrator account.
- Select **Config > Settings > FTP**. The FTP window displays:



- Configure FTP by checking the Enabled checkbox and setting the FTP port number to 21.

Note: FTP must be enabled for the SPM FTP Server process to work. In addition, the Sentry CDUs require the FTP port number to be 21.

- Click **Apply Changes**.
- Select **Config > Users & Groups > Users**. The Users window displays:



6. Create a new administrator's account (by clicking **Add New User** button, not shown on the above partial screen sample), and provide the new user Name, Password, and select Administrators for the User Group. You can also assign Administrators to an existing user name, as shown above.

Section 3: Configuring the Cabinet Distribution Unit (CDU)

The last part of the process is to configure parameters on the CDU via the Sentry firmware. You can use either the HTML Interface or the Command Line Interface (CLI) for this FTP configuration.

If you use the HTML interface:

1. Login to the Sentry firmware with an administrator account.
2. Select **Configuration > FTP** to display the Sentry firmware FTP window.

3. Configure the FTP client options by providing Host, Username, Password, Directory, and Filename.

Note: Set the username and password to the identical administrator's account you created in SPM in step 6 above.

4. To verify your settings, press the **Test** button and correct any errors. A successful test returns the "Test passed" message. If you see "Test failed" errors, a description will be provided, such as "image not supported on this system" due to using a CDU product filename (such as smcdv-v60g.bin for the Smart product), and the firmware interface you are using (such as Sentry Switched CDU). Or, you may receive an error for an incorrectly typed name in any of the fields.
5. You can configure an automatic FTP update and schedule the update by day/hour, and enable your FTP options, as shown above in the screen sample. Configuring an automatic update prevents the need to manually initiate an FTP upload session with the Restart page.

If you use the Command Line Interface (CLI) interface:

1. Login to the Sentry firmware with an administrator account
2. On the product's command line, issue the following commands:

To set the Host to the IP address of SPM, type:

set ftp host [IP address or host name] and press **Enter**.

To set the FTP username as required by the FTP Host, type:

set ftp username [FTP username] and press **Enter**.

To set the FTP password as required by the FTP Host, type:

set ftp password [FTP password] and press **Enter**.

To set the FTP for the firmware file to be uploaded, type:

set ftp directory [directory name] and press **Enter**.

Note: Alternately, you may choose to set the full filepath to the directory. If so, type:

set ftp filepath [directory name] and press **Enter**.

To set the FTP filename of the firmware file to be uploaded, type:

set ftp filename [firmware filename] and press **Enter**.

3. You can configure an automatic FTP update and schedule the update by day/hour, and enable your FTP options, as shown in the following commands. Configuring an automatic update prevents the need to manually initiate an FTP upload session with the **restart ftpload** command.

To enable automatic updates, type:

set ftp autoupdate, followed by **enabled** and press **Enter**.

To set the automatic update scheduled day, type:

set ftp autoupdate day, followed by the day of the week, or **everyday**, and press **Enter**.

To set the automatic update scheduled hour, type:

set ftp autoupdate hour, followed by an hour of the day, followed by **am** or **pm**, and press **Enter**.

Contact Technical Support



Experience Server Technology's FREE Technical Support

Server Technology understands that there are often questions when installing and/or using a new product. Free Technical Support is provided from 8 a.m. to 5 p.m. PST, Monday through Friday. After-hours service is provided to ensure your requests are handled quickly no matter what time zone or country you are located in.

Server Technology, Inc.

1040 Sandhill Drive

Tel: 1-800-835-1515

Web: www.servertech.com

Reno, Nevada 89521 USA

Fax: 775-284-2065

Email: support@servertech.com



Server Technology, the Globe logo, Sentry, Switched CDU, CDU, PRO2, PIPS, POPS, PDU Power Pivot, and StartUp Stick are trademarks of Server Technology, Inc., registered in the US. EZip is a trademark of Server Technology.

Other trademarks and trade names may be used in this document to refer to either the entities claiming the marks and names or their products. Server Technology, Inc. disclaims any proprietary interest in trademarks and trade names other than its own.