



Server Technology

Solutions for the Data Center Equipment Cabinet

Sentry

-48 VDC, XLS Series

Installation and Operations Manual

**Instructions**

This symbol is intended to alert the user to the presence of important operating and maintenance (servicing) instructions in the literature accompanying the appliance.

**Dangerous Voltage**

This symbol is intended to alert the user to the presence of un-insulated dangerous voltage within the product's enclosure that may be of sufficient magnitude to constitute a risk of electric shock to persons.

**Protective Grounding Terminal**

This symbol indicates a terminal that must be connected to earth ground prior to making any other connections to the equipment.

Life-Support Policy

As a general policy, Server Technology does not recommend the use of any of its products in the following situations:

- life-support applications where failure or malfunction of the Server Technology product can be reasonably expected to cause failure of the life-support device or to significantly affect its safety or effectiveness.
- direct patient care.

Server Technology will not knowingly sell its products for use in such applications unless it receives in writing assurances satisfactory to Server Technology that:

- the risks of injury or damage have been minimized,
- the customer assumes all such risks, and
- the liability of Server Technology is adequately protected under the circumstances.

The term life-support device includes but is not limited to neonatal oxygen analyzers, nerve stimulators (whether used for anesthesia, pain relief or other purposes), auto-transfusion devices, blood pumps, defibrillators, arrhythmia detectors and alarms, pacemakers, hemodialysis systems, peritoneal dialysis systems, neonatal ventilator incubators, ventilators (for adults or infants), anesthesia ventilators, infusion pumps, and any other devices designated as "critical" by the U.S. FDA.

Compliance

Units have been safety tested/certified to the following standards: USA and Canada to UL 1950 and CAN/CSA 22.2 No. 950-95, European Union to EN60950, NEBS GR-63-Core and GR-1089-Core.

USA Notification

Warning: Changes or modifications to these units not expressly approved by the party responsible for compliance could void the user's authority to operate the equipment under FCC rules.

Note: This equipment has been tested and found to comply with the limits for a Class A digital device, pursuant to Part 15 of the FCC Rules. These limits are designed to provide reasonable protection against harmful interference when the equipment is operated in a commercial environment. This equipment generates, uses and can radiate radio frequency energy and, if not installed and used in accordance with the instruction manual, may cause harmful interference to radio communications. Operation of this equipment in a residential area is likely to cause harmful interference in which case the user will be required to correct the interference at his own expense.

Canadian Notification

This digital apparatus does not exceed the Class A limits for radio noise emissions from digital apparatus set out in the Radio Interference Regulations of the Canadian Department of Communications.

Le présent appareil numérique n'émet pas de bruits radioélectriques dépassant les limites applicables aux appareils numériques de la classe A prescrites dans le Règlement sur le brouillage radioélectrique édicté par le Ministère des Communications du Canada.

Japanese Notification

この装置は、情報処理装置等電波障害自主規制協議会（VCCI）の基準に基づくクラスA情報技術装置です。この装置を家庭環境で使用すると電波妨害を引き起こすことがあります。この場合には使用者が適切な対策を講ずるよう要求されることがあります。

Table of Contents

CHAPTER 1: INTRODUCTION	1
Features and Benefits	2
Technical Support	3
Quick Start Guide.....	3
CHAPTER 2: INSTALLATION	5
Standard Accessories.....	6
Additional Required Items	6
Equipment Overview.....	6
Safety Precautions	7
Mounting	7
Connecting to the Power Source	7
Connecting Devices.....	7
Connecting to the Sentry	8
CHAPTER 3: OPERATIONS	9
Interfaces.....	10
HTML Interface	11
Command Line Interface.....	20
CHAPTER 4: ADVANCED OPERATIONS	39
Secure Proxy	40
SNMP.....	44
CHAPTER 5: APPENDICES	53
Appendix A: Resetting to Factory Defaults	54
Appendix B: Uploading Firmware	54
Appendix C: Technical Specifications	55
Appendix D: Warranty, Product Registration and Support.....	59

Chapter 1: Introduction

FEATURES AND BENEFITS	2
Communication Access Modes	2
Power Distribution & Remote Management	2
External Modem and Pass-Thru Support.....	2
Load and Environmental Measurement.....	2
Outlet Grouping.....	2
Security	2
User Interfaces and LEDs.....	2
Automatic Timeout	2
TECHNICAL SUPPORT	3
QUICK START GUIDE	3

Introduction

The Server Technology Inc. Sentry family of products provides easy, practical, and secure solutions for power distribution, power management and load-measurement for remote internetworking equipment and branch AC circuits.

The -48 VDC XLS series continues to support the elimination of unnecessary trips to remote locations by allowing remote control of the power on/off status for distant critical equipment, minimizing the impact of locked-up devices on mission-critical networks.

Features and Benefits

XLS units are available in 4 to 16 terminal pair configurations for -48 VDC up to 70A. See *Models* in Appendix C: Technical Specifications.

Communication Access Modes

XLS units are equipped standard with a Console RS-232 port and a 10/100 Base-T Ethernet port for Telnet and in-band web browser (HTML) access.

Power Distribution & Remote Management

XLS units distribute up to 200A DC power (dependant on XLS series model) and offer individual remote control over the power on/off status of up to 16 devices.

External Modem and Pass-Thru Support

XLS units support the connection of an external modem in addition to the standard serial connection. With no modem attached, the Modem port may be used for a Pass-Thru serial connection to an internetworking device console port for remote problem determination.

With the optionally available PT49 Commander, the XLS supports serial connection to up sixteen internetworking device console ports for remote problem determination.

Load and Environmental Measurement

The XLS unit's load measurement feature eliminates guesswork by supplying the operating load per terminal pair in amperes. This allows on-site technicians to maximize the equipment installed and operated on a circuit without worry. Use of the circuit is maximized, while effectively allowing a 10% to 20% safety margin. Remote users also may access this information at any time from the user interface.

Additionally, the XLS features an integrated Environmental Monitor for support of up to two temperature/humidity probes for monitoring of the equipment cabinet's physical environment.

Outlet Grouping

For operations across multiple attached devices or devices with multiple or redundant power supplies, XLS unit terminal pairs may be included in one or more named groups of terminal pairs. Changes may then be applied to all terminal pairs in the named group with one easy command sequence.

Security

XLS units ship with one predefined administrative user account. The administrator may create up to 128 user accounts, with individualized access to terminal pairs and commands. All accounts support username and password protection. For configurations requiring multiple fully-privileged users, the XLS allows the administrator to grant administrative privileges to other user accounts in the system.

User Interfaces and LEDs

XLS series features two user interfaces: the HTML interface and the command line. For easy recognition, both individual terminal pairs and groups may be assigned descriptive names for use in control commands. For the on-site technician, LEDs on the XLS indicate power status for individual terminal pairs.

Automatic Timeout

For added security, a user session will be automatically terminated after five minutes of inactivity; if a user is called away unexpectedly, an unprotected channel will not remain open indefinitely.

Technical Support

Server Technology understands that there are often questions when installing and/or using a new product. Free Technical Support is provided from 8:30 AM to 5:00 PM, Monday-Friday, Pacific Time. See *Technical Support* in Warranty, Product Registration and Support for more information.

Server Technology, Inc.

1040 Sandhill Drive

Reno, Nevada 89521 USA

Tel: 775.284.2000

Fax: 775.284.2065

Web: www.servertech.com

Email: support@servertech.com

Quick Start Guide

The following instructions will help you quickly install and configure your XLS for use on your network. For detailed information on each step, go to the page number listed to the right.

For your network security, Server Technology strongly recommends the removal of the predefined user account prior to attachment to your network.

1. Mount the XLS.....7
2. Connect to the power source7
3. Connect the devices to the XLS7
4. Connect to the XLS8
5. Configure the XLS8
 - Login as the predefined Administrator (admn/admn) 11, 20
 - Configure the network settings (IP/Subnet/Gateway)..... 14, 35
 - Create new administrative user account..... 16, 26
 - Configure location and tower names 13, 33
 - Configure outlet names 16, 30
 - Configure group names 16, 29
 - Configure new user account(s) with outlet and group access 16, 26
 - Remove the predefined Administrator 16, 26
6. Connect the XLS to the network

Chapter 2: Installation

STANDARD ACCESSORIES	6
ADDITIONAL REQUIRED ITEMS	6
EQUIPMENT OVERVIEW	6
SAFETY PRECAUTIONS	7
MOUNTING	7
CONNECTING TO THE POWER SOURCE	7
CONNECTING DEVICES	7
CONNECTING TO THE SENTRY	8
<i>Console (RS232) port</i>	8
<i>Ethernet port</i>	8
<i>Modem port</i>	8

Installation

Before installing your Sentry, refer to the following lists to ensure that you have all the items shipped with the unit as well as all other items required for proper installation.

Standard Accessories

- Mounting bracket hardware: two mounting brackets and four screws
- RJ45 to RJ45 crossover cable
- DB9 female to DB25 male cable
- RJ45 to DB9F serial port adapter (for connection to standard DB9M DTE serial port)

Additional Required Items

- Flathead and Phillips screwdrivers
- 10mm socket wrench or nut-driver
- Screws, washers and nuts to attach the Sentry to your rack

Equipment Overview

A number is printed above each terminal pair. These numbers may be used in commands that require an outlet name. The power inlet connects to the electrical power source.

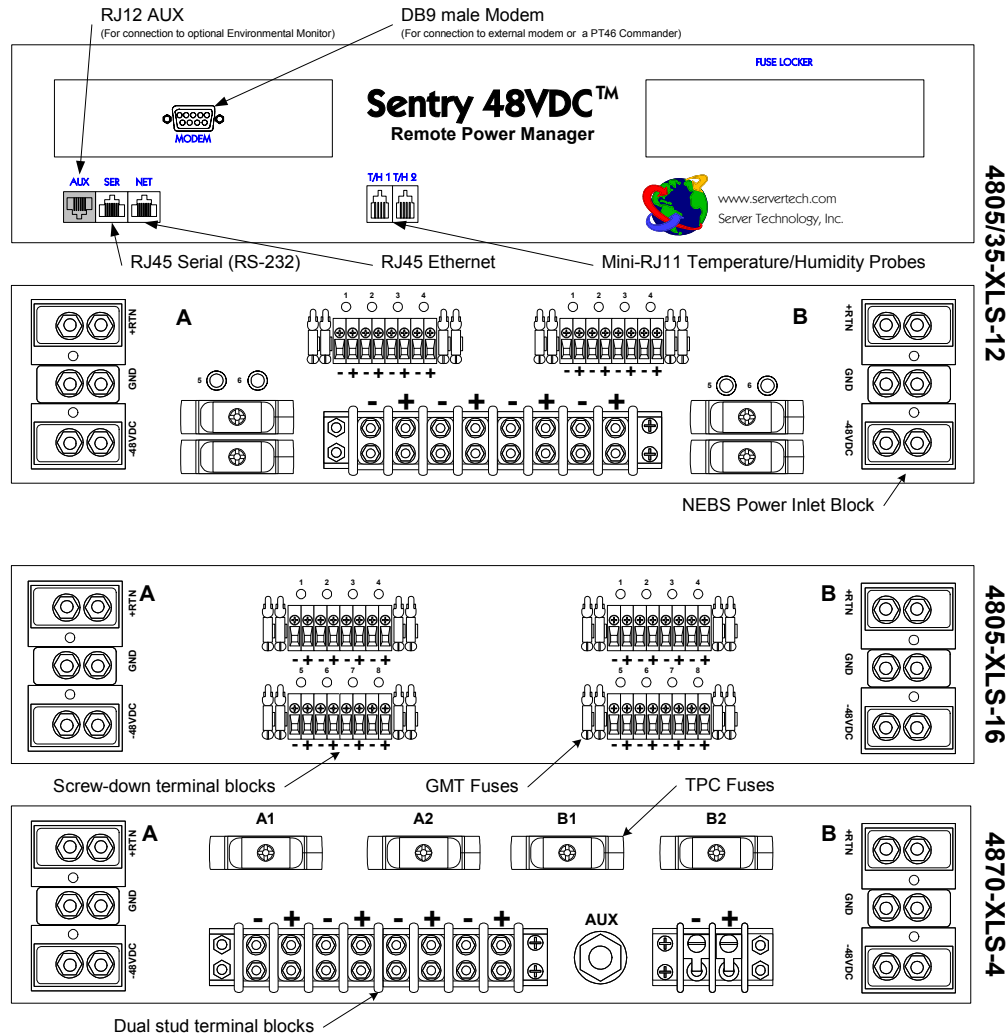





Figure 2.1 Sentry Product Views

Safety Precautions

This section contains important safety and regulatory information that should be reviewed before installing and using the Sentry product. For input and output current ratings, see *Power Ratings* in Appendix C: Technical Specifications.

	Only for installation and use in a Service Access Location in accordance with the following installation and use instructions.	<i>Destiné à l'installation et l'utilisation dans le cadre de Service Access Location selon les instructions d'installation et d'utilisation.</i>	Nur für Installation und Gebrauch an Anschlusszugriffspunkten gemäß der folgenden Installations- und Gebrauchsanweisungen.
	WARNING! High leakage current! Earth connection is essential before connecting supply!	ATTENTION ! <i>Haut fuite très possible ! Une connection de masse est essentielle avant de connecter l'alimentation !</i>	ACHTUNG! Hoher Verluststrom! Ein Erdungsanschluss ist vor dem Einschalten der Stromzufuhr erforderlich!
	Always disconnect all power supply cords before opening to avoid electrical shock.	<i>Afin d'éviter tout choc électrique, assurez-vous de toujours débrancher les câbles d'alimentation électrique avant d'ouvrir.</i>	Ziehen Sie vor dem Öffnen immer die Netzkabel heraus, um die Gefahr eines elektrischen Schlags zu vermeiden.
	Connect to VDC source that is electrically isolated from the AC source and reliably connected to earth.	<i>Brancher à une source de tension continue isolée de la source de tension alternative et mise à la terre adéquatement.</i>	Schließen Sie das Gerät an eine Gleichstromquelle an, die von der Wechselstromquelle galvanisch getrennt und sachgemäß geerdet ist.
	Grounding wire should be bare copper and one size larger than the inlet cables.	<i>Le fil de mise à la terre doit être en cuivre nu et d'une taille supérieure aux câbles d'entrée.</i>	Verwenden Sie zur Erdung einen Kupferdraht, der um eine Stärke stärker ist als die Eingangskabel.
	Remove fuses/open circuit breakers for terminal pairs prior to connecting inlets to power source.	<i>Retirer les fusibles et ouvrir les disjoncteurs pour connecter les paires de bornes avant de brancher les câbles d'entrée à la source d'alimentation.</i>	Entfernen Sie die Sicherungen/schalten Sie die Leistungsschalter für die Klemmenpaare aus, bevor Sie die Eingänge an die Stromquelle anschließen.
	Inlet & outlet safety covers must be installed for safe operation.	<i>Pour une utilisation sécuritaire, les couvercles de sûreté des prises d'entrée et de sortie doivent être installés.</i>	Zum sicheren Betrieb müssen die Ein- und Ausgangsabdeckungen installiert sein.

Mounting

1. Select the appropriate bracket mounting points for proper mounting depth within the rack.
2. Attach the brackets to these mounting points with two screws for each bracket.
3. Install the enclosure into your rack, using the slots in each bracket. The slots allow about ¼ inch of horizontal adaptability to align with the mounting holes of your rack.

NOTE: A mounting bracket kit for 23" wide racks or cabinets is available. Contact your Server Technology Sales Representative for more information.

Connecting to the Power Source

NOTE: Reverse polarity will damage the Sentry Remote Power Manager. Verify proper polarity before connecting to a power source.

1. Verify power source polarity and remove the fuses/open circuit breakers for all outlet terminal pairs.
2. Attach the appropriate input power cable(s) for your installation's operating voltage.
3. Attach the opposite end of the power cable(s) to the power source.

Connecting Devices

To avoid the possibility of noise due to arcing:

1. Keep the device's on/off switch in the off position until after it is properly attached to the output terminals, or
Log in to the Sentry and turn the output terminals off before connecting the devices to the unit(s).
2. Connect devices to the output terminals.



Always disconnect the power supply cord before opening to avoid electrical shock.
Afin d'éviter les chocs électriques, débranchez le câble électrique avant d'ouvrir.
Immer Netzleitung auskuppeln vor den Aufmachen um elektrischen Schlag zu vermeiden.

Connecting to the Sentry

Console (RS232) port

The Sentry is equipped with an RJ45 Console RS-232 port for attachment to a PC or networked terminal server using the supplied RJ45 to RJ45 crossover cable with the RJ45 to DB9F serial port adapter. See *Data Connections* in Appendix C: Technical Specifications for more information on the Console RS-232 port.

Ethernet port

The Sentry is equipped with an RJ45 10/100Base-T Ethernet port for attachment to an existing network. This connection allows access to the Sentry via Telnet or HTML.

The Sentry is configured with the following network defaults to allow unit configuration out-of-the-box through either Telnet or HTML:

- IP address: 192.168.1.254
- Subnet Mask: 255.255.255.0
- Gateway: 192.168.1.1

The local PC network connection must be configured as noted below:

NOTE: Contact your system administrator for instructions in reconfiguring the network connection. Reconfiguration of your network connection may require a restart to take effect.

- IP address: 192.168.1.x (where x is 2-253)
- Subnet Mask: 255.255.255.0

Modem port

The Sentry is equipped with a DB9 male Modem serial port for connection to an external modem using the supplied DB9 female to DB25 male serial cable. See *Data Connections* in Appendix C: Technical Specifications for more information on the Modem port.

Chapter 3: Operations

INTERFACES	10
Outlet Naming and Grouping	10
Usernames and Passwords	10
HTML INTERFACE	11
Logging In	11
Outlet Control	12
<i>Individual</i>	12
<i>Group</i>	12
Environmental Monitoring	13
<i>Input Feeds</i>	13
<i>Sensors</i>	13
Configuration	13
<i>System</i>	13
<i>Network</i>	14
<i>Telnet/HTTP</i>	14
<i>Serial Ports</i>	15
<i>Outlets</i>	16
<i>Groups</i>	16
<i>Users</i>	16
<i>FTP</i>	18
<i>Proxy/SNTP</i>	18
<i>SNMP</i>	19
Tools	19
<i>Restart</i>	19
COMMAND LINE INTERFACE	20
Logging In	20
Operations Commands	22
<i>Outlet Control</i>	22
Administration Commands	26
<i>User Administration</i>	26
<i>Group Administration</i>	29
<i>Outlet Administration</i>	30
<i>Environmental Monitor Administration</i>	31
<i>Serial Port Administration</i>	31
<i>System Administration</i>	33
<i>TCP/IP Administration</i>	35
<i>HTTP Administration</i>	36
<i>Telnet Administration</i>	37
<i>FTP Administration</i>	37

Operations

Interfaces

The Sentry has two interfaces: the HTML interface accessed via the HTTP enabled Ethernet connections and the command line for serial and Telnet connections.

Outlet Naming and Grouping

For commands requiring an outlet name, you may specify it in one of two ways: a predefined absolute name or a descriptive name assigned by an administrator.

Absolute names are specified by a period (.) followed by the tower letter, the infeed letter and outlet number.

Example: The absolute name for outlet 8 on the B infeed of tower A is .AB8.

Outlets may also be included in one or more named groups of outlets, enabling you to issue a command that affects all outlets in a named group.

Usernames and Passwords

The Sentry has one predefined administrative user account (username/password: admn/admn) and supports a maximum of 128 defined user accounts

NOTE: For security, Server Technology recommends removal of the predefined administrative user account after a new account with administrative rights has been created.

Only an administrative-level user may perform operations such as creating/removing user accounts and command privileges, changing passwords and displaying outlet and user information. An administrator may also view the status of and control power to all outlets.

The administrator may create additional user accounts and then grant these users the right to view the status of and control power to specific outlets, groups and ports.

Usernames may contain from 1-16 characters and are not case sensitive; spaces are not allowed. Passwords may contain up to 16 characters, and are case sensitive.

HTML Interface

The HTML interface is constructed of three major components: the System Location bar, the User/Navigation bar and the Control Screen. The System Location bar displays the Sentry's location and IP address as well as the current Control Screen title. The User/Navigation bar displays the current user and privilege level and provides access to all HTML pages. And the Control Screen is used to display current data and allow changes to outlet states or system configuration.

The following sections describe each interface section/page and their use.

The screenshot shows the Sentry Remote Power Manager interface. The top navigation bar includes the Sentry logo, 'Remote Power Manager', and 'Server Technology, Inc. www.servertech.com'. Below this, the System Location bar shows 'STI Reno, NV Demo' and '64.42.31.172'. The Control Screen displays 'Outlet Control - Individual' and a table of outlets.

Outlet ID	Outlet Name	Outlet State	Control State	Control Action
AA1	TowerA_InfeedA_Outlet1	On	Idle On	None
AA2	TowerA_InfeedA_Outlet2	On	Idle On	None
AA3	TowerA_InfeedA_Outlet3	On	Idle On	None
AA4	TowerA_InfeedA_Outlet4	On	Idle On	None
AA5	TowerA_InfeedA_Outlet5	On	Idle On	None
AA6	TowerA_InfeedA_Outlet6	On	Idle On	None
AA7	TowerA_InfeedA_Outlet7	On	Idle On	None
AA8	TowerA_InfeedA_Outlet8	On	Idle On	None

Figure 3.1 Example HTML page

Logging In

Logging in through HTML requires directing the HTML client to the configured IP address of the unit.

To log in by HTML:

1. In the login window, enter a valid username and password and press **OK**.

If you enter an invalid username or password, you will be prompted again.

You are given three attempts to enter a valid username and password combination. If all three fail, the session ends and a protected page will be displayed.

Outlet Control

The Outlet Control section offers access to the Individual and Group outlet control pages. From the Individual and Group pages, the user can review and manipulate power control functions for all outlets and groups assigned to the current user. Both pages include the outlets absolute and descriptive names, the Outlet Status reported to the Sentry by the outlet, the current Control State being applied by the Sentry and the outlet load in amperes.

Available outlet and group power states may be set to on, off or reboot; the reboot operation turns the outlet(s) off, delays for a period of 15 seconds and then turns the outlet(s) on.

Individual

The Individual outlet control page displays all outlets assigned to the current user. The user may apply on, off or reboot actions to individual, multiple or all accessible outlets.

To apply actions to individual or multiple outlets:

In the Individual Outlet Control section, select the desired action from the Control Action drop-down menu for each individual outlet to be changed and press **Apply**.

To apply an action to all outlets:

In the Global Control section, select the desired action from the Control Action drop-down menu and press **Apply**.

Group

The Group outlet control page displays all groups assigned to the current user as well as the outlets for each group.

To select a group:

Select the group name from the drop-down menu and press **Select**. The page will refresh to display all outlets associated to the selected group name.

To apply an action to a group:

Select the desired action from the drop-down menu and press **Apply**.

Outlet State/Control State Field Values

Outlet State	Control State	Description
On	On	Outlet is on
Off	Off	Outlet is off
Off	Pend On	Outlet is off and about to turn on in response to a sequence timer
Off	Reboot	Outlet is off and a Reboot action has been initiated
On	Idle On	A restart has occurred – Last Control State has been maintained
Off	Idle Off	A restart has occurred – Last Control State has been maintained
On	Wake On	A power-loss has occurred – Wakeup State has been applied
Off	Wake Off	A power-loss has occurred – Wakeup State has been applied
On/Wait	Off	Outlet state in transition – Requery of outlet status required
Off/Wait	On	Outlet state in transition – Requery of outlet status required
On/Error	varies	Error State – Outlet should be off but current is sensed at the outlet
Off/Error	varies	Error State – Outlet should be on but no current is sensed at the outlet
No Comm	varies	Communication to the outlet has been lost*

* Control State will be applied when communication is re-established

Environmental Monitoring

The Environmental Monitoring section offers access to the Input Feed and Sensors pages. This section is available to administrative level users and users with Environmental Monitoring view rights.

Input Feeds

The Input Feeds page displays the unit(s) absolute and descriptive name and the Input Status reported to the Sentry by the input at the time the page was loaded. This page will refresh automatically every 10 seconds.

Sensors

The Sensors page displays:

- Temperature/humidity sensor's absolute and descriptive names
- Temperature/humidity sensor readings in degrees Celsius and percent relative humidity

Configuration

The Configuration section offers access to all unit configuration options including Network, Telnet/HTTP, Serial Ports, Outlets, Groups, Users, FTP, Proxy/SNTP and SNMP. This section is available to administrative level users only.

System

The System configuration page is used for reference of system information such as Ethernet NIC Serial Number, Ethernet MAC address and system firmware and hardware revisions as well as assignment and maintenance of the system location and tower descriptive names.

For description names, up to 24 alphanumeric and other typeable characters (ASCII 33 to 126 decimal – spaces and colon characters are not allowed) are allowed.

NOTE: Spaces may be used for the location description only.

Creating a descriptive system location name:

Enter a descriptive name and press **Apply**.

Creating a descriptive unit name:

Click on the **Tower Names** link.

On the subsequent Tower Names page, enter a descriptive name and press **Apply**.

Creating a descriptive input feed name:

Click on the **Input Feed Names** link.

On the subsequent Input Feed Names page, enter a descriptive name and press **Apply**.

Creating a descriptive outlet name:

Click on the **Outlet Names** link which will open the Outlets configuration page. See Outlets on page 16 for additional information on creating descriptive outlet names.

Creating a descriptive Pass-Thru port name:

Click on the **Serial Port Names** link which will open the Serial Ports configuration page. See Serial Ports on page 15 for additional information on creating descriptive Pass-Thru port names.

Creating a descriptive Environmental Monitor name:

Click on the **Environmental Monitor Names** link.

On the subsequent Environmental Monitor Names page, enter a descriptive name and press **Apply**.

Creating descriptive sensor names:

Click on the **Sensor Names** link.

On the subsequent Sensor Names page, enter a descriptive name and press **Apply**.

Network

The Network configuration page is used for maintenance of the network interface. From this page an administrator may configure the IP address, subnet mask and gateway address as well as view the link status, speed and duplex value.

The Sentry is configured with the following network defaults to allow unit configuration out-of-the-box through either Telnet or HTML:

- IP address: 192.168.1.254
- Subnet Mask: 255.255.255.0
- Gateway: 192.168.1.1

The initial local PC network connection must be configured as noted below:

NOTE: Contact your system administrator for instructions in reconfiguring the network connection. Reconfiguration of your network connection may require a restart to take effect.

- IP address: 192.168.1.x (where x is 2-253)
- Subnet Mask: 255.255.255.0

NOTE: The unit must be restarted after network configuration changes. See *Performing a warm boot:* on page 19.

Setting the IP address, subnet mask or gateway:

In the appropriate field, enter the IP address, subnet mask or gateway address and press **Apply**.

Telnet/HTTP

The Telnet/HTTP configuration page used to enable or disable Telnet and HTTP support, configure the port number that the Telnet or HTTP server watches and responds to and selection of the method of authentication used.

Enabling or disabling Telnet or HTTP support:

Select **Enabled** or **Disabled** from the appropriate Server drop-down menu and press **Apply**.

Changing the Telnet or HTTP server port number:

In the appropriate Port field, enter the port number and press **Apply**.

Setting the HTTP authentication method:

The Sentry HTTP server supports two authentication methods for security and validation of the username-password – Basic and MD5 digest.

The Basic method utilizes Base64 encoding to encode and deliver the username-password over the network to the HTTP server for decoding and authentication. This basic method is supported by all web browsers and offers a minimum level of security.

NOTE: The Base64 algorithm is widely-known and susceptible to packet-sniffer attack for acquisition of the encoded username-password string.

The MD5 digest method provides stronger protection utilizing one-way encoded hash numbers, never placing the username-password on the network. Instead, the sending browser creates a challenge code based on the hash algorithm, provided username-password and unique items such as the device IP address and timestamp, which is compared against the HTTP server internal user database of valid challenge codes. The MD5 digest method offers a higher level of security than the Basic method but at present is not supported by all browsers.

NOTE: MD5 is known to be fully supported by Internet Explorer 5.0+

Select **Basic** or **MD5** from the Authentication drop-down menu and press **Apply**.

Serial Ports

The Serial Ports configuration page is used for maintenance of all serial/Pass-Thru ports.

NOTE: Pass-Thru connections may only be initiated from the command line interface via a direct serial or Telnet session.

Setting the data-rate for all serial/Pass-Thru ports:

Select the serial/Pass-Thru port data-rate from the drop-down menu and press **Apply**.

Creating a descriptive Pass-Thru port name:

Click on the **Edit** link in the Action column next to the port to be configured.

On the subsequent Serial Port Edit page, enter the descriptive name. Up to 24 alphanumeric and other typeable characters (ASCII 33 to 126 decimal, spaces and colon characters are not allowed) are allowed. Press **Apply**.

NOTE: Port names '1' thru '64', 'CONSOLE' and 'MODEM' are reserved system names and may not be used.

Enabling or disabling serial/Pass-Thru port active signal checking:

Click on the **Edit** link in the Action column next to the port to be configured.

On the subsequent Serial Port Edit page, select **On** or **Off** from the DSR Check drop-down menu and press **Apply**.

Enabling or disabling modem initialization strings:

By default, the Sentry assumes an external modem is attached to the Modem port and sends initialization strings to that modem as necessary. The XLS series sends the initialization strings under the following conditions:

- System start – DSR is high and DCD is low
- Normal operations – If DSR transitions from low to high and DCD is low
- Normal operations – After a session initiated from the Modem port ends
- Normal operations – After a Pass-Thru connection to the Modem port is disconnected

Click on the **Edit** link in the Modem port Action column.

On the subsequent Serial Port Edit page, select **On** or **Off** from the Modem Initializations drop-down menu and press **Apply**.

Editing modem initialization strings:

Click on the **Edit** link in the Modem port Action column.

On the subsequent Serial Port Edit page, enter the initialization string in the appropriate field and press **Apply**.

The Init1 and Init2 strings may be up to 48 characters. The Attention and Hang-up strings may be up to 16 characters.

Predefined Modem Initialization Strings

String Type	String	Description
Init 1	AT	Gets modem attention
Init 2	AT E0 Q1 S0=1 S2=64 S12=50 &C1 &D2	Initializes default settings required
Attention	@@@	Switches the modem to command mode
Hang-up	ATH	Forces a hang-up of an active connection

NOTE: Sentry Remote Power Managers do NOT support *variable data-rate mode* modems. The modem operating mode must be set to *fixed data-rate mode* to avoid the data-rate being changed after initialization.

The modem manual must be referred to as the command(s) required to set the configuration to *fixed data-rate mode* vary significantly from manufacturer to manufacturer. The modem should be configured directly from a PC using a terminal program and the command &W be used to save the new configuration to memory and set it to default.

Outlets

The Outlets configuration page is used for assignment and/or editing of outlet descriptive names and wakeup states.

Editing the outlet descriptive name:

Click on the **Edit** link in the Action column next to the outlet to be configured.

On the subsequent Outlet Edit page, enter the descriptive name. Up to 24 alphanumeric and other typeable characters (ASCII 33 to 126 decimal, spaces and colon characters are not allowed) are allowed. Press **Apply**.

Changing the outlet wakeup state:

Click on the **Edit** link in the Action column next to the outlet to be configured.

On the subsequent Outlet Edit page, select **On** or **Off** from the Wakeup State drop-down menu and press **Apply**.

Groups

The Groups configuration page is used for creation and deletion of group and assignment of outlets to groups.

Creating a group:

Enter a descriptive group name in the Group Name field. Up to 24 alphanumeric and other typeable characters (ASCII 33 to 126 decimal, spaces and colon characters are not allowed) are allowed. Press **Apply**.

Removing a group:

Click on the **Remove** link in the Action column for the group to be removed and press **Yes** on the subsequent confirmation window.

Adding and Deleting outlets from a group:

Press the **Edit** link in the Action column for the associated group.

On the subsequent Group Edit page, select or deselect outlets to be included in that group. Press **Apply**.

Users

The Users configuration page is used for creation and removal of usernames, assignment of accessible outlets and group, assignment of privilege levels and the changing of user passwords.

Creating a new user:

Enter a user name in the Username field. Up to 24 alphanumeric and other typeable characters (ASCII 33 to 126 decimal, spaces and colon characters are not allowed) are allowed.

Enter a password for the new user and verify in the Password and Verify Password fields. For security, password characters are not displayed. Press **Apply**.

Removing a user:

Click on the **Remove** link in the Action column for the user to be removed and press **Yes** on the subsequent confirmation window.

Changing a user password:

Click on the **Edit** link in the Action column for the associated user.

On the subsequent User Edit page, enter a password and verify the new password for the new user in the Password and Verify Password fields. For security, password characters are not displayed. Press **Apply**.

Changing a user's access privilege level:

The Sentry has four defined access privilege levels; Admin, User, On-Only and View-Only:

- **Admin:** Full-access for all configuration, control (On, Off, Reboot), status and Pass-Thru.
- **User:** Partial-access for control (On, Off, Reboot), status and Pass-Thru of assigned outlets, groups and serial/Pass-Thru ports.
- **On-Only:** Partial-access for control (On), status and Pass-Thru of assigned outlets, groups and serial/Pass-Thru ports.
- **View-Only:** Partial-access for status and Pass-Thru of assigned outlets, groups and serial/Pass-Thru ports.

The administrator may also grant administrative privileges to other user accounts allowing the Sentry to have more than one administrative-level user.

NOTE: You cannot remove administrative privileges from the Admin user unless another user has already been given administrative access level privileges created.

Click on the **Edit** link in the Action column for the associated user.

On the subsequent User Edit page, select **Admin**, **User**, **On-only** or **View-only** from the Access Level drop-down menu and press **Apply**.

Granting or removing Environmental Monitoring viewing privileges:

Click on the **Edit** link in the Action column for the associated user.

On the subsequent User Edit page, select **Yes** or **No** from the Environmental Monitoring drop-down menu and press **Apply**.

NOTE: This also grants or removes viewing privileges for the optional Equipment Cabinet Environmental Manager. See the [Equipment Cabinet Environmental Manager Installation and Operations manual](#) for more information.

Adding and Deleting outlet access:

Click on the **Outlets** link in the Access column for the associated user.

On the subsequent User Outlets page, select or deselect outlets to be accessed by the user and press **Apply**.

Adding and Deleting group access:

Click on the **Groups** link in the Access column for the associated user.

On the subsequent User Groups page, select or deselect group to be accessed by the user and press **Apply**.

Adding and Deleting serial/Pass-Thru port access:

Click on the **Ports** link in the Access column for the associated user.

On the subsequent User Ports page, select or deselect ports to be accessed by the user and press **Apply**.

FTP

The FTP configuration page is used for setup and maintenance of all settings required to perform an FTP firmware upload. See Appendix B: Uploading Firmware for more information on uploading firmware.

Setting the FTP Host IP Address:

Enter the IP address in the Host IP Address field and press **Apply**.

Setting the FTP username:

Enter the FTP server username in the Username field, and press **Apply**.

Setting the FTP password:

Enter the FTP server password in the Password field, and press **Apply**.

Setting the filepath:

Enter the path of the file to be uploaded in the Directory field, and press **Apply**.

Setting the filename for upload:

Enter the filename of the file to be uploaded in the Filename field, and press **Apply**.

Testing the FTP upload configuration:

This test validates that the unit is able to contact and log onto the specified FTP server, download the firmware file and verify that the firmware file is valid for this unit.

Press **Test**.

Proxy/SNTP

The Proxy/SNTP configuration page is used for setup and maintenance of all settings required to enable Secure Proxy support. For more information on Secure Proxy see page Secure Proxy in Chapter 4: Advanced Operations.

Enabling or disabling Secure Proxy support:

Select **Enabled** or **Disabled** from the Server drop-down menu and press **Apply**.

NOTE: Secure Proxy requires the use of the Sentry Secure Agent client. See *Using the Secure Agent* on page 42 for more information on configuring the proxy client.

Changing the Secure Proxy well-known port number:

In the Port field, enter the port number and press **Apply**.

Setting Secure Proxy access level:

Select **Optional** or **Required** from the Secure Access drop-down menu and press **Apply**.

Setting the secret key

The secret key used for encryption of the secure connection.

NOTE: The Sentry Secret Key **MUST** match the client Secure Agent Secret Key.

Press **Secret Key** and on the subsequent Secret Key page, enter and verify the secret key in the Secret Key and Verify Secret Key fields. Press **Apply**.

Setting the SNTP Server Address:

Enter the IP address in the primary and/or secondary address field and press **Apply**.

SNMP

The SNMP configuration page is used for setup and maintenance of all settings required to enable SNMP support as well as access to the trap configuration pages. For additional information on SNMP support and detailed descriptions of available traps, see SNMP on page 44.

NOTE: Traps are generated according to a hierarchical architecture; i.e. if a Tower Status enters a trap condition, only the Tower Status trap is generated. Infeed and Outlet Status traps are suppressed until the Tower Status returns to Normal.

Enabling or disabling SNMP support:

Select **Enabled** or **Disabled** from the drop-down menu and press **Apply**.

Setting the community strings:

Enter the community string in the appropriate field and press **Apply**.
Community strings may be 1 to 24 characters

Setting the trap timer:

Enter a trap timer value in the Error Trap Repeat Time field and press **Apply**.
The Error Trap Repeat Time value may be 1 to 65535 (in seconds).

Setting trap destinations:

Enter an IP address in the appropriate Trap Destination field and press **Apply**.

Enabling or disabling tower traps:

Click on the **Tower Traps** link.

On the subsequent Tower Traps page, select or deselect the desired traps and press **Apply**.

Configuring input feed traps:

Click on the **Input Feed Traps** link.

On the subsequent Input Feed Traps page, select or deselect the desired traps and press **Apply**.

Configuring outlet traps:

Click on the **Outlet Traps** link.

On the subsequent Outlet Traps page, select or deselect the desired traps and press **Apply**.

For Load traps:

1. Enter a maximum load value for the outlet in the High Load Threshold field and press **Apply**.
The High Load Threshold value may be 0 to 255 (in amperes).
2. Enter a minimum load value for the outlet in the Low Load Threshold field and press **Apply**.
The Low Load Threshold value may be 0 to 255 (in amperes).

Tools

The Tools section contains access to rebooting the unit, uploading new firmware as well as resetting the unit to factory defaults. This section is available to administrative level users only.

Restart

Performing a warm boot:

Select the **Restart** from the Action drop-down menu and press **Apply**.

Note: System user/outlet/group configuration or outlet states are NOT changed or reset with this command.

Resetting to factory defaults:

See Appendix A: for more information on resetting a Sentry to factory defaults from the HTML interface.

Uploading new firmware:

See Appendix B: Uploading Firmware for more information on uploading new firmware from the HTML interface.

Command Line Interface

Logging In

Logging in through Telnet requires directing the Telnet client to the configured IP address of the unit.

Logging in through the Console (RS232) port requires the use of a terminal or terminal emulation software configured to support ANSI or VT100 and a supported data rate (300, 1200, 2400, 4800, 9600, 19200, 38400, 57600, or 115200 BPS) - 8 data bits-no parity-one stop bit and Device Ready output signal (DTR or DSR).

To log in by RS-232 or Telnet:

1. Press **Enter**. The following appears, where **x.xx** is the firmware version:

```
Sentry Version x.xx
Username:
```

NOTE: Logging in by Telnet will automatically open a session. It is not necessary to press Enter.

2. At the Username: and Password: prompts, enter a valid username and password. And press **Enter**.

You are given three attempts to enter a valid username and password combination. If all three fail, the session ends.

When you enter a valid username and password, the command prompt (Sentry:) appears. If a location identifier was defined, it will be displayed before the Sentry: prompt. See *Creating a location description* on page 33 for more information.

You may enter commands in any combination of uppercase and lowercase. You must enter all command characters correctly; there are no command abbreviations. There are two types of commands: operations and administration. A user must have administrative privileges to use the administration commands. The following tables list and briefly describe each command.

Operations Command Summary

Command	Description
On	Turns one or more outlets on
Off	Turns one or more outlets off
Reboot	Reboots one or more outlets
Status	Displays the on/off status of one or more outlets
Connect	Connects to a serial/Pass-Thru port
Envmon	Displays the status of the integrated Environmental Monitor
Login	Ends the current session and brings up the Username: prompt
Logout	Ends a session
Quit	Ends a session
List Outlets	Lists all accessible outlets for the current user
List Ports	Lists all accessible serial/Pass-Thru ports for the current user
List Group	Lists all assigned outlets for a group name
List Groups	Lists all accessible groups for the current user

Administrative Command Summary

Add Groupouser	Grants a user access to one or more groups
Add Outlettogroup	Adds an outlet to a group name
Add Outlettouser	Grants a user access to one or all outlets
Add Porttouser	Grants a user access to one or all serial/Pass-Thru ports
Create Group	Adds a group name
Create User	Adds a user account
Delete Groupfromuser	Removes access to one or more groups for a user
Delete Outletfromgroup	Deletes an outlet from a group name
Delete Outletfromuser	Removes access to one or all outlets for a user
Delete Portfromuser	Removes access to one or all serial/Pass-Thru ports

Administrative Command Summary (continued)

List User	Displays all accessible outlets/groups for a user
List Users	Displays privilege levels for all users
Remove Group	Deletes a group name
Remove User	Deletes a user account
Restart	Performs a warm boot
Set Envmon Name	Specifies a descriptive field for the integrated eEnvironmental Monitor
Set Envmon THS Name	Specifies a descriptive field for a temperature-humidity sensor
Set FTP Filename	Specifies the file to be uploaded via FTP
Set FTP Filepath	Specifies the filepath for the file to be uploaded
Set FTP Host	Sets the FTP Host IP address
Set FTP Password	Sets the password for the FTP Host
Set FTP Username	Sets the username for the FTP Host
Set Gateway	Sets the Gateway
Set HTTP Port	Sets the HTTP server port number
Set HTTP Security	Sets the HTTP server authentication method
Set HTTP	Enables or disables HTML support
Set Infeed Name	Specifies a descriptive field for the infeed
Set Iaddress	Sets the Sentry IP address
Set Location	Specifies a descriptive field for the HTML control screen and login banner
Set Modem Inits	Enables or disables Modem port initialization strings
Set Modem	Specifies Modem port initialization strings
Set Outlet Name	Specifies a descriptive field for a device attached to an outlet
Set Outlet Wakeup	Sets the wakeup state for an outlet
Set Subnet Mask	Sets the Subnet Mask
Set Telnet Port	Sets the Telnet server port number
Set Telnet	Enables or disables Telnet access
Set Tower Name	Specifies a descriptive field for the Sentry
Set User Access	Sets the access level for a user
Set User Envmon	Grants or removes privileges to view input and environmental monitoring status
Set User Password	Changes the password for a user
Set Port Dsrchk	Sets the DSR active signal checking for a serial/Pass-Thru port
Set Port Speed	Sets the connection speed for all serial/Pass-Thru ports
Show FTP	Displays FTP configuration information
Show Infeeds	Displays infeed configuration information
Show Network	Display network configuration information
Show Outlets	Displays configuration information for all outlets
Show Ports	Displays serial port configuration information
Show Towers	Displays tower configuration information
Version	Displays the Sentry firmware version

To display the names of commands that you may execute:

At the command prompt, press **Enter**. A list of valid commands for the current user appears.

Operations Commands

Operations commands manage outlet states, provide information about the Sentry environment and control session operations.

NOTE: Users must be granted access to affect any change in outlet state.

Outlet Control

Turning outlets on

The On command turns on one or more outlets. When the command completes, a display indicating all outlets affected and their current states will be displayed.

To turn outlets on:

At the Sentry: prompt, type **on**, followed by an outlet name, and press **Enter**, or

Type **on**, followed by a group name, and press **Enter**, or

Type **on all** and press **Enter**.

Examples

The following command turns the second outlet on, using the outlet 's absolute name:

```
Sentry: on .aa2<Enter>
```

The following command turns on all the outlets in the group named ServerGroup_1:

```
Sentry: on ServerGroup_1<Enter>
```

Turning outlets off

The Off command turns off one or more outlets. When the command completes, a display indicating all outlets affected and their current states will be displayed.

To turn outlets off:

At the Sentry: prompt, type **off**, followed by an outlet name, and press **Enter**, or

Type **off**, followed by a group name, and press **Enter**, or

Type **off all** and press **Enter**

Examples

The following command turns off the outlet named FileServer_1:

```
Sentry: off FileServer_1<Enter>
```

The following command turns off all outlets:

```
Sentry: off all<Enter>
```

Rebooting outlets

The Reboot command reboots one or more outlets. This operation turns the outlet(s) off, delays for a period of 15 seconds and then turns the outlet(s) on. When the command completes, a display indicating all outlets affected and their current states will be displayed.

NOTE: It is necessary to reissue the Status command to verify that the outlets have rebooted after 15 seconds. See *Displaying outlet status* for more information.

To reboot one or more outlets:

At the Sentry: prompt, type **reboot**, followed by an outlet name, and press **Enter**, or

Type **reboot**, followed by a group name, and press **Enter**, or

Type **reboot all** and press **Enter**.

Example

The following command reboots all the outlets in the group named ServerGroup_1:

```
Sentry: reboot ServerGroup_1<Enter>
```

Displaying outlet status

The Status command displays the on/off status of one or more outlets. The command displays the status of only those outlets for which the current username has power control access.

This display includes the outlet absolute and descriptive names, the Outlet State reported to the Sentry by the outlet and the current Control State being applied by the Sentry. If you do not specify any parameter with this command, the status of all accessible outlets is displayed.

For more information on outlet and control state values, see *Outlet Control* on page 12.

To display on/off status of one or more outlets:

At the Sentry: prompt, type **status**, followed by an outlet name, and press **Enter**, or

Type **status**, followed by a group name, and press **Enter**, or

Type **status** and press **Enter**.

Examples

The following command displays the on/off status of the outlet named FileServer_1:

```
Sentry: status FileServer_1<Enter>
      Outlet      Outlet      Outlet      Control
      ID          Name          Status      State
      .AA3        FileServer_1      On          On
```

The following command displays the on/off status of all accessible outlets:

```
Sentry: status<Enter>
      Outlet      Outlet      Outlet      Control      Outlet
      ID          Name          Status      State          Load
      .AA1        DataServer_1      On          On              5.0 Amps
      .AA2        WebServer_1      On          On              2.5 Amps
      .AB1        FileServer_1      On          On              9.5 Amps
      .AB2                          On          On              0.0 Amps
```

The following command displays the on/off status for outlets in the group ServerGroup_1:

```
Sentry: status ServerGroup_1<Enter>
      Group: ServerGroup_1
      Outlet      Outlet      Outlet      Control      Outlet
      ID          Name          Status      State          Load
      .AA1        DataServer_1      On          On              5.0 Amps
      .AA2        WebServer_1      On          On              2.5 Amps
      .AB1        FileServer_1      On          On              9.5 Amps
```

Displaying accessible outlets

The List Outlets command displays accessible outlets for the current user. The display includes the absolute and descriptive name of all outlets assigned to the current user.

To display accessible outlets:

At the Sentry: prompt, type **list outlets** and press **Enter**.

Example

The follow command displays all accessible outlets for the current user:

```
Sentry: list outlets<Enter>
      Outlet      Outlet
      ID          Name
      .AA1        DataServer_1
      .AA2        WebServer_1
```

Displaying accessible groups

The List Groups command displays accessible groups for the current user.

To display accessible groups:

At the Sentry: prompt, type **list groups** and press **Enter**.

Example

The follow command displays all accessible groups for the current user:

```
Sentry: list groups<Enter>
Groups:
  ServerGroup_1
  RouterGroup_1
```

Displaying outlets assigned to a group

The List Group command displays outlets assigned to the specified group name.

To display outlets assigned to a group:

At the Sentry: prompt, type **list group**, followed by the group name and press **Enter**.

Example

The follow command displays the outlets assigned to the group ServerGroup_1:

```
Sentry: list group ServerGroup_1<Enter>
Group: ServerGroup_1
  Outlet  Outlet
  ID      Name
  .AA1    DataServer_1
  .AA2    WebServer_1
  .AB1    FileServer_1
```

Displaying accessible serial/Pass-Thru ports

The List Ports command displays accessible serial/Pass-Thru ports for the current user.

To display accessible serial/Pass-Thru ports:

At the Sentry: prompt, type **list ports** and press **Enter**.

Example

The follow command displays all accessible serial/Pass-Thru ports for the current user:

```
Sentry: list ports<Enter>
Port      Port
ID        Name
Console   Console
Modem     Modem
```

Connecting to a serial device

The Connect command allows Pass-Thru serial connection to devices attached to one of the two standard serial ports (Console, Modem).

To connect to a serial device:

At the Sentry: prompt, type **connect**, followed by the serial/Pass-Thru port name and press **Enter**.

Examples

The follow command connects to the serial device connected to the Modem port:

```
Sentry: connect modem<Enter>
```

To disconnect from a serial device:

Type **!*break** and press **Enter**.

Displaying the status of the Environmental Monitor

The Envmon command displays the status of the integrated Environmental Monitor.

By default, only administrative user accounts are allowed access to the Envmon command. An administrator may use the Set User Envmon command to enable and disable access for other user accounts.

To display the status of the Environmental Monitor:

At the Sentry: prompt, type **envmon** and press **Enter**.

Example

The following command displays the status of the Environmental Monitor.

```
Sentry: envmon<Enter>
Environmental Monitor .A
  Name: Florida_HQ_1                Status: Normal
  Temperature/Humidity Sensors
    ID      Name                    Temperature  Humidity
    .A1     Temp_Humid_Sensor_A1    Not Found   Not Found
    .A2     T/H2_Florida_HQ_1       23.5 Deg. C  22 % RH
```

Starting a new session

The Login command activates the Username: prompt. The current session ends, allowing a user to log in and start a new session under a different username.

To start a new session:

At the Sentry: prompt, type **login** and press **Enter**. The Username: prompt appears.

Ending a session

The Quit or Logout commands ends a session. A session ends automatically when no activity is detected for five minutes, or upon loss of connection.

To end a session:

At the Sentry: prompt, type **quit** and press **Enter**, or

Type **logout** and press **Enter**.

Administration Commands

Administration commands may only be issued by a user with administrative privileges, such as the predefined Admn user or another user who has been granted administrative privileges with the Set User Admnpriv command.

User Administration

Creating a user account

The Create User command creates a user account with the specified username and password. See *Usernames and Passwords* in this chapter for more information.

To create a user account:

At the Sentry: prompt, type **create user**, optionally followed by a 1-16 character username (Spaces are not allowed and usernames are not case sensitive). Press **Enter**.

At the Password: prompt, type a password of up to 16 alphanumeric and other typeable characters (ASCII 32 to 126 decimal). Passwords are case sensitive. Press **Enter**. To specify no password, press **Enter** at the prompt.

At the Verify Password: prompt, retype the password. Press **Enter**. To verify no password, press **Enter** at the prompt.

Examples

The following command creates the user account JaneDoe:

```
Sentry: create user JaneDoe<Enter>
Password: <Enter>
Verify New Password: <Enter>
```

For security, password characters are not displayed.

Removing a user account

The Remove User command removes a user account.

NOTE: You may remove the predefined user account Admn only if another user account has been granted administrative access level privileges using the Set User Access command.

To remove a user account:

At the Sentry: prompt, type **remove user**, optionally followed by a username. Press **Enter**.

Changing a password

The Set User Password command changes a user's password. For security, when you type a password, the characters are not displayed on the screen. See *Usernames and Passwords* for more information.

To change a password:

At the Sentry: prompt, type **set user password**, followed by a username and press **Enter**.

At the Password: prompt, type the new password and press **Enter**. Passwords may contain up to 16 characters, and spaces are not allowed. To specify no password, press **Enter** at the prompt.

At the Verify Password: prompt, retype the new password and press Enter. To verify no password, press **Enter** at the prompt.

Examples

The following command changes the password for the user JohnDoe:

```
Sentry: set user password johndoe<Enter>
Password: <Enter>
Verify Password: <Enter>
```

The following command blanks the password for the user JaneDoe:

```
Sentry: set user password<Enter>
Username: janedoe<Enter>
Password: <Enter>
Verify Password: <Enter>
```

Setting user access level privileges

The Set User Access command sets the access level privileges for a user. The Sentry has four defined access privilege levels; Admin, User, On-Only and View-Only. For more information on user access levels, see *Changing a user's access privilege level*: on page 17.

The administrator may also grant administrative privileges to other user accounts allowing the Sentry to have more than one administrative-level user.

NOTE: You cannot remove administrative privileges from the Admin user unless another user has already been given administrative access level privileges created.

To set the access level privilege for a user:

At the Sentry: prompt, type **set user access**, followed by **admin**, **user**, **ononly** or **viewonly**, optionally followed by a username and press **Enter**.

Examples

The following command sets the user access level for JohnDoe to Admin:

```
Sentry: set user access admin johndoe<Enter>
```

The following command sets the user access level for JaneDoe to User:

```
Sentry: set user access user janedoe<Enter>
```

Granting and removing input status viewing privileges

The Set User Envmon command grants or removes input status viewing privileges to/from a user.

NOTE: This command also grants or removes viewing privileges for the status of the optional Equipment Cabinet Environmental Manager and attached sensors. See the Equipment Cabinet Environmental Manager Installation and Operations manual for more information.

To grant or remove input status viewing privileges for a user:

At the Sentry: prompt, type **set user envmon** followed by **on** or **off**, optionally followed by a username and press **Enter**.

Example

The following command grants input status viewing privileges to the user JohnDoe:

```
Sentry: set user envmon on johndoe<Enter>
```

Displaying the access privilege levels

The List Users command displays all defined users with their access privilege level.

To display user access privilege levels:

At the Sentry: prompt, type **list users** and press **Enter**.

Example

The following command displays all users with their access privilege level:

```
Sentry: list users<Enter>
User          Privilege      Environmental
Name          Level          Monitoring
JANEDOE       User           Allowed
JOHNDOE       Admin          Allowed
JOSEPHDOE     On-only        Allowed
JOEDOE        View-Only      Not Allowed
```

Adding outlet access to a user

The Add OutletToUser command grants a user access to one or all outlets. To grant access for more than one outlet, but not all outlets, you must use multiple Add OutletToUser commands.

To grant outlet access to a user:

At the Sentry: prompt, type **add outlettouser**, optionally followed by an outlet name and a username. Press **Enter**, or

Type **add outlettouser all**, followed by a username and press **Enter**.

Examples

The following commands grant the user JaneDoe access to outlets A1 and Webserver_1:

```
Sentry:add outlettouser .a1 janedoe<Enter>
Sentry:add outlettouser WebServer_1 janedoe<Enter>
```

Deleting outlet access for a user

The Delete OutletFromUser command removes a user's access to one or all outlets. You cannot remove access to any outlet for an administrative level user.

To delete outlet access for a user:

At the Sentry: prompt, type **delete outletfromuser**, optionally followed by an outlet name and a username. Press **Enter**, or

Type **delete outletfromuser all**, followed by a username and press **Enter**.

Adding group access to a user

The Add GroupToUser command grants a user access to a group. To grant access for more than one group, you must use multiple Add GroupToUser commands.

To grant group access to a user:

At the Sentry: prompt, type **add grouptouser**, optionally followed by a group name and a username. Press **Enter**.

Examples

The following commands grants to user JaneDoe access to the groups ServerGroup_1 and ServerGroup_2:

```
Sentry:add grouptouser ServerGroup_1 janedoe<Enter>
Sentry:add grouptouser ServerGroup_2 janedoe<Enter>
```

Deleting group access for a user

The Delete GroupFromUser command removes a user's access to a group. You cannot remove access to any group for an administrative level user.

To delete group access for a user:

At the Sentry: prompt, type **delete groupfromuser**, optionally followed by a group name and a username. Press **Enter**.

Adding serial/Pass-Thru port access to a user

The Add PortToUser command grants a user access to a serial/Pass-Thru port. To grant access for more than one port, you must use multiple Add PortToUser commands.

To grant serial/Pass-Thru port access to a user:

At the Sentry: prompt, type **add porttouser**, optionally followed by a Port name and a username. Press **Enter**.

Examples

The following commands grants to user JaneDoe access to the Modem port:

```
Sentry:add porttouser modem janedoe<Enter>
```


Deleting serial/Pass-Thru port access for a user

The Delete PortFromUser command removes a user's access to a serial/Pass-Thru port. You cannot remove access to any serial/Pass-Thru port for an administrative level user.

To delete serial/Pass-Thru port access for a user:

At the Sentry: prompt, type **delete portfromuser**, optionally followed by a Port name and a username. Press **Enter**.

Displaying user outlet, group and serial/Pass-Thru port access

The List User command displays all accessible outlets, groups and serial/Pass-Thru ports for a user.

To display user outlet, group and serial/Pass-Thru port access:

At the Sentry: prompt, type **list user**, optionally followed by a username. Press **Enter**.

Example

The following command displays information about the user JaneDoe:

```
Sentry: list user janedoe<Enter>
Username: JANEDOE
Outlet   Outlet
ID       Name
.AA1     DataServer_1
.AA2     WebServer_1
Groups:
  ServerGroup_1
  ServerGroup_2
More (Y/es N/o): Y
Ports:
  Port    Port
  ID      Name
  Console Console
  Modem   Modem
```

JaneDoe may access the following outlets, groups and serial ports: outlet A1 which has a descriptive name of DataServer_1, outlet A2 which has a descriptive name of WebServer_1, group ServerGroup_1 group ServerGroup_2, Console serial port and Modem serial port.

Group Administration

Creating a group name

The Create Group command creates a new group name.

To create a group name:

At the Sentry: prompt, type **create group**, optionally followed by a descriptive name of up to 24 alphanumeric and other typeable characters (ASCII 33 to 126 decimal - spaces and colon characters are not allowed. Group names are not case sensitive). Press **Enter**.

Example

The following command creates group name ServerGroup_1:

```
Sentry: create group ServerGroup_1<Enter>
```

Removing a group name

The Remove Group command removes a group name.

To remove a group name:

At the Sentry: prompt, type **remove group**, optionally followed by a username. Press **Enter**.

Example

The following command removes group name ServerGroup_1:

```
Sentry: remove group ServerGroup_1<Enter>
```

Adding an outlet to a group

The Add OutletToGroup command adds an outlet to a group. To add more than one outlet, but not all outlets, you must use multiple Add OutletToGroup commands.

To add an outlet to a group:

At the Sentry: prompt, type **add outlettogroup**, optionally followed by an outlet name and group name. Press **Enter**, or

Type **add outlettogroup**, followed by **all** and the group name. Press **Enter**.

Examples

The following commands uses absolute outlet names to add outlets A1 and A2 to group name ServerGroup_1:

```
Sentry:add outlettogroup .aa1 ServerGroup_1<Enter>
Sentry:add outlettogroup .aa2 ServerGroup_1<Enter>
```

The following commands use the outlets' descriptive names to add outlets DataServer_1 and WebServer_1 to group name ServerGroup_1:

```
Sentry:add outlettogroup DataServer_1 ServerGroup_1<Enter>
Sentry:add outlettogroup WebServer_1 ServerGroup_1<Enter>
```

The following command add all outlets to group name ServerGroup_1:

```
Sentry: add outlettogroup<Enter>
Outletname: all<Enter>
Groupname: ServerGroup_1<Enter>
```

Deleting an outlet access from a group

The Delete OutletFromGroup command deletes an outlet from a group. To delete more than one outlet, but not all outlets, you must use multiple Delete OutletToGroup commands.

To delete an outlet from a group:

At the Sentry: prompt, type **delete outletfromgroup**, optionally followed by an outlet name and a group name. Press **Enter**, or

Type **delete outletfromgroup**, followed by **all** then the group name. Press **Enter**.

Outlet Administration

Creating a descriptive outlet name

The Set Outlet Name command assigns a descriptive name to an outlet. You may use this name in commands that require an outlet name as an alternative to using the outlet's absolute name.

To create an outlet name:

At the Sentry: prompt, type **set outlet name**, followed by the absolute outlet name and a descriptive name of up to 24 alphanumeric and other typeable characters (ASCII 33 to 126 decimal - spaces and colon characters are not allowed). Outlet names are not case sensitive. Press **Enter**.

Example

The following command adds the descriptive name DataServer_1 to outlet .a1:

```
Sentry: set outlet name .a1 DataServer_1<Enter>
```

Setting the outlet wakeup state

The Set Outlet Wakeup command set the default wakeup state for that outlet. In the event of a system-wide power loss, this state will be applied to the outlet when power is restored.

The wakeup state may be set to On or Off. Upon restoration of system power; If set to On, the Sentry will apply power to that outlet. If set to Off, the Sentry will not apply power to that outlet.

To set the wakeup state:

At the Sentry: prompt, type **set outlet wakeup**, followed by **on** or **off** and the outlet name. Press **Enter**.

Example

The following command sets the wakeup state for outlet .a1 to off:

```
Sentry: set outlet wakeup off .a1<Enter>
```

Displaying outlet information

The Show Outlets displays information about all outlets. This information includes:

- Descriptive outlet name, if applicable
- Outlet wakeup state setting

The display begins with the outlets on tower .A. After the information for all outlets have been displayed, you are returned to the command prompt.

To display outlet information:

At the Sentry: prompt, type **show outlets** and press **Enter**.

Example

The following command displays all outlet information:

```
Sentry: show outlets<Enter>
Outlet      Outlet      Wakeup
ID          Name        State
.AA1       DataServer_1  off
.AA2       WebServer_1   on
.AB1       FileServer_1  on
.AB2
```

Environmental Monitor Administration

Creating a descriptive Environmental Monitor name

The Set Envmon Name command assigns a descriptive name to the integrated Environmental Monitor. This descriptive name is displayed when the Evmmon command is issued.

To create an Environmental Monitor name:

At the Sentry: prompt, type **set envmon name**, followed by the absolute Environmental Monitor name, then the descriptive name of up to 24 alphanumeric and other typeable characters (ASCII 33 to 126 decimal – spaces are not allowed). Press **Enter**.

Example

The following command adds the descriptive name Florida_HQ_1 to the Environmental Monitor:

```
Sentry: set envmon name .a Florida_HQ_1<Enter>
```

Creating a descriptive temperature/humidity sensor name

The Set Envmon THS Name command assigns a descriptive name to a temperature/humidity sensor. This descriptive name is displayed when the Evmmon command is issued.

To create an temperature/humidity sensor name:

At the Sentry: prompt, type **set envmon ths name**, followed by the absolute name of the temperature/humidity sensor, then the descriptive name of up to 24 alphanumeric and other typeable characters (ASCII 33 to 126 decimal – spaces are not allowed). Press **Enter**.

Example

The following command adds the descriptive name T/H2_Florida_HQ_1 to the second temperature/humidity sensor:

```
Sentry: set envmon ths name .a2 T/H2_Florida_HQ_1<Enter>
```

Serial Port Administration

Setting the serial ports data-rate

The Set Port Speed command sets the default data-rate for all serial ports. Valid data-rates are 1200, 2400, 4800, 9600, 19200, 38400, 57600 and 115200.

To set the serial data-rate:

At the Sentry: prompt, type **set port speed**, follow by the data-rate and press **Enter**.

Example

The following command sets the serial ports data-rate to 38400 BPS:

```
Sentry: set port speed 38400<Enter>
```

Enabling or disabling active signal checking for serial/Pass-Thru connections

The Set Port Dsrchk command enables or disables active signal checking for serial/Pass-Thru connections to devices attached to any of the available serial ports.

To enable or disable active signal checking for serial connections:

At the Sentry: prompt, type **set port dsrchk**, followed by serial port name, **on** or **off**, and press **Enter**, or Type **set port dsrchk all, on** or **off**, and press **Enter**.

Examples

The following command disables active signal checking for the Modem serial port:

```
Sentry: set port dsrchk modem off<Enter>
```

The following command disables active signal checking for all serial/Pass-Thru ports:

```
Sentry: set port dsrchk all off<Enter>
```

Enabling or disabling modem initialization strings

The Set Modem command is used to enable or disable these initialization strings. For more information on modem initialization strings, see *Enabling or disabling modem initialization strings*: on page 15.

Predefined initializations strings are enabled by default.

To enable or disable the modem initialization strings:

At the Sentry: prompt, type **set modem inits**, followed by **on** or **off**, and press **Enter**.

Example

The following command disables the modem initialization strings for the Modem serial port:

```
Sentry: set modem inits off<Enter>
```

Editing modem initialization strings

The predefined modem initialization strings may be edited by an administrative user. The Init 1 and Init 2 strings may be up to 48 characters each and the Attention and Hang-up strings may be up to 16 characters.

For more information on the predefined initialization strings, see *Enabling or disabling modem initialization strings*: on page 15.

Editing modem initialization strings:

At the Sentry: prompt, type **set modem**, followed by **attn**, **hangup**, **init1**, or **init 2** and the initialization string. Press **Enter**.

Examples

The following command set the Init 2 string to 'AT E0 Q1 S0=3 S2=64 S12=50 &C1 &D2':

```
Sentry: set modem init2 AT E0 Q1 S0=3 S2=64 S12=50 &C1 &D2<Enter>
```

Displaying serial/Pass-Thru port information

The Show Ports command displays information about all serial/Pass-Thru ports. This information includes:

- Serial/Pass-Thru port data rate
- Modem port initialization strings
- DSR signal checking settings

To display serial port information:

At the Sentry: prompt, type **show ports** and press **Enter**.

Example

The following command displays all serial/Pass-Thru port information:

```
Sentry: show ports<Enter>
Serial Port Configuration
  ALL Ports:
    Baud Rate: 38400
  Console Port:
    DSR Check: ON
  Modem Port:
    DSR Check: ON
  Initializations: ON
    Init String 1:  AT
    Init String 2:  AT E0 Q1 S0=1 S2=64 S12=50 &C1 &D2
    Attention String: @@@
    Hang-Up String:  ATH
```

System Administration

Creating a location description

The Set Location command specifies text that appears in the HTML control screen's Location field. The text is also appended to a Welcome to banner that appears when a user successfully logs in serially or through a Telnet session.

If you do not issue this command, or if you issue this command without specifying any text, the control screen's Location field will be blank and no Welcome to banner will be displayed.

To create a location description and login banner:

At the Sentry: prompt, type **set location**, followed by a descriptive name of up to 24 alphanumeric and other typeable characters (ASCII 32 to 126 decimal - spaces are allowed). Press **Enter**.

Omitting any characters after typing 'set location' deletes any previously specified text.

Examples

The following command specifies Florida HQ as the descriptive location for the control screen and the login banner:

```
Sentry: set location Florida HQ<Enter>
```

The following command deletes any previously-specified location description:

```
Sentry: set location<Enter>
```

In this case, the control screen's Location field will be blank, and no welcome banner will be displayed after a successful login.

Creating a descriptive tower name

The Set Tower Name command assigns a descriptive name to a tower.

To create a tower name:

At the Sentry: prompt, type **set tower name**, followed by the absolute tower name, then the descriptive name of up to 24 alphanumeric and other typeable characters (ASCII 33 to 126 decimal - spaces are not allowed). Press **Enter**.

Examples

The following command adds the descriptive name Florida_HQ_1 to tower .a:

```
Sentry: set tower name .a Florida_HQ_1<Enter>
```

Displaying tower information

The Show Towers command displays information about all towers. This information includes the absolute and descriptive tower names.

To display tower information:

At the Sentry: prompt, type **show towers** and press **Enter**.

Example

```
Sentry: show towers<Enter>
Tower   Tower
ID      Name
.A      Florida_HQ_1
```

Creating a descriptive infeed name

The Set Infeed Name command assigns a descriptive name to an infeed. This descriptive name is displayed when the Show Traps command is issued. See *Displaying trap configuration information* on page 51 for more information on the Show Traps command.

To create a infeed name:

At the Sentry: prompt, type **set infeed name**, followed by the absolute infeed name, then the descriptive name of up to 24 alphanumeric and other typeable characters (ASCII 33 to 126 decimal - spaces are not allowed). Press **Enter**.

Examples

The following command adds the descriptive name HQ_1_Infeed_A to the first infeed on the first tower:

```
Sentry: set infeed name .aa HQ_1_Infeed_A<Enter>
```

The following command adds the descriptive name HQ_1_Infeed_B to second infeed on the first tower:

```
Sentry: set infeed name .ab HQ_2_Infeed_B<Enter>
```

Displaying Infeed information

The Show Infeeds command displays information about all infeeds. This information includes the absolute and descriptive infeed names.

To display tower information:

At the Sentry: prompt, type **show infeeds** and press **Enter**.

Example

```
Sentry: show infeeds<Enter>
Input   Input
Feed ID Feed Name
.AA     HQ_1_Infeed_A
.AB     HQ_1_Infeed_B
```

Displaying the Sentry firmware version

The Version command displays the Sentry firmware version.

To display the firmware version:

At the Sentry: prompt, type **version** and press **Enter**.

Performing a warm boot

The Restart command performs a warm boot.

NOTE: System user/outlet/group configuration or outlet states are NOT changed or reset with this command.

To perform a warm boot:

At the Sentry: prompt, type **restart** and press **Enter**.

TCP/IP Administration

NOTE: A restart is required after setting or changing ANY TCP/IP configurations. See *Performing a warm boot* on page 35 for more information.

Setting the IP address

The Set Ipaddress command sets the TCP/IP address of the network interface controller.

To set the IP address:

At the Sentry: prompt, type **set ipaddress**, followed by the IP address and press **Enter**.

Example

The following command sets the IP address to 12.34.56.78:

```
Sentry: set ipaddress 12.34.56.78<Enter>
```

Setting the subnet mask

The Set Subnet command sets the subnet mask for the network the Sentry will be attached to.

To set the subnet mask:

At the Sentry: prompt, type **set subnet**, followed by the subnet mask and press **Enter**.

Example

The following command sets the subnet mask to 255.0.0.0

```
Sentry: set subnet 255.0.0.0<Enter>
```

Setting the gateway

The Set Gateway command sets the IP address of the default gateway the Sentry uses to access external networks.

To set the gateway IP address:

At the Sentry: prompt, type **set gateway**, followed by the gateway IP address and press **Enter**.

Example

The following command set the gateway IP address to 12.34.56.1:

```
Sentry: set gateway 12.34.56.1<Enter>
```

Displaying network configuration information

The Show Network command displays TCP/IP, Telnet, Web, SNMP and Secure Proxy configuration information.

- NIC module serial number, MAC address and hardware revision code
- IP address, subnet mask and gateway
- Enabled-disabled status of Telnet, HTTP, SNMP and Secure Proxy support
- Telnet, HTTP and Secure Proxy port numbers
- HTTP authentication method and Secure Proxy access settings
- Network link status, connection speed and duplex value

See Chapter 4: Advanced Operations on page 39 for more information on SNMP and Secure Proxy

To display network configuration information:

At the Sentry: prompt, type **show network** and press **Enter**.

Example

The following command displays the network configuration information:

```
Sentry: show network<Enter>
Network Configuration
NIC S/N :      1600001
MAC Address:   00-0a-9c-10-00-01
H/W Rev Code:  0
IP Address:    12.34.56.78
Subnet Mask:   255.0.0.0
Gateway:       12.34.56.1
Telnet:        Enabled      Port:   23
HTTP:          Enabled      Port:   80   Security: Basic
SNMP:          Disabled
Proxy:         Disabled     Port: 5555   Access:  Optional
Network Status
Link:          Up
Speed:         100 Mbps
Duplex:        Half
```

HTTP Administration

NOTE: A restart is required after setting or changing ANY Telnet/Web configurations. See *Performing a warm boot* on page 35 for more information.

Enabling and disabling HTTP support

The Set HTTP command is used to enable or disable HTTP support.

To enable or disable HTTP support:

At the Sentry: prompt, type **set http**, followed by **enabled** or **disabled** and press **Enter**.

Changing the HTTP server port

With HTTP support enabled, the HTTP server watches and responds to requests on the default HTTP port number 80. This port number may be changed using the Set HTTP Port command.

To change the HTTP port:

At the Sentry: prompt, type **set http port**, followed by the port number and press **Enter**.

Example

The following changes the HTTP port number to 2048:

```
Sentry: set HTTP port 2048<Enter>
```

Setting the HTTP authentication method

The Set HTTP Security command is used to set the method of authentication. The Sentry HTTP server supports two authentication methods for security and validation of the username-password – Basic and MD5 digest.

For more information on authentication methods, see *Setting the HTTP authentication method:* on page 14.

To set the HTTP authentication method:

At the Sentry: prompt, type **set http security**, followed by **basic** or **md5** and press **Enter**.

Telnet Administration

NOTE: A restart is required after setting or changing ANY Telnet/Web configurations. See *Performing a warm boot* on page 35 for more information.

Enabling and disabling Telnet support

The Set Telnet command is used to enable or disable Telnet support.

To enable or disable Telnet support:

At the Sentry: prompt, type **set telnet**, followed by **enabled** or **disabled** and press **Enter**.

Changing the Telnet port

With Telnet support enabled, the Telnet server watches and responds to requests on the default Telnet port number 23. This port number may be changed using the Set Telnet Port command.

To change the Telnet socket:

At the Sentry: prompt, type **set telnet port**, followed by the port number and press **Enter**.

Example

The following changes the Telnet port number to 7001:

```
Sentry: set telnet port 7001<Enter>
```

FTP Administration

The following commands are used to configure the Sentry for an FTP firmware upload. See Appendix B: Uploading Firmware for more information on initiating a FTP firmware upload.

Setting the FTP Host IP address

The Set FTP Host command sets the FTP host IP address allowing for firmware file uploads.

To set the FTP Host IP address:

At the Sentry: prompt, type **set ftp host**, followed by the Host IP address and press **Enter**.

Example

The following command sets the FTP Host IP address to 12.34.56.99:

```
Sentry: set ftp host 12.34.56.99<Enter>
```

Setting the FTP username

The FTP Username command sets the username as required by the FTP Host.

To set the FTP username:

At the Sentry: prompt, type **set ftp username**, followed by the FTP username and press **Enter**.

Example

The following command sets the FTP username to Guest:

```
Sentry: set ftp username guest<Enter>
```

Setting the FTP Password

The FTP Password command sets the password as required by the FTP Host.

To set the FTP password:

At the Sentry: prompt, type **set ftp password**, followed by the FTP password and press **Enter**.

Example

The following command sets the FTP password to OpenSesame:

```
Sentry: set ftp password OpenSesame<Enter>
```

Setting the filename to be uploaded

The FTP Filename command sets the filename of the firmware file to be uploaded.

To set the FTP filename:

At the Sentry: prompt, type **set ftp filename**, followed by the firmware filename and press **Enter**.

Example

The following command sets the FTP filename to snb_s50a.bin:

```
Sentry: set ftp filename snb_s50a.bin<Enter>
```

Setting the filepath for the file to be uploaded

The FTP Filepath command sets the filepath for the firmware file to be uploaded.

To set the FTP filepath:

At the Sentry: prompt, type **set ftp filepath**, followed by the filepath and press **Enter**.

Example

The following command sets the FTP filepath to ftp://sentry:

```
Sentry: set ftp filepath ftp://sentry<Enter>
```

Displaying FTP configuration information

The Show FTP command displays all FTP configuration information.

- FTP Host IP address
- FTP Host username and password
- Firmware filepath and filename

To display FTP configuration information:

At the Sentry: prompt, type **show ftp** and press **Enter**.

Example

The following command displays the FTP configuration information:

```
Sentry: show ftp<Enter>
FTP Configuration
Host IP Address: 12.34.56.99
Username:       guest
Password:      OpenSesame
Directory:     ftp://sentry
Filename:      snb_s50a.bin
```

Chapter 4: Advanced Operations

SECURE PROXY	40
Enabling and Disabling Secure Proxy support	40
Configuring the SNTTP settings	41
Using the Secure Agent	42
SNMP	44
MIB, OID and Support	44
Enabling and Setting up SNMP Support	44
SNMP Traps	46

Advanced Operations

Secure Proxy

The Secure Proxy security module provides the capability to create secure channels between client PCs and remote Sentry services. These channels are created using symmetric cryptography to provide privacy and authenticity. These services are implemented on clients and servers using services from a Secure Proxy.

With Secure Proxy running on the client and server, non-secure web browser and telnet connections are made secure by the proxy through redirection of all data traffic through a secure tunnel. Secure Proxy is a full-featured security application that protects against data tampering, replay attacks, cut-and-paste attacks, man-in-the-middle attacks, and/or eavesdroppers utilizing DES or 128-bit Blowfish encryption methods.

For additional information on the Proxy port and its role in the Secure Proxy model, please see the Technical Note *Secure Proxy: An Overview* available at the Server Technology website.

Secure Proxy Command Summary

Command	Description
Set proxy access	Sets Secure Proxy access as optional or required
Set proxy port	Sets the Secure Proxy port number
Set proxy secret	Sets the Secure Proxy secret key
Set proxy	Enables/disables Secure Proxy support
Set SNTP	Sets the SNTP server addresses
Show network	Displays network and Secure Proxy configuration information
Show SNTP	Displays SNTP configuration information

Enabling and Disabling Secure Proxy support

By default Secure Proxy support is enable but in order to use Secure Proxy, the following must occur:

- Secure Proxy must be configured on the Sentry.
- The SNTP server addresses must be assigned.
- The Secure Proxy Agent software must be installed and configured on the client PC.

To Enable or disable Secure Proxy support

The Set Proxy command is used to enable or disable Secure Proxy support.

To enable or disable Secure Proxy support:

At the Sentry: prompt, type **set proxy**, followed by **enabled** or **disabled** and press **Enter**.

Changing the Secure Proxy port

With Secure Proxy enabled, the proxy server watches and responds to requests on the default port number 5555. The port number may be changed using the Set Proxy Port command.

To change the Secure Proxy port:

At the Sentry: prompt, type **set proxy port**, followed by the port number and press **Enter**.

Example

The following changes the Secure Proxy port to 6458:

```
Sentry: set proxy port 6458<Enter>
```

Setting the secret key

The Set Proxy Secret command is used to assign the encryption key used for the secure connection.

NOTE: The Sentry Secret Key **MUST** match the client Secure Agent Secret Key.

To set the secret key:

At the Sentry: prompt, type **set proxy secret**, optionally followed by a 1-16 character key (Spaces are not allowed) and press **Enter**.

Example

The following changes the secret key to “Last:Chance”:

```
Sentry: set proxy secret Last:Chance<Enter>
```

Setting Secure Proxy access level

The Set Proxy Access command is used to assign use of Secure Proxy as optional or required. The default access level is set to optional.

- Optional –Both non-secure and Secure Proxy encrypted connections are allowed access.
- Required – ONLY Secure Proxy encrypted connections are allowed access.

To change the access level:

At the Sentry: prompt, type **set proxy access**, followed **optional** or **required**, and press **Enter**.

Example

The following changes the access level to required

```
Sentry: set proxy access required<Enter>
```

Displaying network configuration information

The Show Network command displays TCP/IP, Telnet and Web configuration information. See page 36 for more information.

Configuring the SNTP settings

The use of Secure Proxy requires the use of a network time service to provide a synchronized time reference for both the Sentry and the client connection.

The freeware SNTP client NetTime is available at the Server Technology website.

NOTE: If the difference between the clock on the Sentry and the client is greater than 5 minutes, the connection will fail.

Setting the SNTP server address

The Set SNTP command is used to set the primary and secondary SNTP server addresses.

To set the SNTP server address:

At the Sentry: prompt, type **set sntp**, followed by **primary** or **secondary**, and the SNTP server IP address. Press **Enter**.

Example

The following command set the primary SNTP server address to 204.152.184.72:

```
Sentry: set sntp primary 204.152.184.72<Enter>
```

Displaying SNTP configuration information

The Show SNTP command displays all SNTP configuration information.

To display SNTP configuration information

At the Sentry: prompt, type **show sntp** and press **Enter**.

Example

The following command displays the SNTP configuration information:

```
Sentry: show sntp <Enter>
SNTP Date/Time (GMT): 2003-02-21 21:32:48
SNTP Primary IP Address: 204.152.184.72
SNTP Secondary IP Address: 0.0.0.0
```

Using the Secure Agent

Secure Proxy requires the configuration and use of a client agent on the clients PC. The Sentry Secure Agent Windows™ application is available on the Server Technology website.

Configuring a Location or Power Manager

To add, delete a Location or Power Manager, press 'Configuration' on the Sentry Secure Agent window.

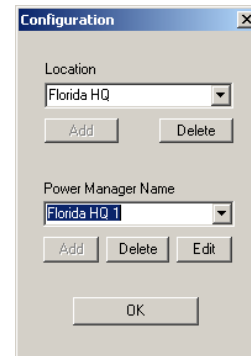
The Configuration window is used to add or delete Locations and Power Managers. The Location pull-down holds all the defined Power Managers locations. The Power Manager pull-down holds the set of all Power Managers that have been configured for a specified location.

To add a Location or Power Manager:

Enter the Location or Power Manager description in the field provided and press 'Add'.

To delete a Location or Power Manager:

Select the Location or Power Manager from the drop-down menu and press 'Delete'.



NOTE: Deleting a Location will delete all Power Manager Name configurations associated with it.

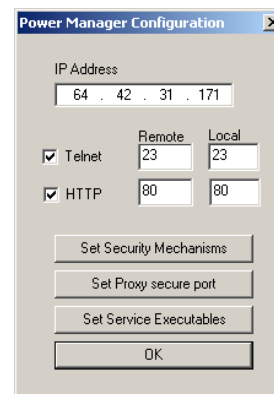
Configuring the Power Manager

Once a new Power Manager has been added, or an existing Power Manager has been selected for editing, the IP address, remote ports and security parameters may be configured. The Power Manager Configuration window allows configuration of the IP address, Remote Port, security mechanisms, secure port and service executables.

To change the IP address, Remote and Local ports for Telnet or HTTP, just change the values in the fields directly, and then press 'OK'.

NOTE:

1. Remote port settings must match the configured port settings on the Power Manager.
2. The Local port settings may need to be changed if the client PC has any server applications binding to the default ports (i.e. web server on port 80).



Enabling and Disabling a Service

The Power Manager Configuration window also allows the operator to enable or disable the services that will connect with the Secure Proxy. There are two services that are used, Telnet and HTTP. The check boxes designate that these services will be active when the Agent is activated.

NOTE: For each activated service, there will be an independent Proxy Client running locally on the client PC.

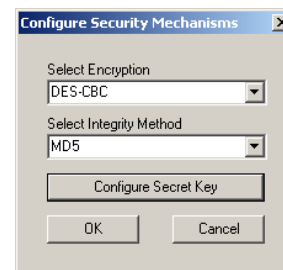
Setting Security Mechanisms

To set the Security Mechanisms between Secure Agent and a Power Manager, press the 'Set Security Mechanisms' button on the Power Manager Configuration window. This opens the Configure Security Mechanisms window.

The Configure Security Mechanisms window has two pull-down menus: an Encryption selection and an Integrity Method selection.

The Encryption selection allows the operator to select DES-CBC or Blowfish-CBC. The DES-CBC method provides 56-bit encryption and the Blowfish-CBC method provides 128-bit encryption. The default is DES-CBC.

The Integrity Method selection allows the operator to select the MD5 or HMAC-MD5 method. The default is MD5.

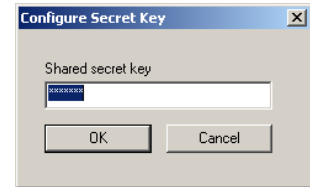


Configuring the Secret Key

The Configure Secret Key window appears when the Configure Secret Key button is pressed on the Configure Security Mechanisms window.

This window has one field and it contains the secret key. Note that this entry is case sensitive. The default value is 'TESTKEY'.

NOTE: The client Secret Key MUST match the Secret Key configured on the Sentry secure server.



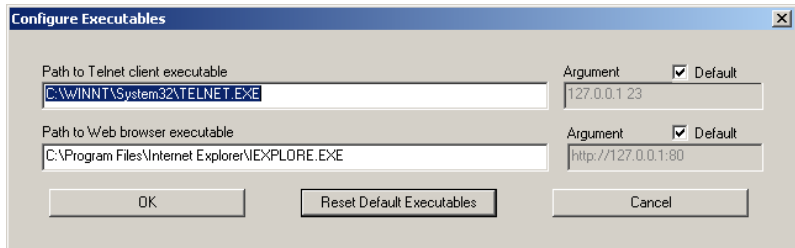
Setting Executable Pathnames

There are two buttons on the Secure Agent window that initiate a Telnet or HTTP client. This feature requires the Secure Agent to have knowledge of the pathnames for these executables. Pressing

the 'Set Service Executables' button on the Power Manager Configuration window opens the Configure Executables window, which allows the operator to alter the pathnames for each executable.

The Configure Executables window has two entry rows, one for Telnet and one for HTTP. The first column is the pathname for the corresponding client executable, and the second is an argument that is passed with the executable to the Secure Proxy server.

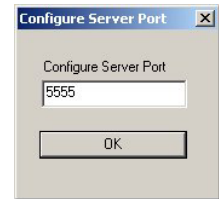
NOTE: The argument must reference a local host address (ex: 127.0.0.1) that the Secure Proxy server monitors and redirects secure traffic through.



Configuring the Secure Agent's secure port.

The Secure Proxy server's secure port is a crucial parameter to successfully communicate over the secure link. The secure port can be modified by pressing the 'Set Server secure port' button on the Power Manager Configuration window, which opens the Configure Server Port window. The default value is 5555.

NOTE: The client secure port MUST match the Secure Proxy port configured on the Sentry secure server.



Starting the Agent

Once a Secure Agent has been configured, it is ready to be used. Of course, the Secure Proxy server on the Sentry must be configured and enabled.

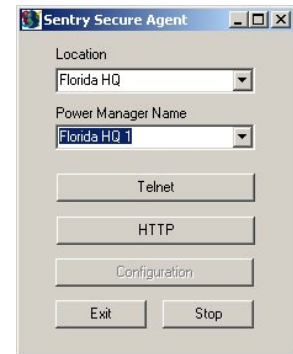
To Start the Agent:

Select the Location and Power Manager name from the pull-down menu.

Upon selection, the buttons for services enabled during configuration will activate.

Starting a Standard Client Application

Once the Agent is up and running, a secure session may be opened by pressing the appropriate button for the desired service.



SNMP

The Sentry family of products supports the Simple Network Management Protocol (SNMP). This allows network management systems to use SNMP requests to retrieve information and control power for the individual outlets.

The Sentry includes an SNMP v1 agent supporting standard MIB I and MIB II objects. A private enterprise MIB extension (Sentry3 MIB) is also supported to provide remote power control.

NOTE: For security, SNMP support is disabled by default.

SNMP Command Summary

Command	Description
Set snmp	Enables or disables SNMP support
Set snmp getcomm	Sets the 'get' community string
Set snmp setcomm	Sets the 'set' community string
Set snmp trapdest1	Sets a destination IP addresses for traps
Set snmp trapdest2	Sets a destination IP addresses for traps
Set snmp traptime	Sets the delay for steady state condition traps
Show snmp	Displays all SNMP configuration information

MIB, OID and Support

The Sentry SNMP MIB and OID are available on the Server Technology website:

<ftp://ftp.servertech.com/pub/SNMP/sentry3>

Technical support is available 8:30AM to 5:00 PM Pacific Time, Monday-Friday.

For SNMP Support, email: mibmaster@servertech.com

Enabling and Setting up SNMP Support

Sentry SNMP support must be enabled and configured for access to Sentry3 MIB objects and generation of all Sentry3 traps.

Enabling/disabling SNMP support

The Sentry SNMP command is used to enable or disable SNMP support.

To enable SNMP support:

At the Sentry: prompt, type **set snmp**, followed by **enabled** or **disabled** and press **Enter**.

NOTE: A restart is required after enabling or disabling SNMP support. See *Performing a warm boot* on page 35 for more information.

Setting trap destinations

The Set SNMP Trapdest1 and Trapdest2 commands are used to set the IP addresses of SNMP management stations receiving all traps. Sentry supports a maximum of two trap destinations; one must be defined to enable trap generation.

To set the trap destination:

At the Sentry: prompt, type **set snmp, trapdest1** or **trapdest2**, the Ipaddress and press **Enter**.

Example

The following sets the trap destination 1 to 64.42.31.208:

```
Sentry: set snmp trapdest1 64.42.31.208<Enter>
```

To reset the trap destination:

At the Sentry: prompt, type **set snmp, trapdest1** or **trapdest2, 0.0.0.0** and press **Enter**.

Setting the trap timer

The Set Traptimer command sets the timer period between repeated error-condition traps. The valid range for the timer period is 1 to 65535 (in seconds). The default value for the timer period is 60 seconds.

To set the trap timer:

At the Sentry: prompt, type **set traptimer**, followed by the timer period and press **Enter**.

Example

The following sets the timer period to 180 seconds:

```
Sentry: set traptimer 180<Enter>
```

Setting the Get/Set community strings

Sentry supports two SNMP community strings that provide varying levels of access to objects defined in the Sentry3 MIB.

Community strings may be 1 to 24 characters.

Setcomm

The Setcomm string provides read-write access to sentry3 MIB objects. The default Setcomm string is "private".

To set the Setcomm community string:

At the Sentry: prompt, type **set snmp setcomm**, followed by the string and press **Enter**.

Getcomm

The Getcomm string provides read-only access to sentry3 MIB objects. The default Getcomm string is "public".

To set the Getcomm community string:

At the Sentry: prompt, type **set snmp getcomm**, followed by the string and press **Enter**.

Setting the Trap community string

The Set SNMP Trapcomm command is used to set the community string that is included with all generated traps. This string must be defined to enable trap generation.

The trap community string may be 1 to 24 characters. The default Trapcomm string is "trap".

To set the Trapcomm community string:

At the Sentry: prompt, type **set snmp trapcomm**, followed by the string and press **Enter**.

Displaying SNMP configuration information

The Show SNMP command displays all SNMP configuration information.

- SNMP support status
- SNMP community strings
- Trap timer value
- Trap destinations

To display SNMP configuration information:

At the Sentry: prompt, type **show snmp** and press **Enter**.

Example

The following command displays the SNMP configuration information:

```
Sentry: show snmp<Enter>
SNMP Configuration
SNMP:                               Enabled
SET Community String:                private
GET Community String:                public
TRAP Community String:               trap
Error Trap Repeat Time (seconds):    180
Trap Destination 1:                  64.42.31.208
Trap Destination 2:                  (undefined)
```

SNMP Traps

The Sentry supports three types of SNMP traps. Traps are enabled at the tower (T), infeed (I), outlet (O), environmental monitor(E), or sensor(S) level.

Trap Summary

Name	Level(s)	Description
Status	T, I, O,E,S	Operational status change
Change	O	Control status change
Load	O	Load out of limit
Temp	S	Temperature is out of range
Humid	S	Relative Humidity is out of range

All traps include the Location of the Sentry as defined with the Set Location command. See *Creating a location description* in Chapter 3: Operations for more information.

Status trap

A Status trap is generated when an error condition occurs on a tower, infeed or outlet. Status traps include the reported Status, the Location of the Sentry, and identifier and name of the affected tower, infeed, outlet, environmental monitor or sensor.

Any Trap Status generates a Status trap and triggers the trap timer. A new trap is generated at the end of every timer period until the Status returns to a non-error status.

Tower Status traps

Status	Error	Description
Normal		Tower is working correctly
NoComm	x	Communication to the tower has been lost

Infeed Status traps

Status	Error	Description
On		Infeed is on
OffError	x	Infeed should be on but no current is sensed at the infeed
NoComm	x	Communication to the infeed has been lost

Outlet Status traps

Status	Error	Description
On		Outlet is on
Off		Outlet is off
OnWait		Outlet Status in transition
OffWait		Outlet Status in transition
OnError	x	Outlet should be off but current is sensed at the outlet
OffError	x	Outlet should be on but no current is sensed at the outlet
NoComm	x	Communication to the outlet has been lost

Environmental Monitor Status traps

Status	Error	Description
Normal		The Environmental Monitor is working correctly
NoComm	x	Communication to the Environmental Monitor has been lost

Temperature/Humidity Sensor Status traps

Status	Error	Description
Found		The sensor has been detected
NotFound		No sensor has been detected
Lost	x	Sensor initially detected but communication to the sensor has been lost
NoComm	x	Communication to the sensor has been lost

NOTE: Traps are generated according to a hierarchical architecture; i.e. if a Tower Status enters a trap condition, only the Tower Status trap is generated. Infeed and Outlet Status traps are suppressed until the Tower Status returns to Normal.

Change trap

The Change trap is generated for all outlet status changes between any on/off conditions. Change traps include the outlet status, Location of the Sentry, and identifier and name of the affected outlet. For descriptions of the outlet status types, please refer to the prior table.

Load Trap

The Load trap is generated whenever the total load on an outlet exceeds a preset threshold. Load traps include the reported load, load status, Location of the Sentry, and identifier and name of the affected outlet.

Any error state generates a Load trap and triggers the trap timer. A new trap is generated at the end of every timer period until the Load returns to a non-error status.

Load traps

Status	Error	Description
Normal		Infeed is on and within preset thresholds
NotOn		Infeed is off
Reading		Non-error state – Load status currently being read
LoadHigh	x	Infeed current load exceeds preset threshold
LoadLow	x	Infeed current load below preset threshold
OverLoad	x	Infeed current load exceeds the measurable range for the infeed
ReadError	x	Unable to read Load status
NoComm	x	Communication to the infeed has been lost

Temp Trap

The Temp trap is generated whenever the temperature on a temperature/humidity sensor is beyond preset thresholds. Temp traps include the reported temperature, temp status, Location of the Sentry, and identifier and name of the affected sensor.

Any error state generates a Temp trap and triggers the trap timer. A new trap is generated at the end of every timer period until the Temp returns to a non-error status.

Temp traps

Status	Error	Description
Normal		The sensor is working correctly and the temperature is within preset thresholds
NotFound		No sensor has been detected
Reading		Temp status currently being read
TempLow	x	Temperature at the sensor below preset low threshold
TempHigh	x	Temperature at the sensor exceeds preset high threshold
ReadError	x	Unable to read Temp status
Lost	x	Sensor initially detected but communication to the sensor has been lost
NoComm	x	Communication to the sensor has been lost

Humidity Trap

The Humidity trap is generated whenever the umidity on a temperature/humidity sensor is beyond preset thresholds. Humidity traps include the reported relative humidity, humidity status, Location of the Sentry, and identifier and name of the affected sensor.

Any error state generates a Humidity trap and triggers the trap timer. A new trap is generated at the end of every timer period until the Humidity returns to a non-error status.

Humidity traps

Status	Error	Description
Normal		The sensor is working correctly and the relative humidity is within preset thresholds
NotFound		No sensor has been detected
Reading		Humidity status currently being read
HumidLow	x	Relative humidity at the sensor below preset low threshold
HumidHigh	x	Relative humidity at the sensor exceeds preset high threshold
ReadError	x	Unable to read Humidity status
Lost	x	Sensor initially detected but communication to the sensor has been lost
NoComm	x	Communication to the sensor has been lost

Configuring Traps

SNMP Trap Command Summary

Command	Description
Set Trap EM Status	Enables or disables the Environmental Monitor Status trap
Set Trap THS Status	Enables or disables a temperature/humidity sensor Status trap
Set Trap THS Temp	Enables or disables a temperature/humidity sensor Temp trap
Set Trap THS Temphigh	Sets a temperature/humidity sensor Temp trap high limit
Set Trap THS Tempow	Sets a temperature/humidity sensor Temp trap low limit
Set Trap THS Humid	Enables or disables a temperature/humidity sensor Humid trap
Set Trap THS Humidhigh	Sets a temperature/humidity sensor Humid trap high limit
Set Trap Tower Status	Enables or disables the Tower Status trap
Set Trap Outlet Change	Enables or disables the Outlet Change trap
Set Trap Outlet Status	Enables or disables the Outlet Status trap
Set Trap Outlet Load	Enables or disables the Outlet Load trap
Set Trap Outlet LoadHigh	Sets the Outlet Load trap high limit
Set Trap Outlet LoadLow	Sets the Outlet Load trap low limit
Show Traps	Displays trap configurations

Enabling or Disabling a Status trap

The Set Trap ... Status command is used to enable or disable Status traps for a Tower, Infeed, Outlet, Environmental Monitor or Sensor.

To Enable or Disable a Status trap:

At the Sentry: prompt, type **set trap (tower, infeed, outlet, em or ths) status**, followed by the tower, infeed, outlet, Environmental Monitor or sensor name, and **on** or **off**. Press **Enter**, or

Type **set trap (tower, infeed, outlet, em or ths) status all**, followed by **on** or **off** and press **Enter**.

Examples

The following command enables the Status trap for the first tower, using the tower's absolute name:

```
Sentry: set trap tower status .a on<Enter>
```

The following command enables the Status trap for the tower named Florida_HQ_1:

```
Sentry: set trap tower status Florida_HQ_1 on<Enter>
```

NOTE: Enabling lower hierarchical traps automatically enables traps of higher hierarchical value: i.e. enabling an Outlet Status trap automatically enables the Infeed and Tower Status traps for that outlet. Conversely, if a Tower Status trap is disabled, all associated Infeed Status & Load and Outlet Status traps will be disabled.

Enabling or Disabling an Outlet Load trap

The Set Trap Outlet Load command is used to enable or disable an Outlet Load trap.

To Enable or Disable a Load trap:

At the Sentry: prompt, type **set trap outlet load**, followed by the Outlet name, and **on** or **off**. Press **Enter**, or Type **set trap outlet load all**, followed by **on** or **off** and press **Enter**.

Examples

The following command enables the Load trap for second Outlet on infeed A, using the Outlet's absolute name:

```
Sentry: set trap outlet load .aa2 on<Enter>
```

The following command disables the Load trap for all Outlets:

```
Sentry: set trap outlet load all off<Enter>
```

NOTE: Enabling lower hierarchical traps automatically enables traps of higher hierarchical value: i.e. enabling an Outlet Load trap automatically enables the Outlet, Infeed and Tower Status traps for that Outlet.

Setting the Outlet Load High limit

The Set Trap Outlet LoadHigh command is used to set the upper load limits for an outlet.

To set the Outlet load high limit:

At the Sentry: prompt, type **set trap outlet loadhigh**, followed by the Outlet name, and a value from 0 to 255 in amperes. Press **Enter**.

Example

The following command sets the Outlet load high limit for the second Outlet on infeed A to 25 amperes, using the Outlet's absolute name:

```
Sentry: set trap outlet loadhigh .aa2 25<Enter>
```

Setting the Outlet Load Low limit

The Set Trap Outlet LoadLow command is used to set the lower load limits for an outlet.

To set the Outlet load low limit:

At the Sentry: prompt, type **set trap outlet loadlow**, followed by the Outlet name, and a value from 0 to 255 in amperes. Press **Enter**.

Example

The following command sets the Outlet load low limit for the second Outlet on infeed A to 5 amperes, using the Outlet's absolute name:

```
Sentry: set trap outlet loadlow .aa2 5<Enter>
```

Enabling or Disabling a Change trap

The Set Trap Outlet Change command is used to enable or disable an Outlet Change trap.

To Enable or Disable a Change trap:

At the Sentry: prompt, type **set trap outlet change**, followed by the outlet name and **on** or **off**. Press **Enter**, or Type **set trap outlet change all**, followed by **on** or **off** and press **Enter**.

Example

The following command enables the Change trap for the first outlet on infeed B, using the outlet's absolute name:

```
Sentry: set trap outlet change .ab1 on<Enter>
```

```
Sentry: set trap adc adclow .a 25<Enter>
```

Enabling or Disabling the Temp trap

The Set Trap THS Temp command is used to enable or disable the Temp trap.

To Enable or Disable the Temp trap:

At the Sentry: prompt, type **set trap ths temp**, followed by the sensor name and **on** or **off**. Press **Enter**.

Example

The following command enables the Temp trap for the first temperature-humidity sensor:

```
Sentry: set trap ths temp .a1 on<Enter>
```

Setting the Temperature sensor threshold limits

The Set Trap THS Templo and Set Trap THS Temphigh commands are used to set the lower and upper threshold limits for the Temperature sensor.

To set the Temperature threshold limits:

At the Sentry: prompt, type **set trap ths, templo** or **temphigh**, followed by the sensor name and a value from 0 to 127 in degrees Celsius. Press **Enter**.

Example

The following command sets the second temperature high threshold limit to 95:

```
Sentry: set trap ths temphigh .a2 95<Enter>
```

Enabling or Disabling the Humid trap

The Set Trap THS Humid command is used to enable or disable the Humid trap.

To Enable or Disable the Humid trap:

At the Sentry: prompt, type **set trap ths humid**, followed by the sensor name and **on** or **off**. Press **Enter**.

Example

The following command enables the Humid trap for the first temperature-humidity sensor:

```
Sentry: set traps ths humid .a1 on<Enter>
```

Setting the Humidity sensor threshold limits

The Set Trap THS Humidlo and Set Trap THS Humidhigh commands are used to set the lower and upper threshold limits for the Humidity sensor.

To set the Humidity threshold limits:

At the Sentry: prompt, type **set trap ths, humidlo** or **humidhigh**, followed by the sensor name and a value from 0 to 100 in percent relative humidity. Press **Enter**.

Example

The following command sets the first humidity sensor low threshold limit to 5:

```
Sentry: set trap ths humidlo .a1 5<Enter>
```

Displaying trap configuration information

The Show Traps command displays information about all traps.

To display trap information:

At the Sentry: prompt, type **show traps** and press **Enter**.

Example

The following command requests trap configuration information:

```
Sentry: show traps <Enter>
Tower trap configuration:
  Tower      Tower      Status
  ID         Name         Trap
  .A         Florida_HQ_1  ON
More (Y/es N/o): y
Input feed trap configuration:
  Input      Input      Status
  Feed ID    Feed Name   Trap
  .AA        HQ_1_Infeed_A  ON
  .AB        HQ_2_Infeed_A  ON
More (Y/es N/o): y
Outlet trap configuration:
  Outlet      Outlet      Status  Change  Load  Low  High
  ID          Name        Trap    Trap    Trap  Thresh Thresh
  .AA1        DataServer_1  ON      OFF     ON     0 A  255 A
  .AA2        WebServer_1   ON      OFF     ON     5 A  25 A
  .AB1        FileServer_1  ON      OFF     ON     0 A  255 A
  .AB2                          ON      OFF     ON     0 A  255 A
More (Y/es N/o): y
Environmental Monitor .A trap configuration:
Name: Florida_HQ_1
Status Trap: ON
Temperature/Humidity Sensor .A1      Temperature/Humidity Sensor .A2
  Name: Temp_Humid_Sensor_A1          Name: T/H2_Florida_HQ_1
  Status Trap: ON                      Status Trap: ON
  Temp Trap: ON                         Temp Trap: ON
  Low: 0 Deg.C                          Low: 0 Deg.C
  High: 127 Deg.C                       High: 95 Deg.C
  Humid Trap: ON                         Humid Trap: ON
  Low: 5 % RH                            Low: 0 % RH
  High: 100 % RH                         High: 100 % RH
```


Chapter 5: Appendices

APPENDIX A: RESETTING TO FACTORY DEFAULTS	54
To reset to factory defaults from the HTML interface	54
To reset to factory defaults from the command line.....	54
To reset to factory defaults using the reset button.....	54
APPENDIX B: UPLOADING FIRMWARE	54
To initiate an FTP upload session from the HTML interface.....	54
To initiate an FTP upload session from the command line	54
APPENDIX C: TECHNICAL SPECIFICATIONS	55
Models.....	55
Power Ratings	55
Physical Specifications.....	55
Data Connections	56
LED Indicators	57
Inlet Connections.....	57
Outlet Connections.....	57
Output Circuit Protection	58
APPENDIX D: WARRANTY, PRODUCT REGISTRATION AND SUPPORT	59
Warranty and Limitation of Liability	59
Product Registration	59
Technical Support	60
Return Merchandise Authorization	60

Appendices

Appendix A: Resetting to Factory Defaults

You may reset the non-volatile RAM that stores all configurable options. This clears all administrator-editable fields and resets all command line configurable options to their default values, including all user accounts.

You may reset the unit to factory defaults from the HTML or command line interface or, by pressing the reset button. You must have administrator-level privileges to issue the command. Using the reset button may be necessary when a forgotten password prevents administrator login. Each of the methods update the current working configuration to the factory defaults.

NOTE: Resetting the unit to factory defaults resets all TCP/IP and Telnet/Web configurations. Reconfiguring of the TCP/IP and Telnet/web settings will be required.

To reset to factory defaults from the HTML interface

On the Restart page in the Tools section of the HTML interface, select **Restart and reset to factory defaults** from the drop-down menu and press **Apply**.

To reset to factory defaults from the command line

At the Sentry: prompt, type **restart factory** and press **Enter**.

To reset to factory defaults using the reset button

Press and hold the reset button between ten and fifteen seconds.

NOTE: If the reset button is depressed and held for more than 15 seconds, the reset will abort.

Appendix B: Uploading Firmware

You may upload new versions of firmware using File Transfer Protocol (FTP). This allows access to new firmware releases for firmware improvements and new features additions.

NOTE: To begin an FTP upload session, you must first configure the FTP Host address, username/password, filename and filepath. For information on configuring the FTP settings required for firmware upload see Chapter 3: Operations.

You may initiate an FTP upload session from the HTML or command line interface. You must have administrator-level privileges to initiate an upload.

To initiate an FTP upload session from the HTML interface

On the Restart page in the Tools section of the HTML interface, select **Restart and upload firmware via FTP** from the drop-down menu and press **Apply**.

Upon issuing this command the unit will restart and upload the firmware file specified with the FTP Filename command from the previously configured FTP Host. See *FTP Administration* in Chapter 3: for more information.

To initiate an FTP upload session from the command line

The Restart FTPLoad command initiates an upload of firmware. Upon issuing this command the unit will restart and upload the firmware file specified with the FTP Filename command from the previously configured FTP Host. See *FTP Administration* in Chapter 3: for more information.

To initiate an FTP firmware upload session:

At the Sentry: prompt, type **restart ftpload** and press **Enter**.

Appendix C: Technical Specifications

Models

Standard Models

Model	Voltage	Inlet	Outlets
4870-XLS-8	-48 VDC	2x 100A NEBS terminal blocks	4x 70A terminal pairs
4805-XLS-16	-48VDC	2x 100A NEBS terminal blocks	16x 10A terminal pairs
4805/35-XLS-12	-48 VDC	2x 100A NEBS terminal blocks	8x 10A terminal pairs, 4x 70A terminal pairs

Failsafe Models

Model	Voltage	Inlet	Outlets
4870-XLSF-8	-48 VDC	2x 100A NEBS terminal blocks	4x 70A terminal pairs
4805-XLSF-16	-48VDC	2x 100A NEBS terminal blocks	16x 10A terminal pairs
4805/35-XLSF-12	-48 VDC	2x 100A NEBS terminal blocks	8x 10A terminal pairs, 4x 70A terminal pairs

NOTE: On Failsafe models, if operating all outputs from one input, total output must NOT exceed 100A

Power Ratings

Model <i>Model</i> Modell	Input Current Ratings ¹ <i>L'indice du courant d'entrée</i> Eingangsstromstärke		Output Current Ratings <i>L'indice du courant de sortie</i> Ausgangsstromstärke			
	Voltage <i>Tension</i> Spannung	Current <i>Courant</i> Strom	Outlet <i>Prise</i> Anschlussstelle	Total <i>Total</i> Insgesamt		
4870-XLS-4	A, B	-48 V DC	2x 100	A 1, A 2	70	100
B 1, B 2				70	100	
4805-XLS-16				A 1, A 2, A 3, A 4, A 5, A 6, A 7, A 8	10	100
B 1, B 2, B 3, B 4, B 5, B 6, B 7, B 8				10	100	
4805/35-XLS-12				A 1, A 2, A 3, A 4	10	100
A 5, A 6				70	100	
B 1, B 2, B 3, B 4				10	100	
B 5, B 6				70	100	
4870-XLSF-4				A, B	-48 V DC	2x 100
B 1, B 2	70	100				
4805-XLSF-16	A 1, A 2, A 3, A 4, A 5, A 6, A 7, A 8	10	100			
B 1, B 2, B 3, B 4, B 5, B 6, B 7, B 8	10	100				
4805/35-XLSF-12	A 1, A 2, A 3, A 4	10	100			
A 5, A 6	70	100				
B 1, B 2, B 3, B 4	10	100				
B 5, B 6	70	100				

NOTE: On XLSF units, if operating all outputs from one input, total output must NOT exceed 100A

Physical Specifications

Model	XLS Series	
Physical Size (H x W x D)	3.5 x 17.0 x 17.0 in.	
Weight	22.8 lbs	
Temperature	Operating	0° to 50° C (32° to 122° F)
	Storage	-40° to 85° C (-40° to 185° F)
Elevation (above MSL)	Operating	0 to 10,000 ft (0 to 3000 m)
	Storage	0 to 50,000 ft (0 to 15 000 m)
Relative Humidity	Operating	10 to 90%, non-condensing
	Storage	10 to 90%, non-condensing
Approvals	cCSAus, TUV-GS, NEBS ¹	

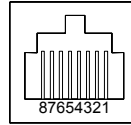
¹ cCSAus - UL 1950, CAN/CSA 22.2 No. 950-95
TUV-GS - EN60950:2000
NEBS - GR-63-Core, GR-1089-Core

Data Connections

RS-232 port

XLS series are equipped standard with an RJ45 DTE RS-232c serial port. This connector may be used for direct local access or from other serial devices such as a terminal server. An RJ45 crossover cable is provided for connection to an RJ45 DCE serial port.

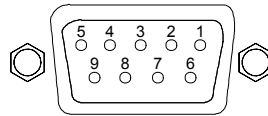
Pin	DTE Signal Name		Input/Output
1	Request to Send	RTS	Output
2	Data Terminal Ready	DTR	Output
3	Transmit Data	TD	Output
4	Signal Ground		
5	Signal Ground		
6	Receive Data	RD	Input
7	Data Set Ready	DSR	Input
8	Clear to Send	CTS	Input



RJ45 to DB9F serial port adapter

Additionally, an RJ45 to DB9F serial port adapter is provided for use in conjunction with the RJ45 crossover cable to connect to a PC DB9M DCE serial port. The adapter pinouts below reflect use of the adapter with the provided RJ45 crossover cable.

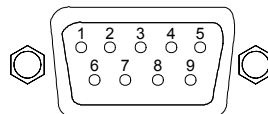
Pin	DCE Signal Name		Input/Output
2	Receive Data	RD	Output
3	Transmit Data	TD	Input
4	Data Terminal Ready	DTR	Input
5	Signal Ground		
6	Data Set Ready	DSR	Output
7	Request to Send	RTS	Input
8	Clear to Send	CTS	Output



Modem Port

XLS series are equipped standard with a DB9-male RS-232C DTE Modem serial port. This connector is typically used to connect to an external modem, but may also be used to connect to any RS-232C device. A 9-pin female to 25-pin male cable is included for connecting the XLS series to an external modem.

Pin	DTE Signal Name		Input/Output
1	Data Carrier Detect	DCD	Input
2	Receive Data	RD	Input
3	Transmit Data	TD	Output
4	Data Terminal Ready	DTR	Output
5	Signal Ground		
6	Data Set Ready	DSR	Input
7	Request to Send	RTS	Output
8	Clear to Send	CTS	Input



Note: To connect to a PC serial port, a null-modem adapter and a female-to-female gender changer are required in addition to the included cable.

LED Indicators

XLS series is equipped with a status LED for each terminal pair. A lit/on LED indicates that power is being supplied to the terminal pair and a darkened/off LED indicates that there is no power at the terminal pair.

Inlet Connections

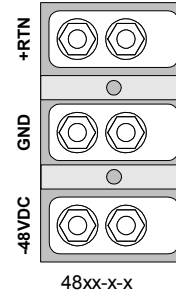
The XLS is equipped with two input blocks, each containing three clearly labeled terminal positions. Connections are made using two-hole copper compression lugs for dual-stud blocks.

WARNING: Reverse polarity will damage the Sentry Remote Power Manager! Verify proper polarity before connecting to a power source!

Two-hole Copper Compression Lugs

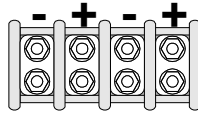
Cable Size(AWG)	Stud Size	Color Code	Thomas&Betts Model	Grainger Stock
#6 str.	¼"	Blue	54205	3LL91
#4 str	¼"	Gray	54206	3LL92
#2 str	¼"	Brown	54207	3LL93
#1 str	¼"	Green	54208	3LL94

Grainger catalog #390 (1999-2000)

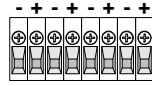


Outlet Connections

The XLS is equipped with four to sixteen terminal outlet pairs each containing clearly labeled terminal positions. Connections are made using two-hole copper compression lugs for dual-stud blocks, and bare stripped wire for high-density screw-down blocks. For the dual stud lugs, please reference the table above.



Dual Stud Terminal



Screw -down Terminal

Output Circuit Protection

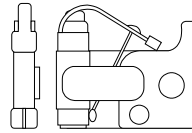
GMT Fuse

4805 XLS units with high-density outlet terminal pairs are equipped with GMT fuses for circuit protection. GMT fuses offer the following features:

- Fast-acting
- Positive visual indication for blown fuse
- Easily replaceable without special tools
- Protective splatter-cap safety cover
- Color-coded current ratings from .5A to 10A for use with a Sentry RPM

GMT Fast-Acting Indicating Fuses

Ampere Rating	Color Code	Bussman Part Number
1	Gray	GMT-1A
2	Orange	GMT-2A
3	Blue	GMT-3A
4	White/Brown	GMT-4A
5	Green	GMT-5A
7½	Black/White	GMT-7½A
10	Red/White	GMT-10A



*CooperBussman product data-sheet #5008.
See data-sheet for complete listing of available GMT fuses.*

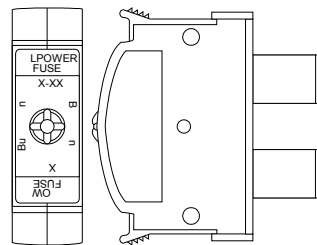
TPC Fuse

4805/35 and 4870 XLS units are equipped with TPC fuses for circuit protection. TPC fuses offer the following features:

- Current-limiting
- 100,000A interrupt rating
- LED indicator for blown fuse
- Easily replaceable without special tools
- Containment of arcs, molten metals and gases during fuse opening
- Color-coded current ratings from 3A to 75A for use with a Sentry RPM

TPC Telpower® Current Limiting Fuses

Ampere Rating	Color Code	Bussman Part Number
25	Yellow	TPC-25
30	Red	TPC-30
40	Purple	TPC-40
50	White	TPC-50
60	Gray	TPC-60
75	Orange	TPC-75



*CooperBussman product data-sheet #5023.
See data-sheet for complete listing of available TPC fuses.*

Warranty and Limitation of Liability

Server Technology, Inc. agrees to repair or replace Products that fail due to a defect within twelve (12) months after the shipment date of each Product unit to Buyer (“Warranty Period”). For purposes of this Agreement the term “defect” shall mean the Product fails to operate or fails to conform to its applicable specifications. Any claim made pursuant to this Agreement shall be asserted or made in writing only by Buyer. Buyer shall comply with Server Technology’s Standard Return Merchandise Authorization (“RMA”) procedure for all warranty claims as set forth in Server Technology’s operation manual.

Buyer must return Products in original packaging and in good condition. This limited warranty does not include labor, transportation, or other expenses to repair or reinstall warranted Products on site or at Buyer’s premises.

Server Technology reserves the right to investigate any warranty claims to promptly resolve the problem or to determine whether such claims are proper. In the event that after repeated efforts Server Technology is unable to repair or replace a defective Product, then Buyer’s exclusive remedy and Server Technology’s entire liability in contract, tort, or otherwise shall be the payment by Server Technology of Buyer’s actual damages after mitigation, but shall not exceed the purchase price actually paid by Buyer for the defective Product.

Server Technology shall have no responsibility or liability for any Product, or part thereof, that (a) has had the Serial Number, Model Number, or other identification markings altered, removed or rendered illegible; (b) has been damaged by or subject to improper installation or operation, misuse, accident, neglect and/or has been used in any way other than in strict compliance with Server Technology’s operation and installation manual; (c) has become defective or inoperative due to its integration or assembly with any equipment or products not supplied by Server Technology; (d) has been repaired, modified or otherwise altered by anyone other than Server Technology and/or has been subject to the opening of any sealed cabinet boxes without Server Technology’s prior written consent. If any warranty claim by Buyer falls within any of the foregoing exceptions, Buyer shall pay Server Technology its then current rates and charges for such services.

THE ABOVE WARRANTY IS IN LIEU OF ALL OTHER WARRANTIES, EXPRESS OR IMPLIED, INCLUDING THOSE OF MERCHANTABILITY AND FITNESS FOR A PARTICULAR PURPOSE, ALL OF WHICH ARE EXPRESSLY DISCLAIMED. SERVER SHALL NOT BE LIABLE FOR ANY CONSEQUENTIAL, INCIDENTAL, SPECIAL, OR EXEMPLARY DAMAGES; EVEN IF IT HAS BEEN ADVISED OF THE POSSIBILITY OF SUCH DAMAGES.

For warranty issues, contact the Product Support Department at the number listed above. All repair and return shipments must be approved by Server and must be accompanied by a RMA (Return Merchandise Authorization) number and dated proof of purchase.

Product Registration

Registration is your key to special offers and services reserved for Registered Users.

- Excellent Technical Support Services
- Special Update and Upgrade Programs
- Warranty Protection
- Extended Warranty Service
- New Product Information

Register your products online today!

www.servertech.com

Technical Support

Server Technology understands that there are often questions when installing and/or using a new product. Free Technical Support is provided from 8:30 AM to 5:00 PM, Monday-Friday, Pacific Time.

Server Technology, Inc.

1040 Sandhill Drive

Reno, Nevada 89521 USA

Tel: 775.284.2000

Fax: 775.284.2065

Web: www.servertech.com

Email: support@servertech.com

Return Merchandise Authorization

If you have a unit that is not functioning properly and is in need of technical assistance or repair:

Submit a request for support by phone at the above number, or via the web at

www.servertech.com/support/support_req.html

Be ready to provide:

Company Name

Contact Name, Phone Number, and Email address

Model or Part Number (from the label on the equipment)

Server Technology Serial Number

Version of code (See Chapter 3)

Description of problem

1. Technical Support will work to diagnose/resolve the problem remotely, if possible. If the problem cannot be resolved, Technical Support will then issue an RMA# for the return/repair of the equipment in question. RMA#'s are valid for 30 days only from the issue date.
2. Shipping charges for the return of the equipment to Server Technology shall be the responsibility of the customer. For warranty repairs, Server Technology shall assume return shipping charges but for non-warranty repairs, the shipping charges shall be billed.
3. The RMA# shall be placed conspicuously on all shipping documentation, associated correspondence, and the shipping container.
4. Equipment must be returned in proper/original packaging to protect the equipment in transit. The customer shall be financially responsible for any damage/destruction of the equipment due to improper packaging.
5. Equipment shall typically be turned around within 48-72 hours of receipt at Server Technology. Equipment under warranty shall be repaired at no cost. Equipment NOT under warranty shall be repaired at the standard labor rate plus parts. Upon diagnosis of the equipment, the customer shall be notified of estimated charges prior to repair.
6. For non-warranty repairs, return of the equipment will be expedited with the inclusion of a Purchase Order or credit card number for incurred charges.



Server Technology, Inc.

Server Technology, Inc.
1040 Sandhill Drive
Reno, NV 89521
USA

toll free +1.800.835.1515
tel +1.775.284.2000
fax +1.775.284.2065

www.servertech.com
sales@servertech.com