

Server Technology PDU Mounting Bracket Catalog

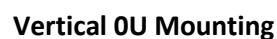
Table of Contents

Vertical Mounting Solutions	3
Horizontal Mounting Solutions	21

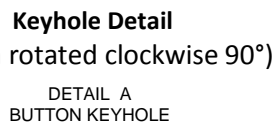
Vertical Mounting Solutions

Note:

** One kit is supplied with each vertical Server Technology Sentry PDU



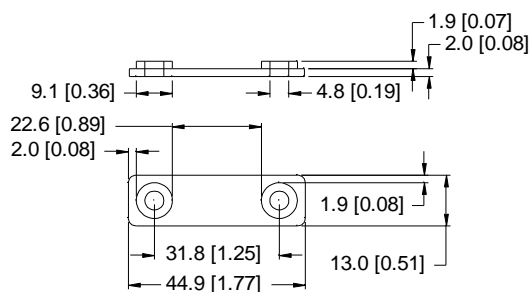
Allow 3/4" clearance at top of enclosure to allow button to mount in key-hole



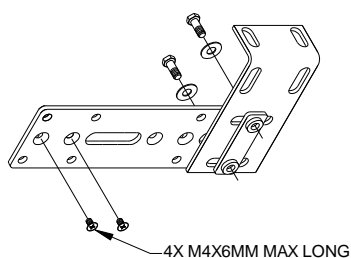
4 | Page

Part Number	Description – Fits most PDUs	
KIT-MBVPT-1B	Mounting bracket kit, vertical, 0U, STI black painted	
Bill-of-Materials		
Part Number	Description	Qty
MB-0005-IPT2-20	Bracket, VPT, L-shaped, black (Rev. E)	2
MB-0005-IPT7-20	Bracket, VPT, removable flange, black (Rev. C)	2
HDW-010-0015-20	M5 nut plate, black (Rev. B)	2
HDW-SPMFM406BB	Screw, Phillips, flat, M4x6mm	4
HDW-SPMHM510BB	Screw, Phillips, hex, M5x10mm	4
HDW-WSM5FBB-1	Washer, flat, M5	4

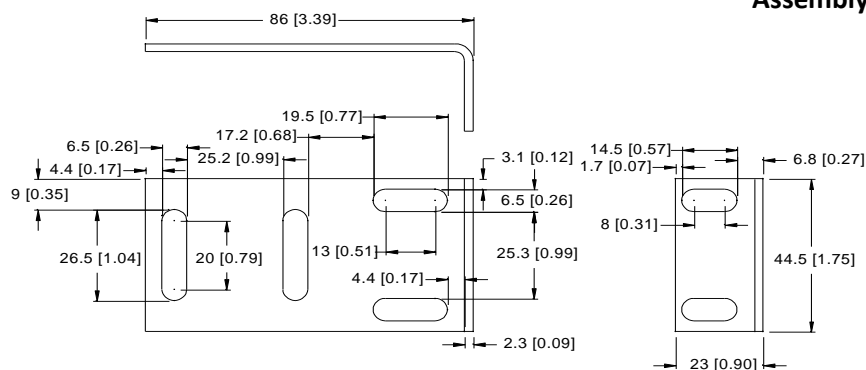
Notes: Beige colored kit available, part number KIT-MBNF2-1



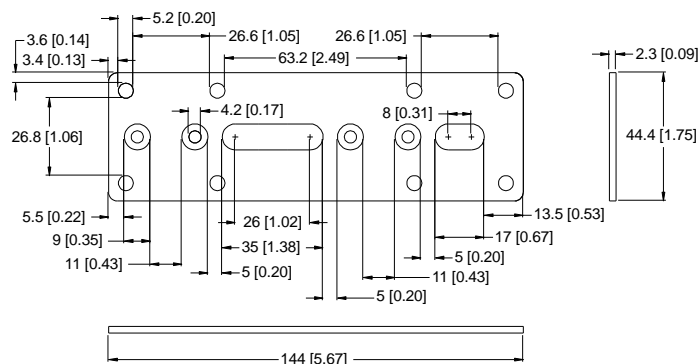
HDW-010-0015-20



Assembly

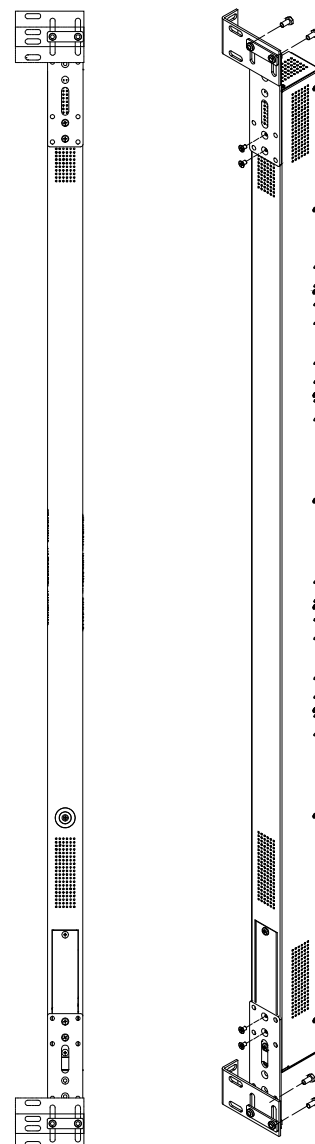


MB-0005-IPT2-20

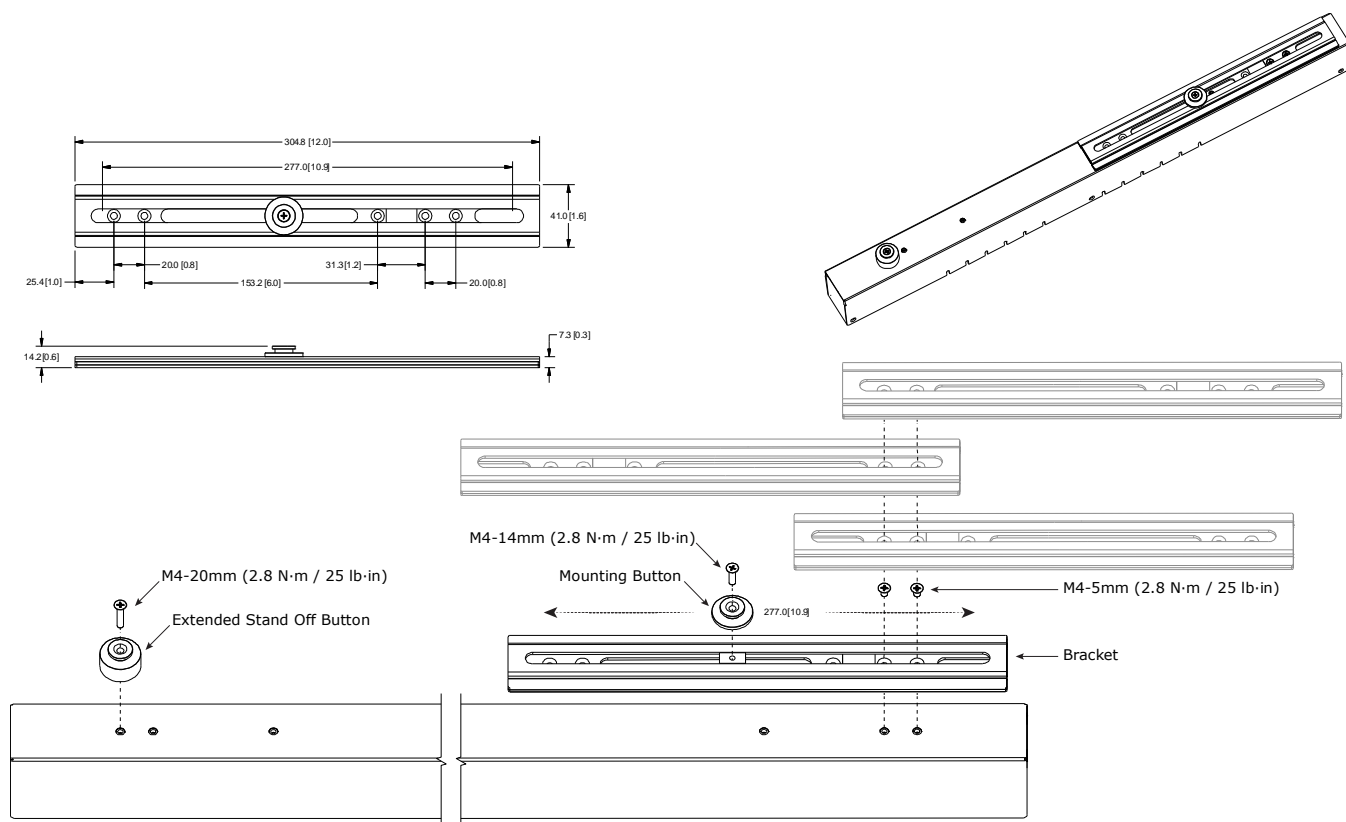


MB-0005-IPT7-20

Dimensions: mm [in.]

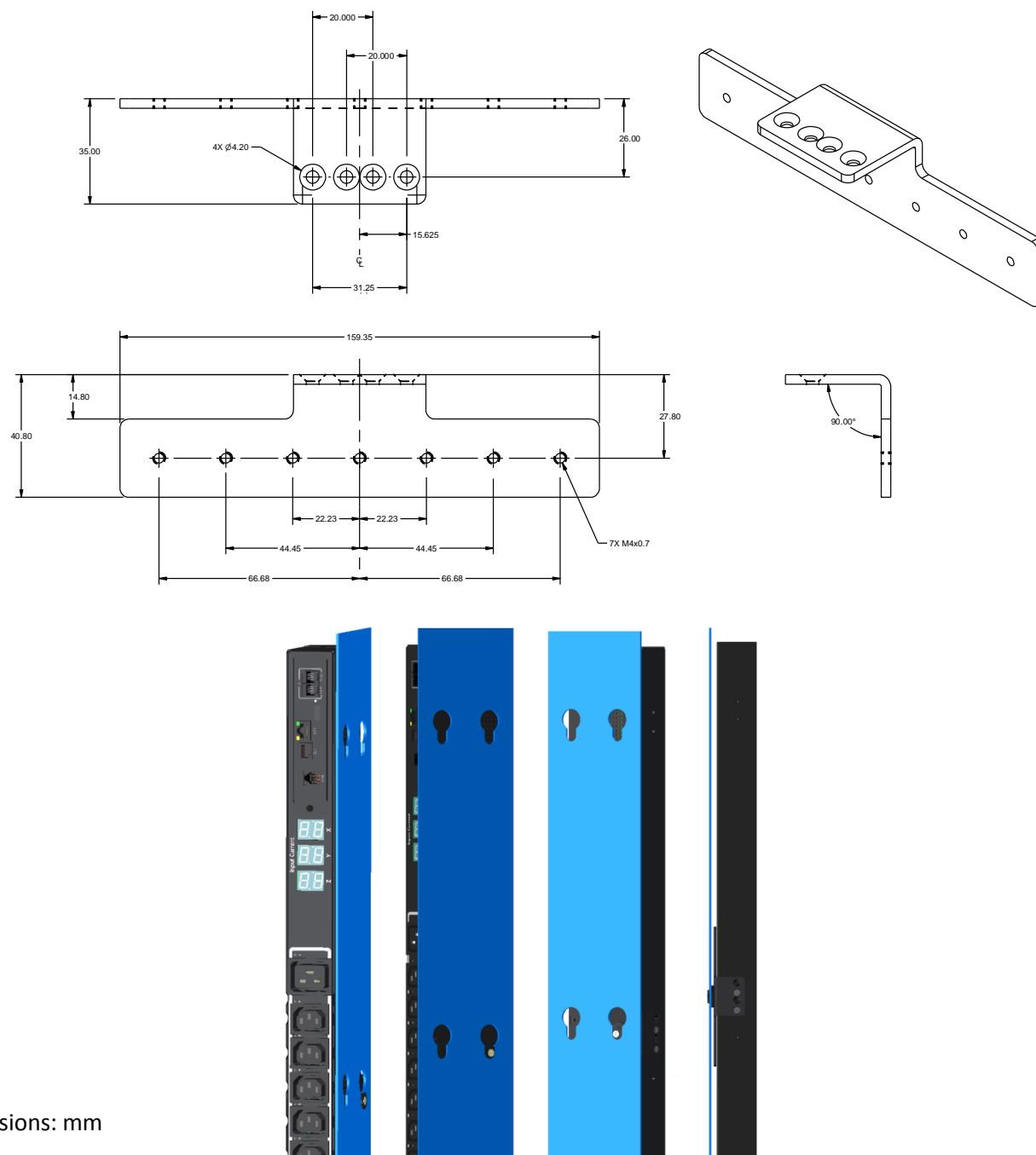


Part Number	Description – Fits most PDUs	
KIT-MB-99	Adjust Button Bracket, Universal Slide	
Bill-of-Materials		
Part Number	Description	Qty
MB-0005-0195-00	Slide bracket	1
HDW-010-0372	Slide button	1
HDW-010-0384	Aluminum standoff button	1
HDW-SPMFM406ZC	Screw, Phillips, Flat, M4x6mm, 90 Deg. Steel Zinc Plated	2
HDW-SPMFM414ZC	Screw, Phillips, Flat, M4x14mm, 90 Deg. Steel Zinc Plated	1
HDW-SPMFM420ZC	Screw, Phillips, Flat, M4x20mm, 90 Deg. Steel Zinc Plated	1



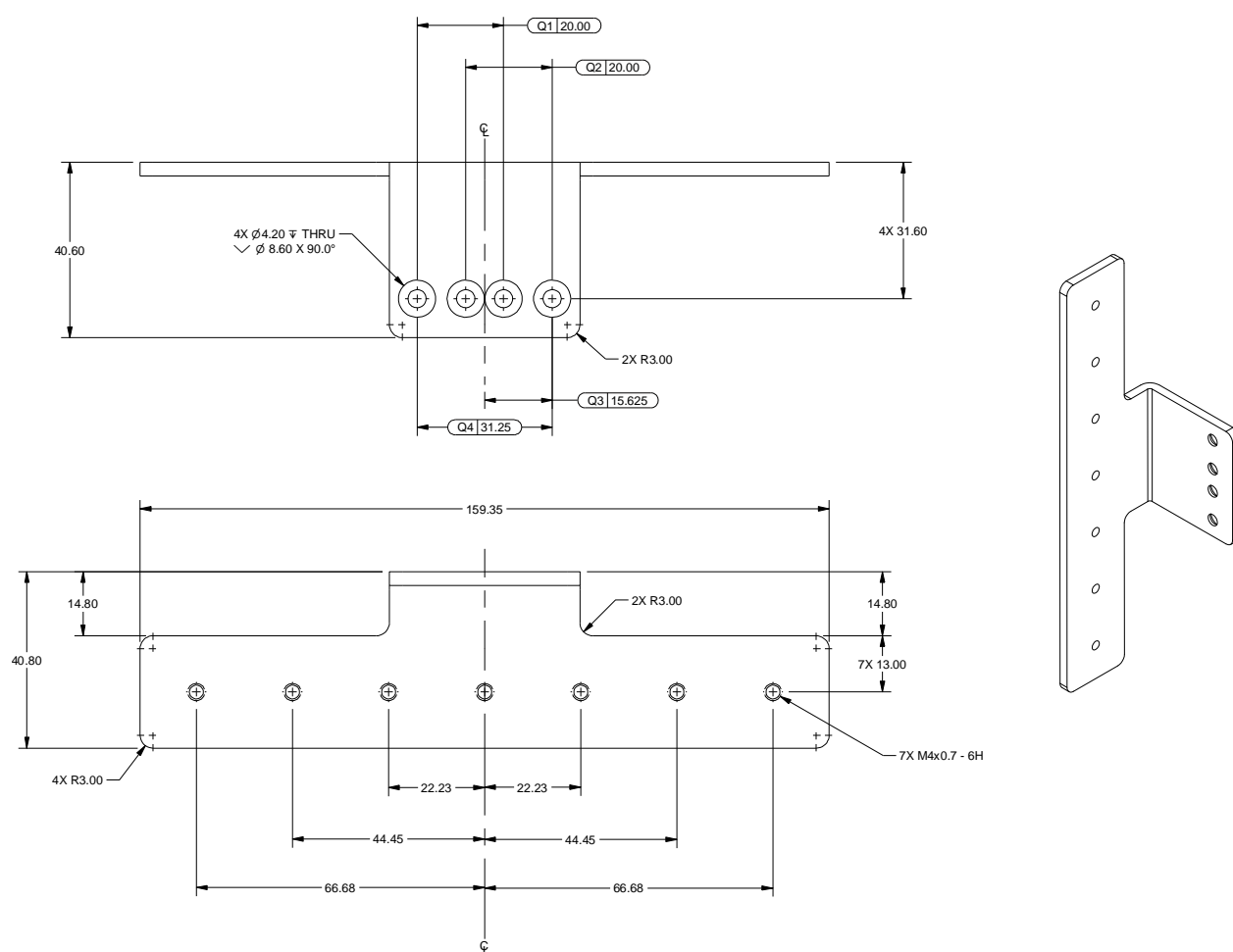
Dimensions: mm [in.]

Part Number	Description – Fits 1U (44mm) wide PDUs	
KIT-MB-32	Relocate buttons mounts to the side of the PDU. Check to ensure there is sufficient room in the front and the back of the PDU when installed to install cords. The button mount kit is included with vertical PDU.	
Bill-of-Materials		
Part Number	Description	Qty
MB-0005-0135-20	90 degree angled bracket	2
HDW-SPMFM406BB	M4x6mm screws	4



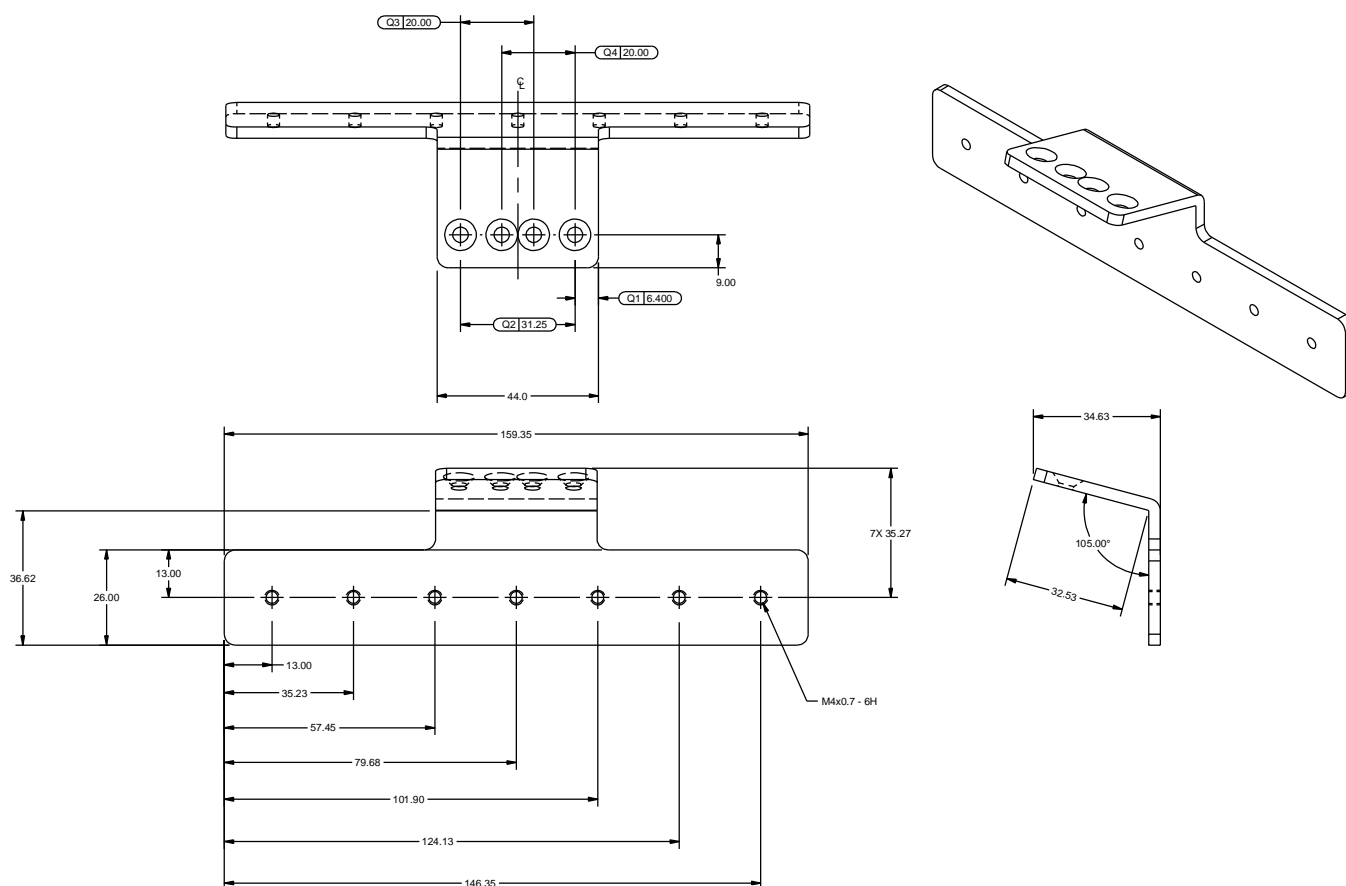
Dimensions: mm

Part Number	Description – Fits 56 mm wide PDUs	
KIT-MB-40	Relocate buttons mounts to the side of the PDU. Check to ensure there is sufficient room in the front and the back of the PDU when installed to install cords. The button mount kit is included with vertical PDU.	
Bill-of-Materials		
Part Number	Description	Qty
MB-0005-0380-20	90 degree angled bracket for 56 mm wide PDUs	2
HDW-SPMFM406BB	M4x6mm screws	4



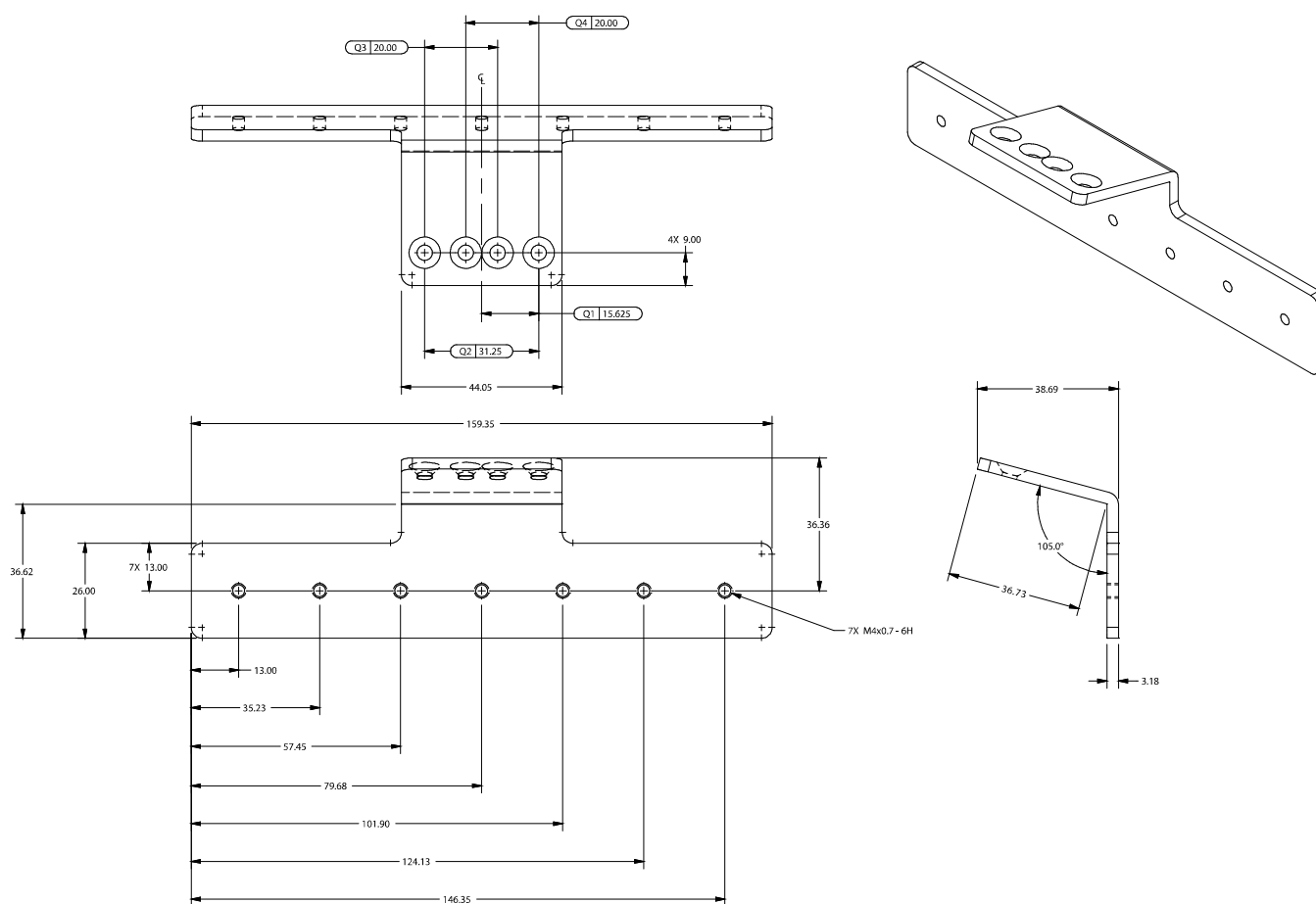
Dimensions: mm

Part Number	Description – Fits 1U (44mm) wide PDUs	
KIT-MB-33	<p>This bracket relocates buttons mounts to the side of the PDU and rotates it at a 15 ° angle to allowing two side-by-side mounted PDUs to have a smaller footprint.</p> <p>Check to ensure there is sufficient room in the front and the back of the PDU when installed to install cords. The button mount kit is included with vertical PDU.</p>	
Bill-of-Materials		
Part Number	Description	Qty
MB-0005-0189-20	Angled bracket	2
HDW-SPMFM406BB	M4x6mm screws	4



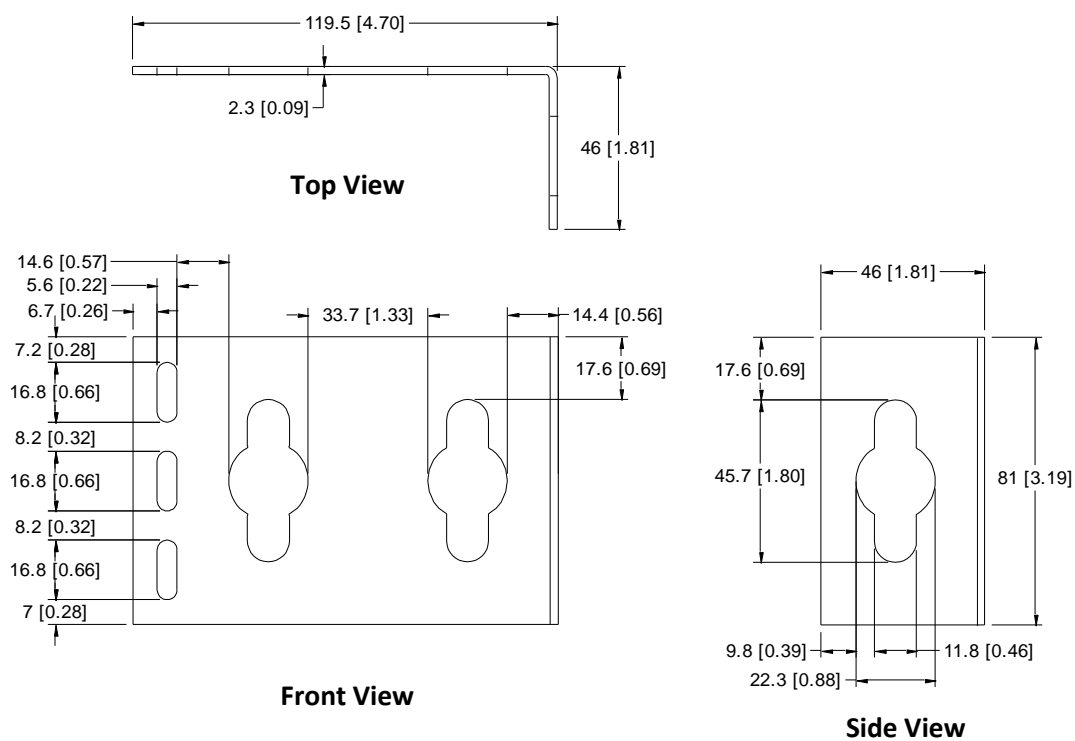
Dimensions: mm

Part Number	Description – Fits 56 mm wide PDUs	
KIT-MB-48	<p>This bracket relocates buttons mounts to the side of the PDU and rotates it at a 15 ° angle to allowing two side-by-side mounted PDUs to have a smaller footprint.</p> <p>Check to ensure there is sufficient room in the front and the back of the PDU when installed to install cords. The button mount kit is included with vertical PDU.</p>	
Part Number	Description	Qty
MB-0005-0393-20	Angled bracket	2
HDW-SPMFM406BB	M4x6mm screws	4

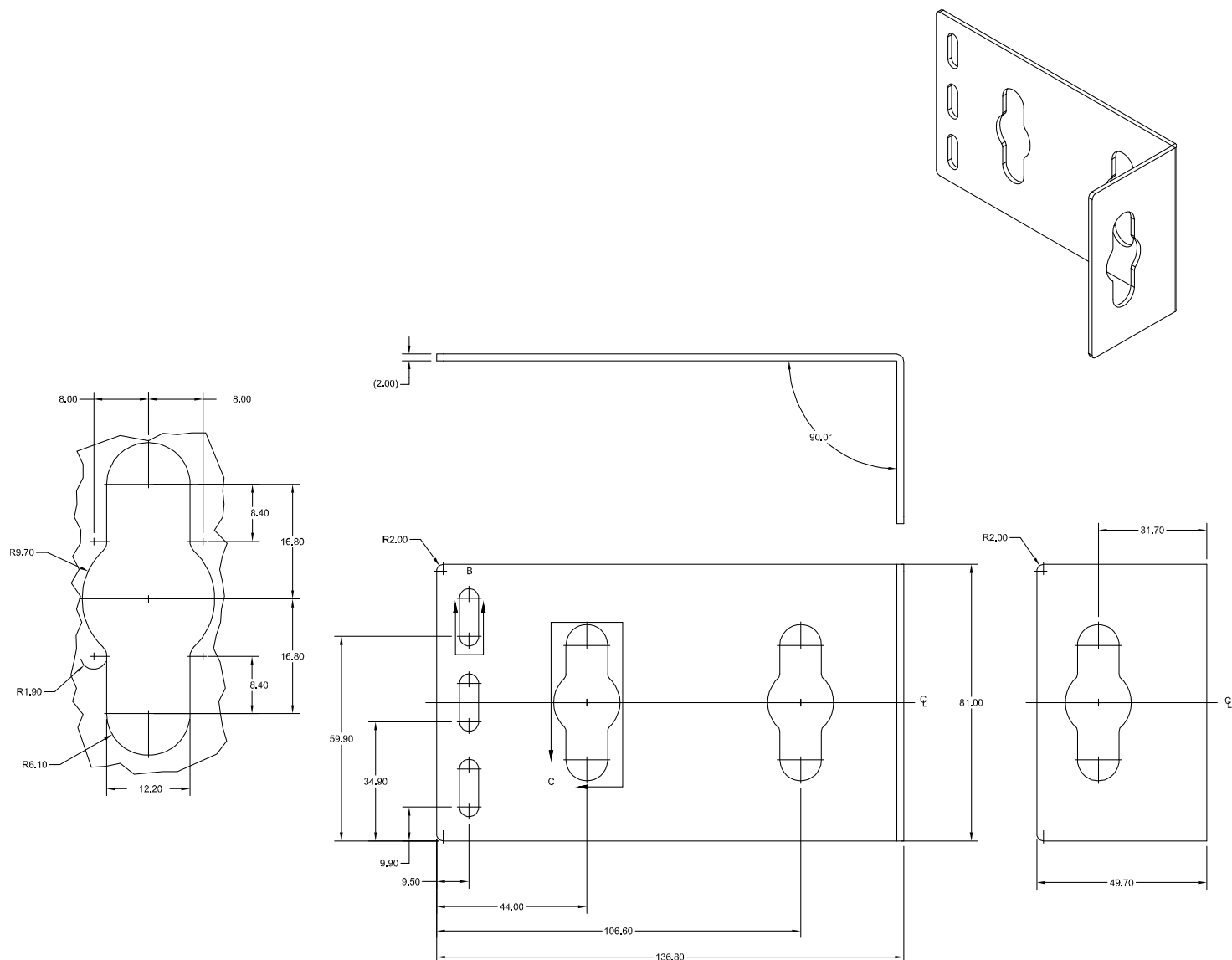


Dimensions: mm

Part Number	Description – Fits 1U (44mm) wide PDUs	
KIT-MB-01	Vertical mounting bracket kit for Rittal/Dell/HP and other cabinets to mount two 1.75 in. (44 mm) wide, 2.25 in. (57 mm) deep PDUs side by side or one dual input power feed PDU. Uses button mount kit (P/N KIT-0020) that comes with the vertical PDU.	
Bill-of-Materials		
Part Number	Description	Qty
MB-0005-0036-00	Mounting L-bracket, clear finish (Rev. A)	2
HDW-04M-00039	Screw, Phillips, pan, M5.5x13mm, zinc plate, steel, self-tapping	6

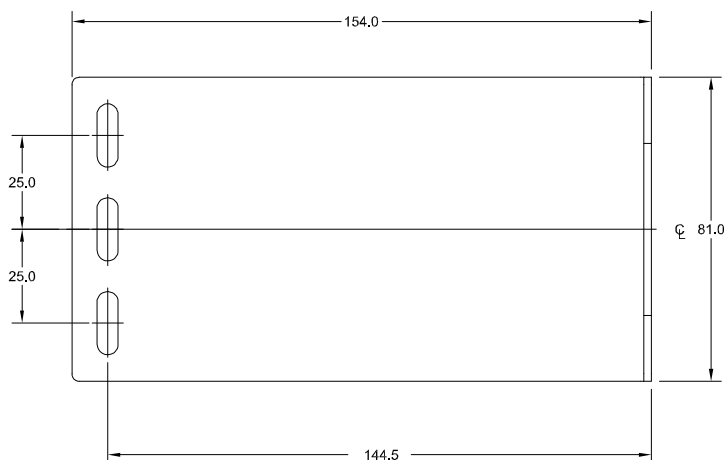
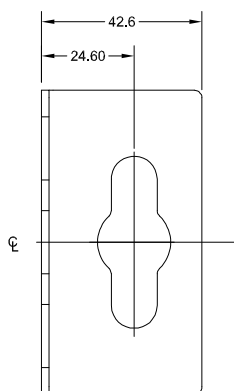


Part Number	Description – Fits 1U (44mm) and 56 mm wide PDUs	
KIT-MB1U-7	Mounting Bracket, For 56mm Wide CDUs Only, For Use With Rittal TS8, TS IT and HP Cabinets	
Bill-of-Materials		
Part Number	Description	Qty
MB-0005-0212-20	Mounting L-bracket, clear finish	2
HDW-04M-00039	Screw, Phillips, pan, M5.5x13mm, zinc plate, steel, self-tapping	6

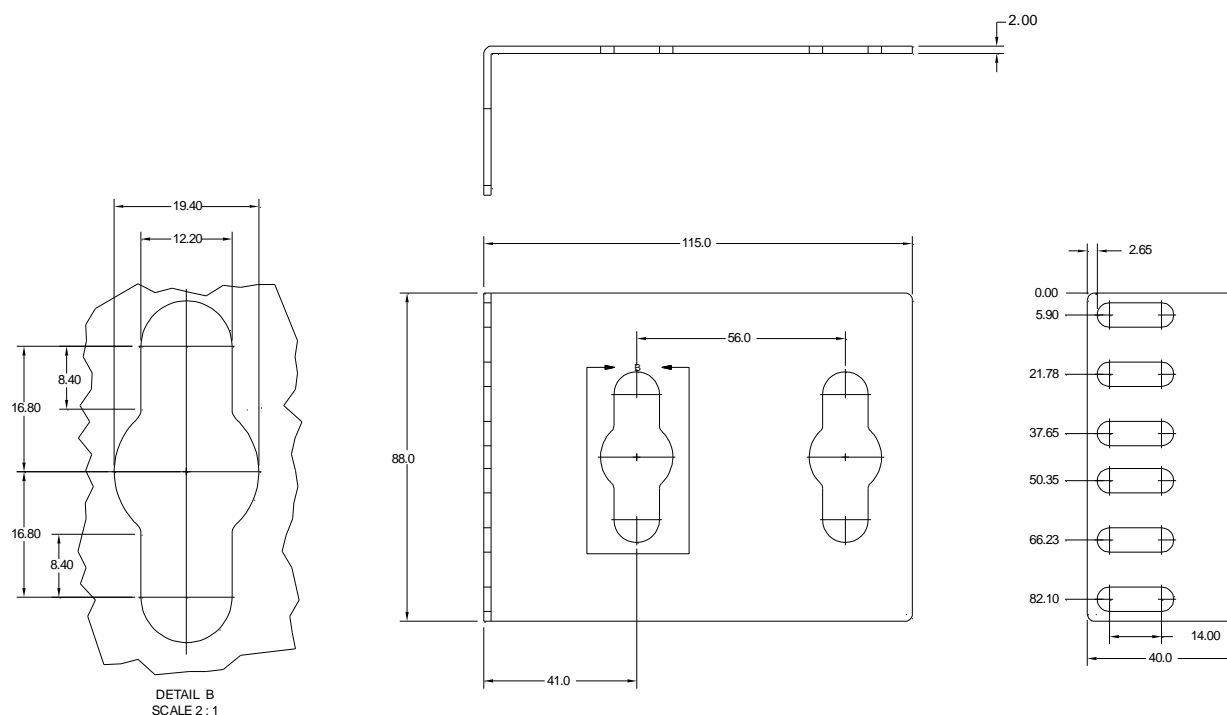
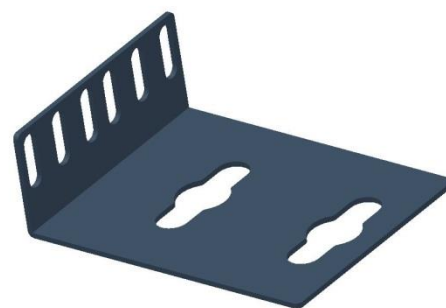


Dimensions: mm

Part Number	Description – Fits 1U (44mm) wide PDUs	
KIT-MB-12	Mounting bracket kit for 1.75 in. (44 mm) wide vertical (3.50 inch deep) PDUs in Rittal TS8 and HP cabinets. One kit per PDU. Maximum of one PDU on the left and a second one the right, with the outlets facing the rear of the cabinet. Requires Rittal TS8 that is deep enough to allow a 7 inch rail setback. Uses button mount kit (P/N KIT-0020) that comes with the vertical PDU.	
Bill-of-Materials		
Part Number	Description	Qty
MB-0005-0155-20	Mounting L-bracket	2
HDW-04M-00039	Screw, Phillips, pan, M5.5x13mm, zinc plate, steel, self-tapping	6

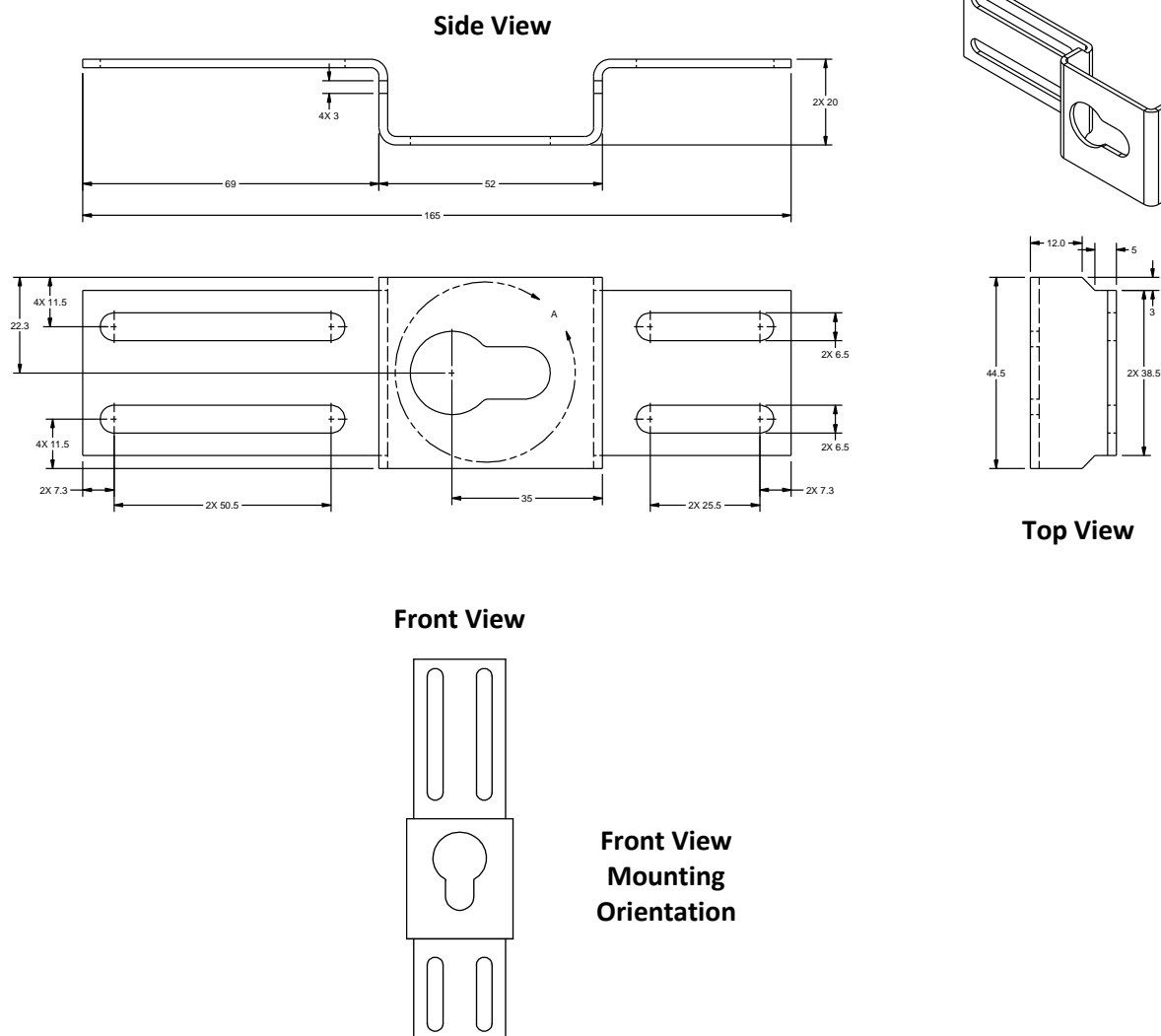


Part Number	Description – Fits most PDUs
MB-0005-0066-20	Qty. one (1) mounting bracket for use with 1.75 in., 2.20 in., 3.25 in. and 3.50 in. width PDUs Two (2) brackets needed per PDU.



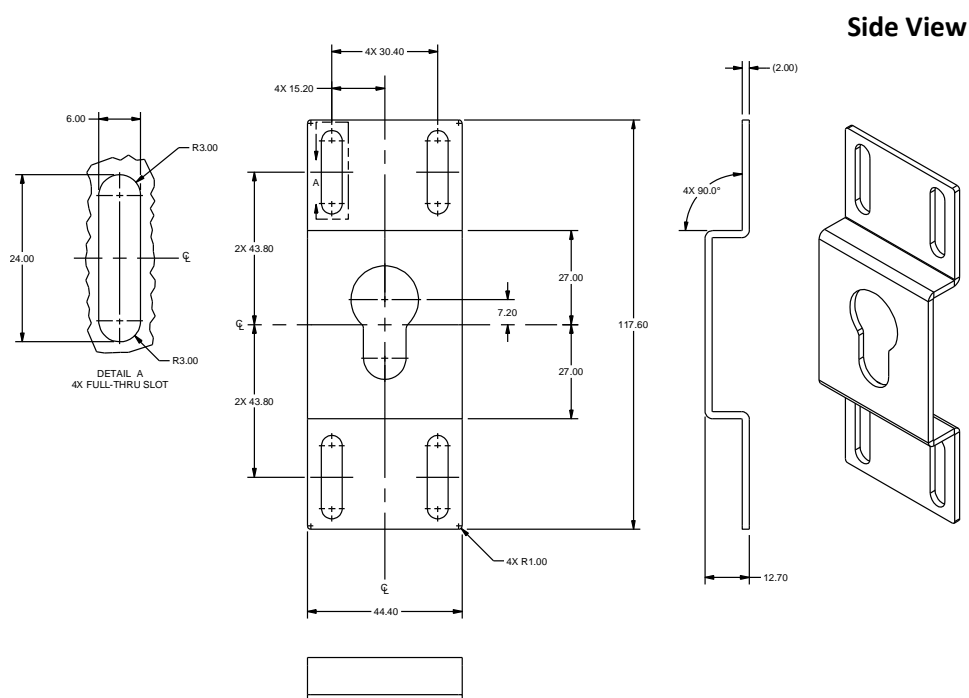
Dimensions: mm

Part Number	Description – Fits 1U wide PDUs	
KIT-MB-02	Bracket kit for button mounting of single-input feed/single-wide (1.75" wide) PDUs in dead-space between Rittal TS8, HP and other cabinets. Also used for mounting in the back of cabinets.	
Bill-of-Materials		
Part Number	Description	Qty
MB-0005-0027-00	Mounting bracket, single key hole for PDU button (Rev. D)	2
HDW-04M-00039	Screw, Phillips, pan, M5.5x13mm, zinc plate steel, self-tapping	6

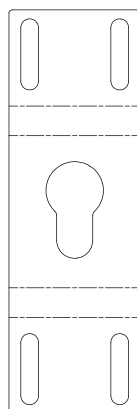


Dimensions: mm

Part Number	Description – Fits 44 mm wide PDUs	
KIT-MB-43	Bracket kit for button mounting of single-input feed, 44 mm wide PDUs in dead-space between Rittal TS IT cabinets. Also used for mounting in the back of cabinets.	
Bill-of-Materials		
Part Number	Description	Qty
MB-0005-0382-20	Mounting bracket, single key hole for PDU button (Rev. D)	2
HDW-04M-00039	Screw, Phillips, pan, M5.5x13mm, zinc plate steel, self-tapping	4



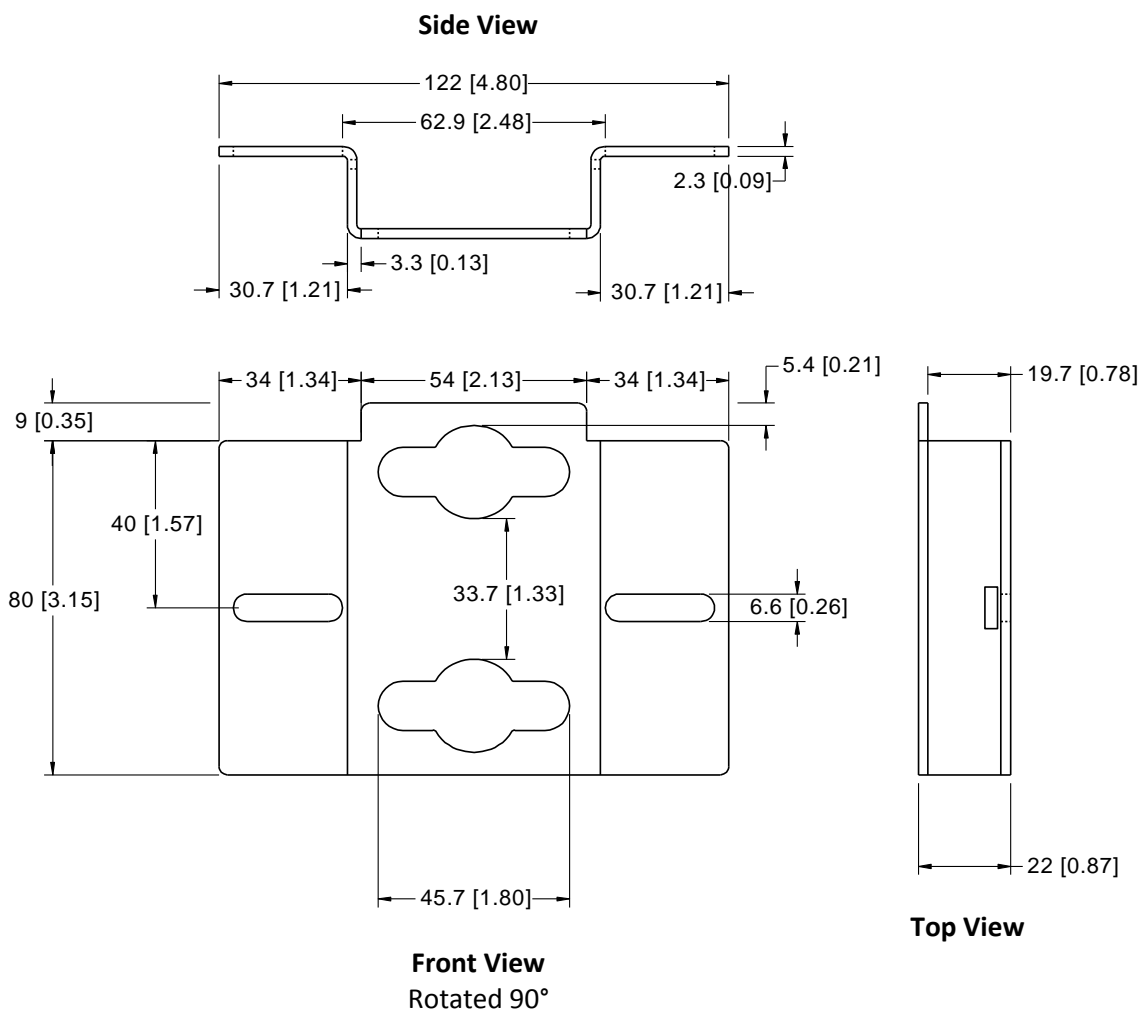
Front View



**Front View
Mounting
Orientation**

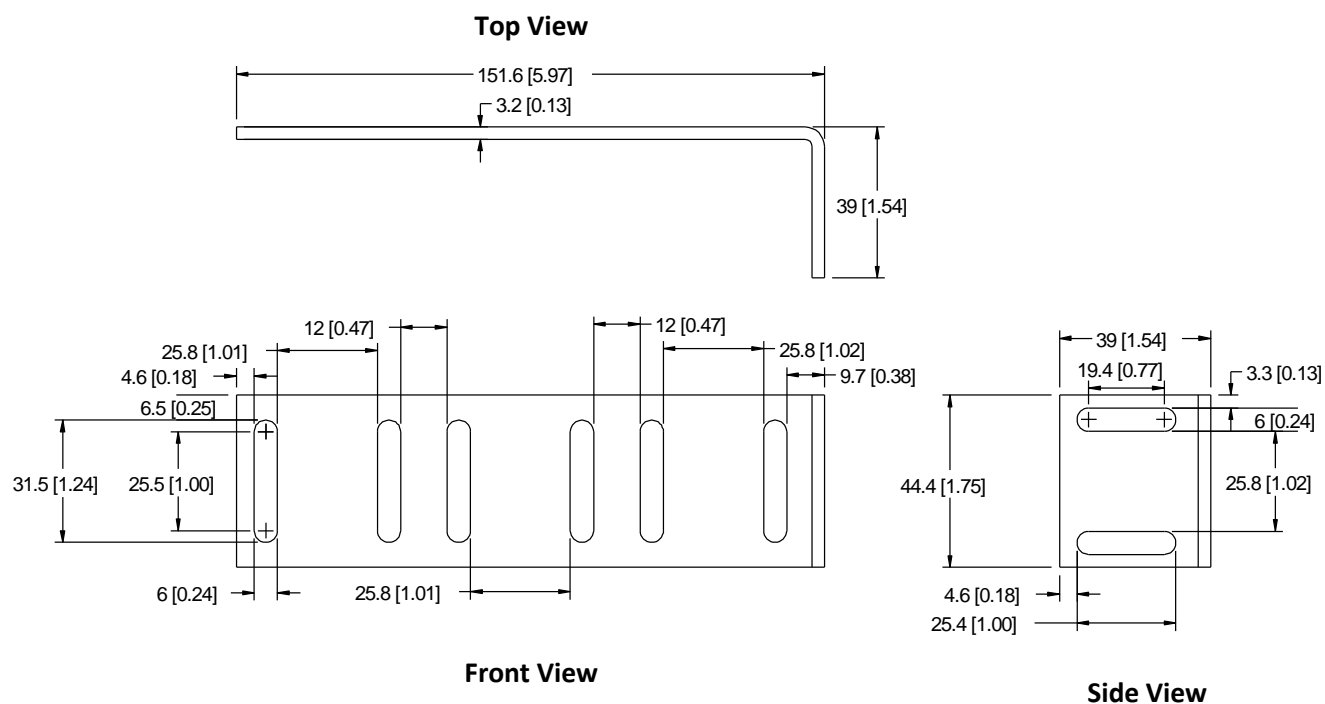
Dimensions: mm

Part Number	Description – Fits 1U wide PDUs
MB-0005-0040-00	Quantity one (1) custom dual-keyhole button mounting bracket for various Wrightline Paramount and other cabinets. Two (2) brackets needed per PDU.



Dimensions: mm [in.]

Part Number	Description – Fits 1U wide PDUs
MB-0005-EQFX-10	Mounting L-bracket, supports up to three vertical 1.75" wide PDUs, ivory (2 required). Used in conjunction with KIT-MBVPT-1x



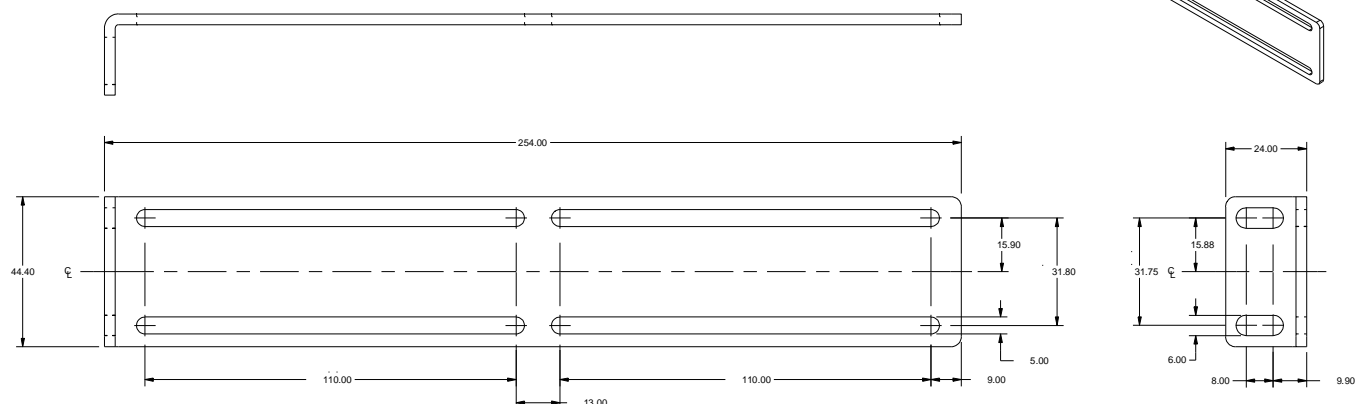
Dimensions: mm [in.]

Description – Fits 1U wide PDUs

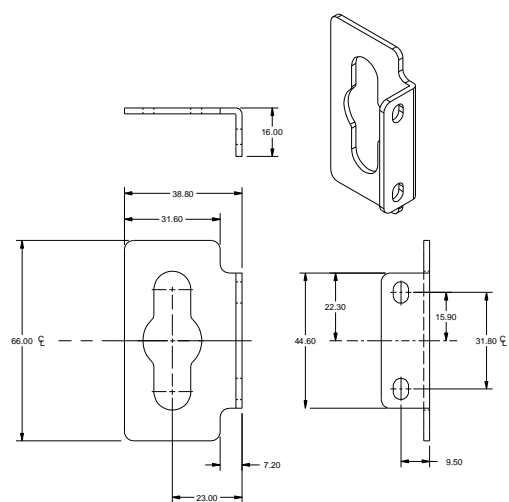
Two-Post Racks - This bracket can accommodate one or two, 1U-wide (44 mm), PDUs to be mounted vertically front-to-back in two-post racks. The location of the PDU may be adjusted along the 254 mm (10 in.) long bracket. Check for possible interference with cable management before purchasing. Button mounting kits are included with the PDU. If additional buttons are needed, please order part number KIT-0020.

Part Number	Description
KIT-MB-34	Mounting Kit for one PDU. Includes (2) mounting L-brackets, (2) adjustable PDU brackets to button mount one PDU, (2) nut plates, (4) screws and washers.
KIT-MB-35	Mounting Kit for additional PDU. Includes (2) adjustable PDU brackets to button mount one PDU, (2) nut plates, (4) screws and washers.

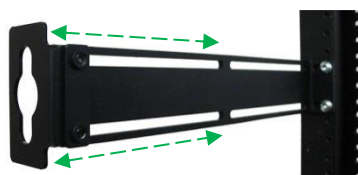
Two-post mounting L-bracket



Adjustable PDU bracket for button mounting



Mounting bracket assembly for one PDU



Mounting bracket assembly for two PDUs



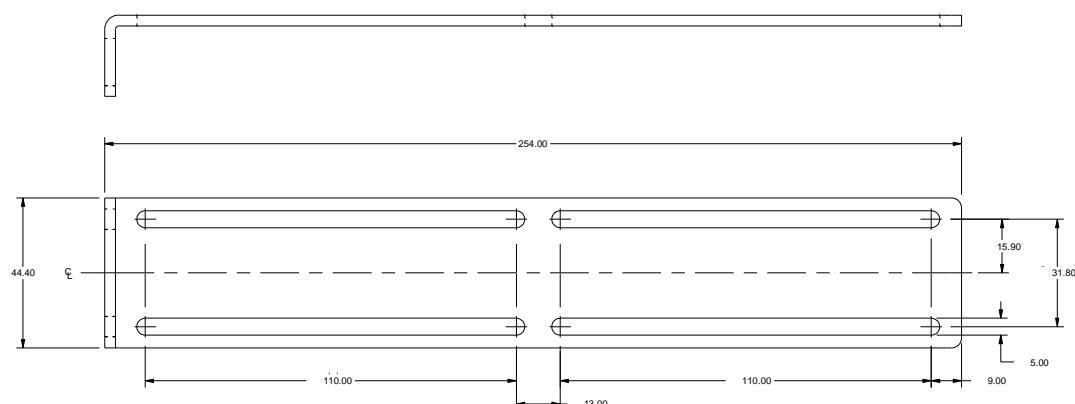
Dimensions: mm

Description – Fits 56 mm wide PDUs

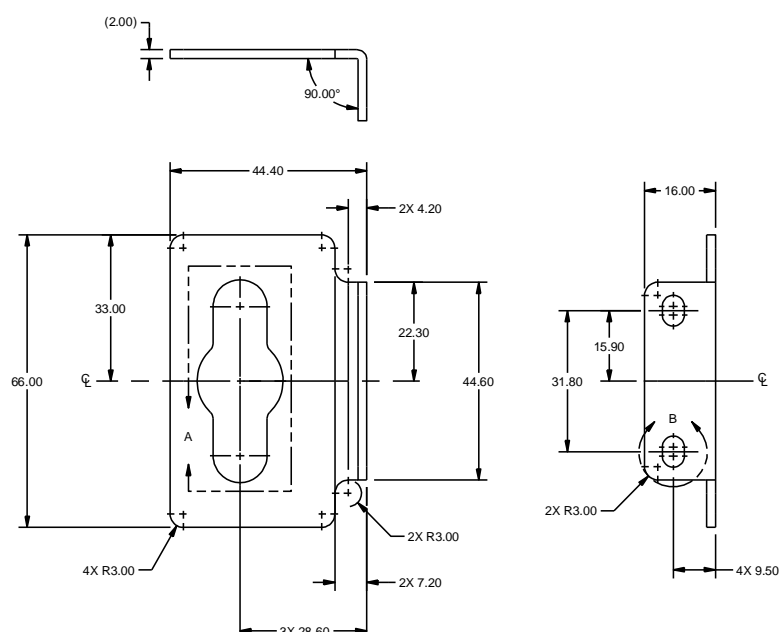
Two-Post Racks - This bracket can accommodate one or two 56 mm wide PDUs to be mounted vertically front-to-back in two-post racks. The location of the PDU may be adjusted along the 254 mm (10 in.) long bracket. Check for possible interference with cable management before purchasing. Button mounting kits are included with the PDU. If additional buttons are needed, please order part number KIT-0020.

Part Number	Description
KIT-MB-41	Mounting Kit for one PDU. Includes (2) mounting L-brackets, (2) adjustable PDU brackets to button mount one PDU, (2) nut plates, (4) screws and washers.
KIT-MB-42	Mounting Kit for additional PDU. Includes (2) adjustable PDU brackets to button mount one PDU, (2) nut plates, (4) screws and washers.

Two-post mounting L-bracket



Adjustable PDU bracket for button mounting



Dimensions: mm

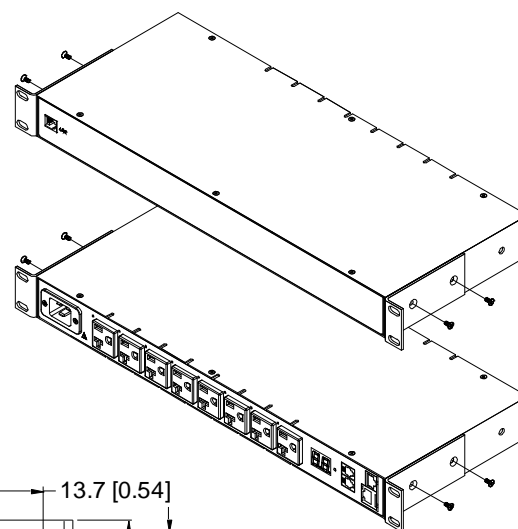
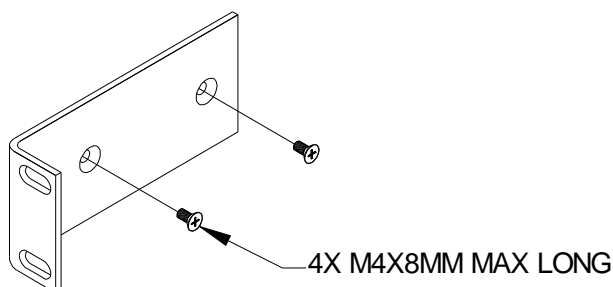
Horizontal Mounting Solutions

Part Number	Description – Fits 1U PDUs	
KIT-MBH1-1B	Horizontal 19" rack mounting L-bracket kit, 1U, black*	
Bill-of-Materials		
Part Number	Description	Qty
MB-0005-0023-20	Mounting L-bracket, 1U, black (Rev. B)	2
HDW-SPMFM408BB	Screw, Phillips, flat, M4x8mm, black	4

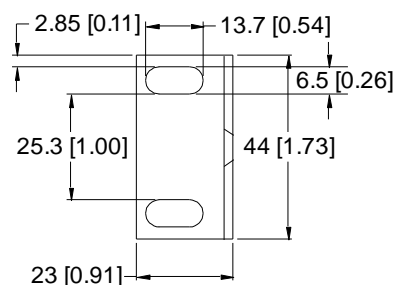
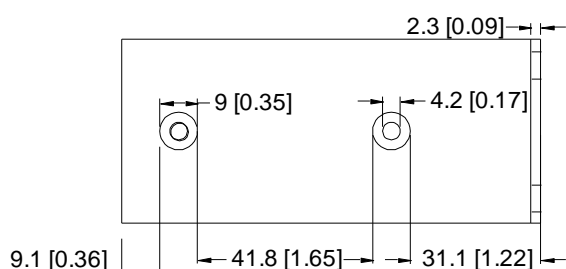
Part Number	Description – Fits 1U PDUs	
KIT-MBH1-1	Horizontal 19" rack mounting L-bracket kit, 1U, beige*	
Bill-of-Materials		
Part Number	Description	Qty
MB-0005-0023-10	Mounting L-bracket, 1U, beige (Rev. B)	2
HDW-SPMFM408BN	Screw, Phillips, flat, M4x8mm, steel nickel	4

Note:

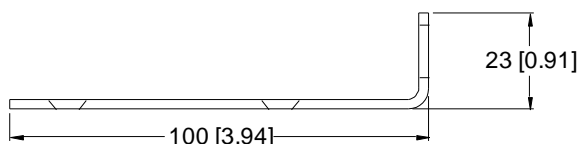
* One kit is supplied with each 1U horizontal Server Technology Sentry PDU



Side View

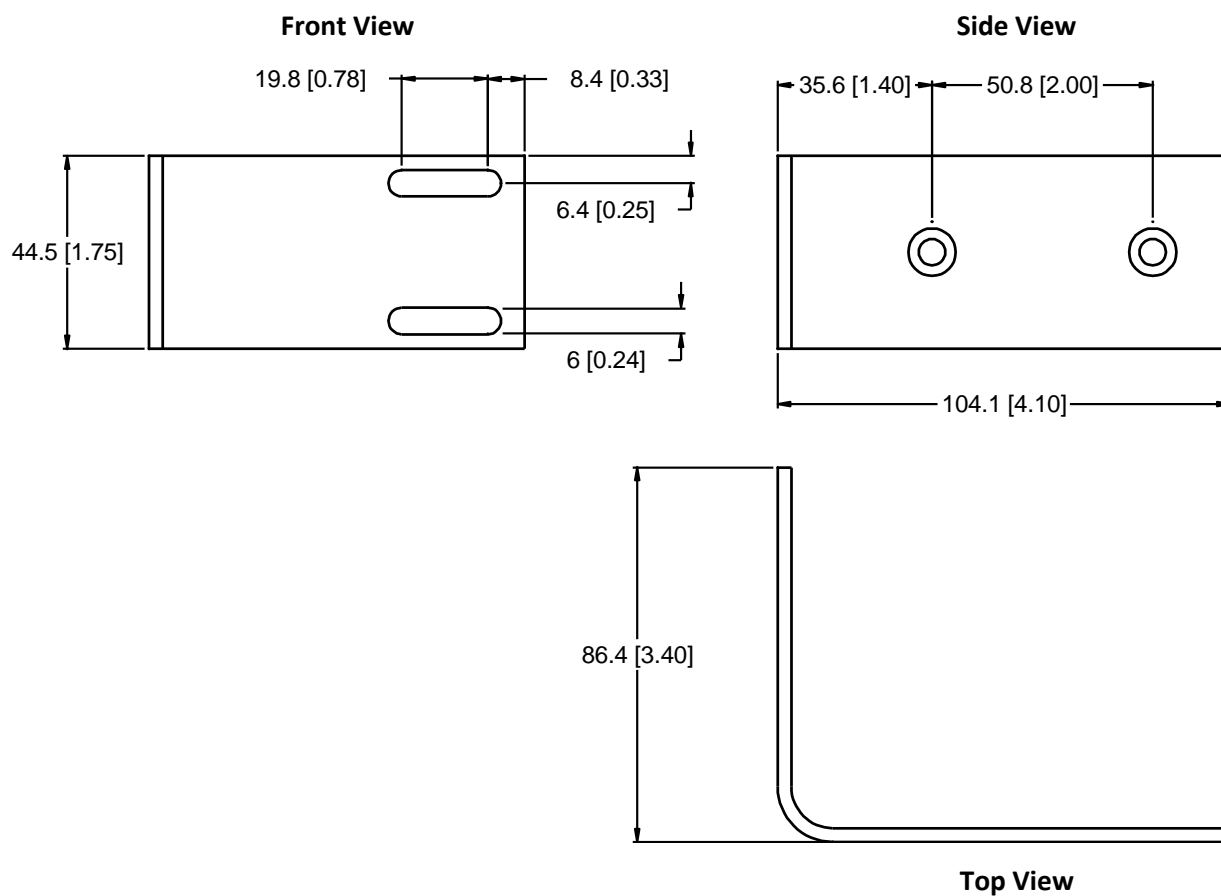


Front View



Dimensions: mm [in.] **Top View**

Part Number	Description – Fits 1U PDUs
HDW-MBXT-1U	Horizontal 23" rack mounting L-bracket kit, 1U, beige. Includes 1 bracket

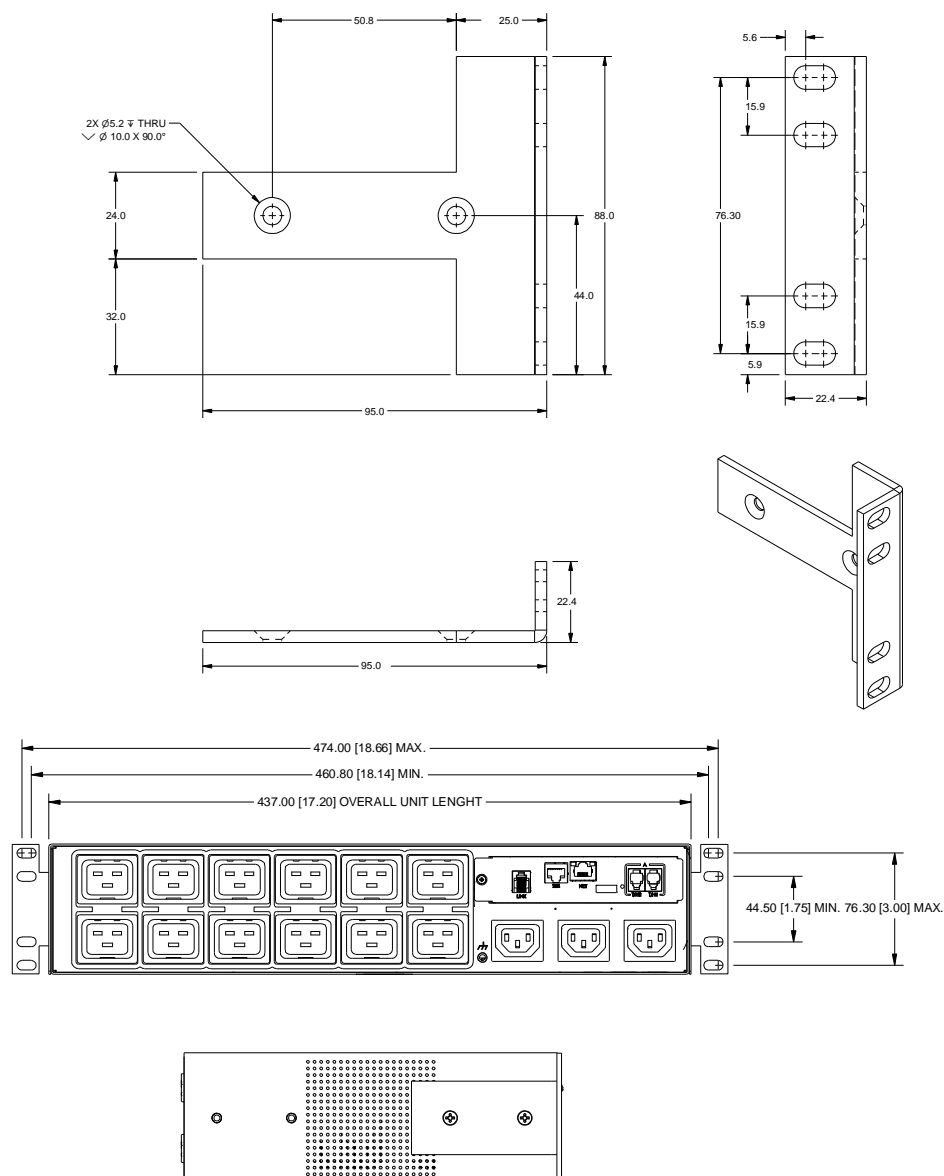


Dimensions: mm [in.]

Part Number	Description – Fits 2U PDUs	
KIT-MB-18	Horizontal EIA-310-D Compliant 19" rack mounting L-bracket kit, 2U, STI black paint*	
Bill-of-Materials		
Part Number	Description	Qty
MB-0005-0172-20	Mounting L-bracket, 2U products, black (Rev. A)	2
HDW-SPMFM510BB	Screw, Phillips, flat, M5x10mm	4

Note:

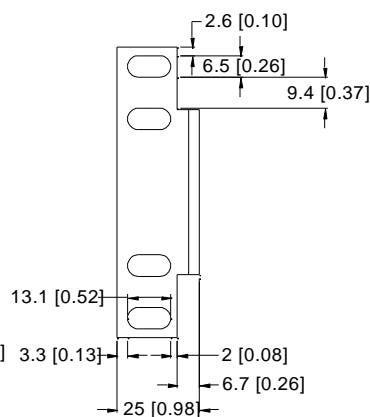
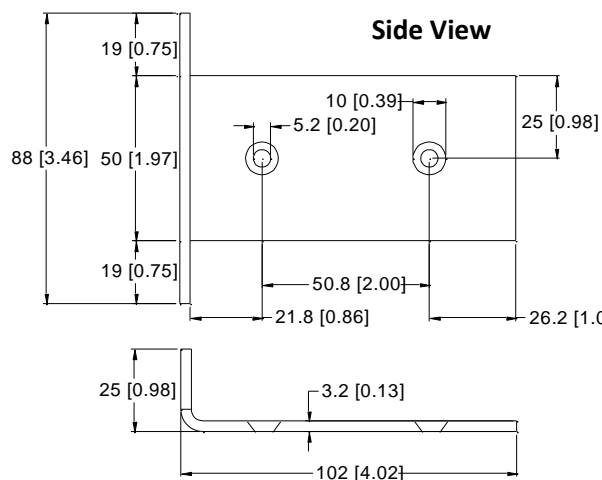
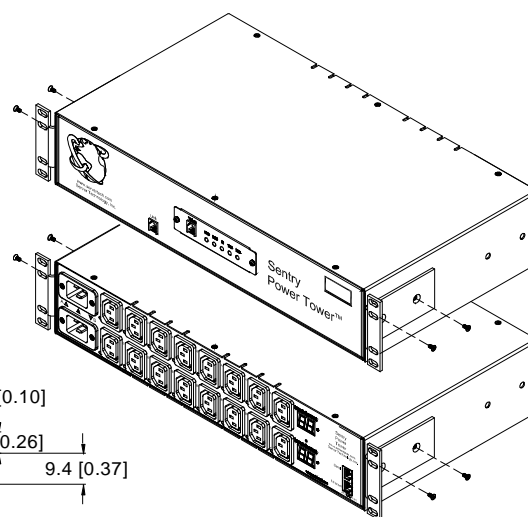
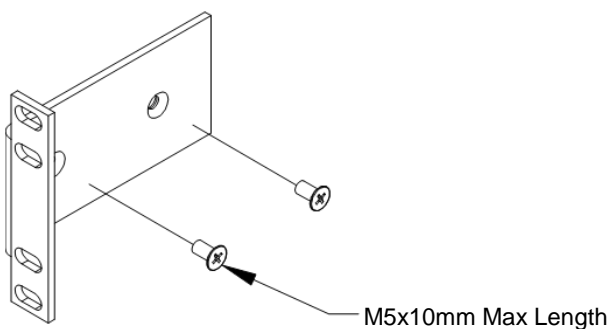
* One kit is supplied with each 2U horizontal Server Technology Sentry PDU



Dimensions: mm [in.]

Part Number	Description – Fits 2U PDUs	
KIT-MB2U-4B	Horizontal 19" rack mounting L-bracket kit, 2U, STI black paint	
Bill-of-Materials		
Part Number	Description	Qty
MB-0005-0026-20	Mounting L-bracket, 2U products, black (Rev. A)	2
HDW-SPMFM510BB	Screw, Phillips, flat, M5x10mm	4

Part Number	Description – Fits 2U PDUs	
KIT-MB2U-4	Horizontal 19" rack mounting L-bracket kit, 2U, STI beige paint	
Bill-of-Materials		
Part Number	Description	Qty
MB-0005-0026-10	Mounting L-bracket, 2U products, beige (Rev. A)	2
HDW-SPMFM510BN	Screw, Phillips, flat, M5x10mm, steel nickel	4

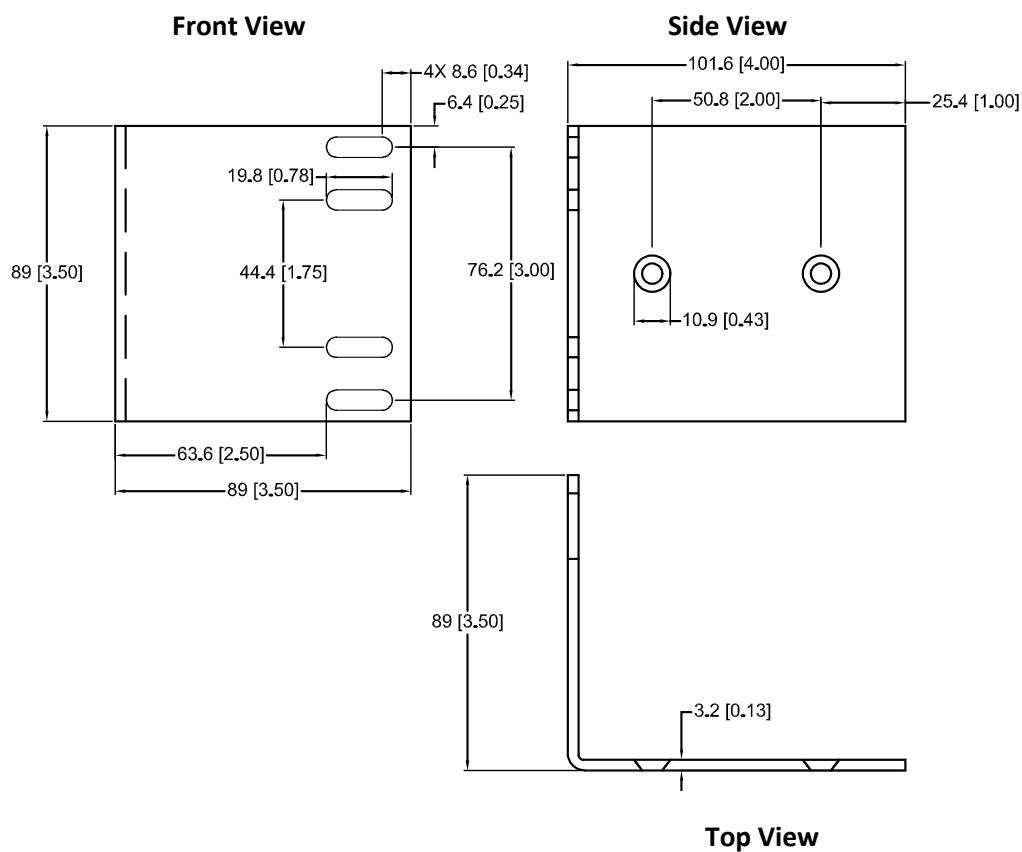


Top View

Dimensions: mm [in.]

Part Number	Description – Fits 2U PDUs
HDW-MBXT-2UB	Horizontal 23" rack mounting L-bracket kit, 2U, beige. Includes 2 brackets, STI Black paint

Part Number	Description – Fits 2U PDUs
HDW-MBXT-2U	Horizontal 23" rack mounting L-bracket kit, 2U, beige. Includes 2 brackets, STI Beige paint



Dimensions: mm [in.]

Headquarters – North America

Server Technology, Inc.
1040 Sandhill Drive
Reno, NV 89521
United States of America
+1 (775) 284 2000 Tel
+1 (775) 284 2065 Fax
sales@servertech.com
www.servertech.com
www.servertechblog.com

© Server Technology. Server Technology, Server Technology Globe, Switched CDU, CDU are registered trademarks of Server Technology, Inc. All other trademarks or registered trademarks belong to their respective owners. Information subject to change without notice.