



To upgrade your current 5.0x SPM to the SPM 5.1x version, please perform the following:

*****First and foremost, create and save a current DB backup of your 5.0 SPM system**

- 1) Log into the CLI of your current SPM
 - a. Issue the command 'cnfg set shell'
 - b. Issue the command 'df -h'
 - c. You will see something just short of 250GB or just short of 500GB, which will determine the file to get.

- 2) Log into the SPM Download Center using your email address and password you used when you set up your account. If you have not done so, please create your account by using your contract number and 'SPM104' as the password. Here is the link:
 - a. <http://www.servertech.com/spmdownloads>
 - b. Download the appropriate 5.2x version, based on step c, by clicking one of the following

SPM-APP release version 5.1 - version 5.1 APP (250GB Only) - January 27, 2012
SPM-APP can be either 250GB or 500GB (contact support if you need help identifying what y drive.

- For 250gb
- **Installer (Release 5.1 APP (250GB Only))**
 - SPM 5.1 Release Notes
 - Hyperfast Setup for Sentry Power Manag
 - Instructions for Generic SPM Upgrade

SPM-APPR release version 5.1 - version 5.1 APPR (500GB Only) - January 27, 2012
SPM-APP can be either 250GB or 500GB (contact support if you need help identifying what y drive.

- For 500gb
- **Installer (Release 5.1 APPR (500GB Only))**
 - SPM 5.1 Release Notes
 - Hyperfast Setup for Sentry Power Manag
 - Instructions for Generic SPM Upgrade

SPM-APPV release version 5.1 - version 5.1 V - January 27, 2012

- For VM
- **Installer (Release 5.1 V)**
 - SPM 5.1 Release Notes
 - Hyperfast Setup for Sentry Power Manager - The APPV Vii
 - Instructions for Generic SPM Upgrade

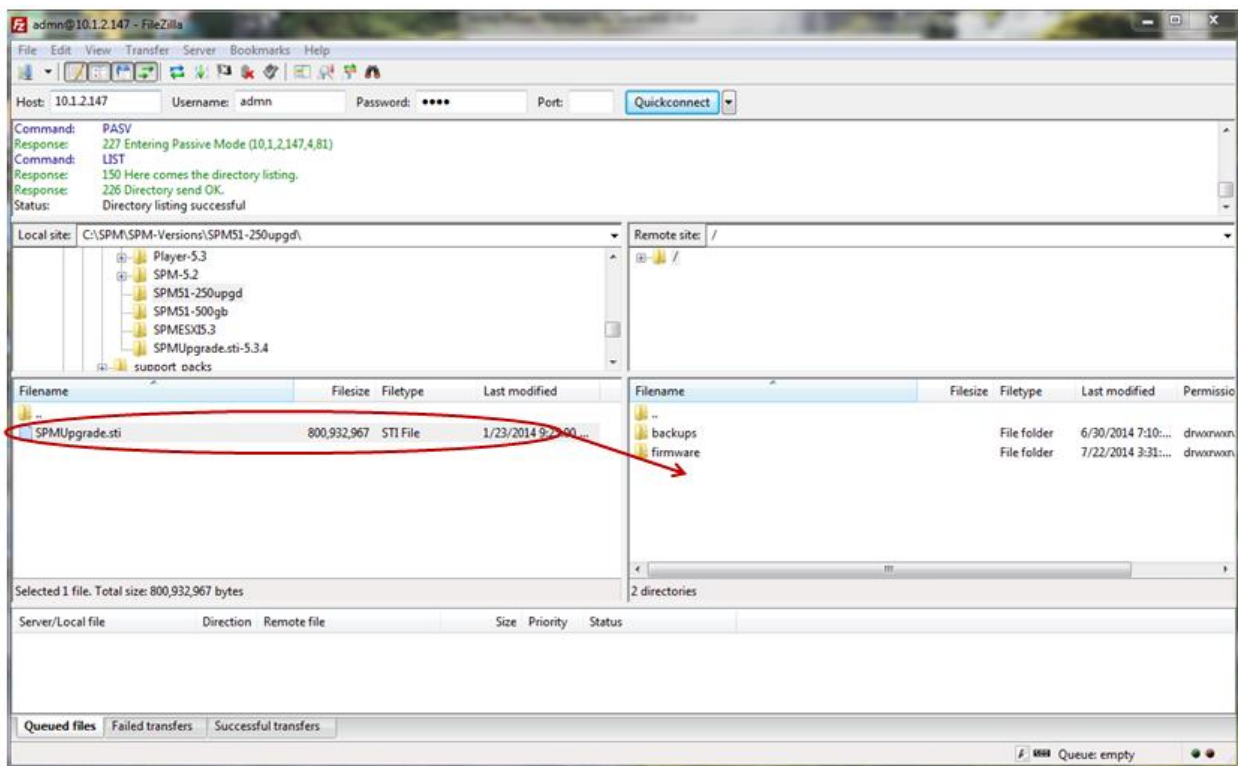


Server Technology, Inc.

1040 Sandhill Drive
Reno, Nevada 89521

www.servertech.com
+1.775.284.2000
+1.800.835.1515
+1.775.284.2065

- 3) Once downloaded, place the file in a location SPM can access
- 4) Rename the file to SPMUpgrade.sti
- 5) Open a Filezilla or another ftp client application and connect to SPM as an administrator
- 6) Place the 5.1x SPM upgrade file into the root of SPM as shown below



- 7) **Do not interrupt the upgrade.** It should take anywhere from 30 minutes to one hour to complete but this represents a best estimate

****** Once you can ping SPM, clear all browser cache history, close the browser and re-open***

- 8) Log back into the GUI, go to Application Help->Product License
 - a. Verify the window properly reflects the new 5.1x version
- 9) If you have any questions or issues, please contact Technical Support at support@servertech.com