



# Server Technology, Inc.

1040 Sandhill Drive  
Reno, Nevada 89521

www.servertech.com  
+1.775.284.2000  
+1.800.835.1515  
+1.775.284.2065

To upgrade your current 5.1x SPM to the newly released SPM 5.2x, please perform the following:

**\*\*\*First and foremost, create and save a current DB backup of your 5.1 SPM system**

- 1) Log into the SPM Download Center using your email address and password you used when you set up your account. If you have not done so, please create your account by using your contract number and 'SPM104' as the password. Here is the link:
  - a. <http://www.servertech.com/spmdownloads>
  - b. Download the appropriate 5.2x version, based on step c, by clicking one of the following

---

SPM version 5.2.7 - The upgrade version can be used with the 250GB, 500GB, or VM version of SPM v5.1 or higher. You must be running SPM v5.1 or higher on your system to use the v5.2.7 upgrade file. If you currently have SPM and are not on 5.1, please upgrade to 5.1 (below) before you upgrade to 5.2.7. If you have any questions, please contact our [Support Team](#).

For new SPM Users-- you should download the "SPM 5.2 for VM Server". If you just purchased SPM, this is the version you should originally start with.

- **SPM 5.2.7 upgrade for 250GB, 500GB, and VM versions (must be on SPM 5.1 or higher to upgrade)**
- SPM 5.2 for VM Server (Full Version - For New Users)
- SPM 5.2 Release Notes
- Hyperfast Setup for Sentry Power Manager - The APPV Virtual Solution
- Instructions for Generic SPM Upgrade
- SPM 5.2 Quick Start Guide

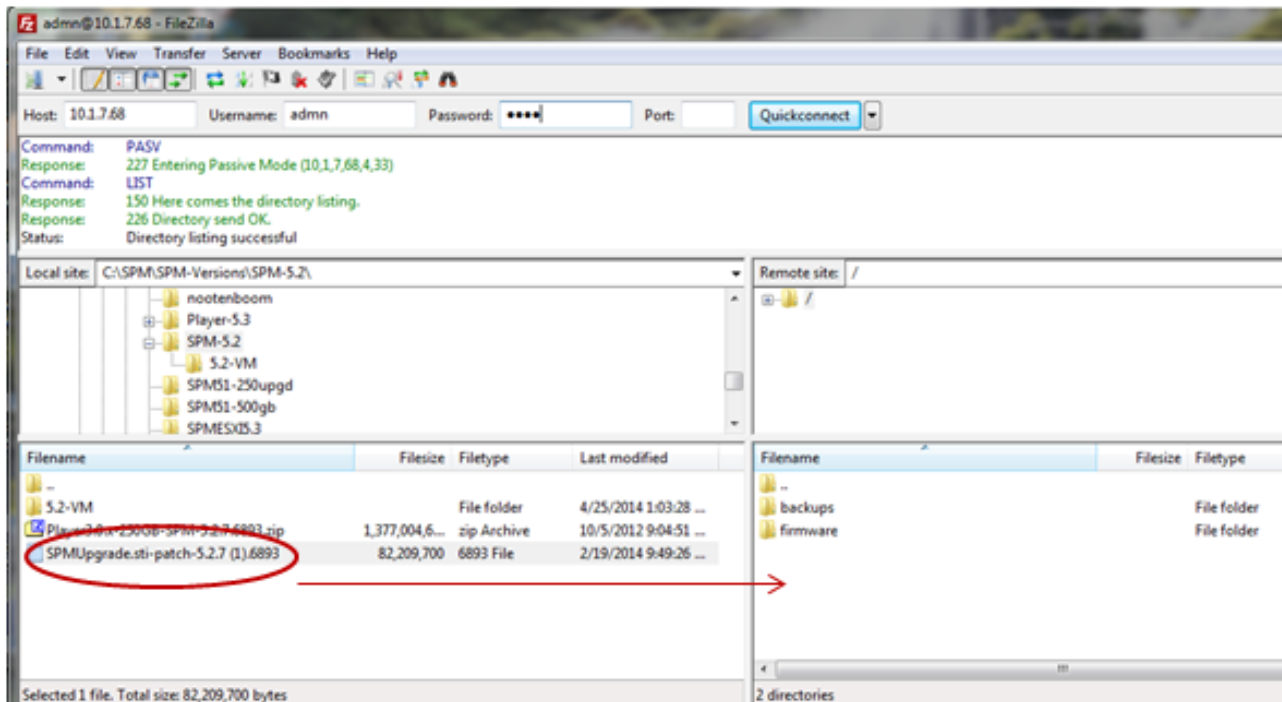
- 2) Once downloaded, place the file in a location SPM can access
- 3) Rename the file to SPMUpgrade.sti
- 4) Open a Filezilla or another ftp client application and connect to SPM as an administrator
- 5) Place the 5.2x SPM upgrade file into the root of SPM as shown below



# Server Technology, Inc.

1040 Sandhill Drive  
Reno, Nevada 89521

www.servertech.com  
+1.775.284.2000  
+1.800.835.1515  
+1.775.284.2065



- 6) **Do not interrupt the upgrade.** It should take anywhere from 30 minutes to one hour to complete but this represents a best estimate

***\*\*\* Once you can ping SPM, clear all browser cache history, close the browser and re-open***

- 7) Log back into the GUI, go to Application Help->Product License
  - a. Verify the window properly reflects the new 5.2x version
- 8) If you have any questions or issues, please contact Technical Support at [support@servertech.com](mailto:support@servertech.com)