

SERVER TECHNOLOGY, INC
 PROPRIETARY INFORMATION

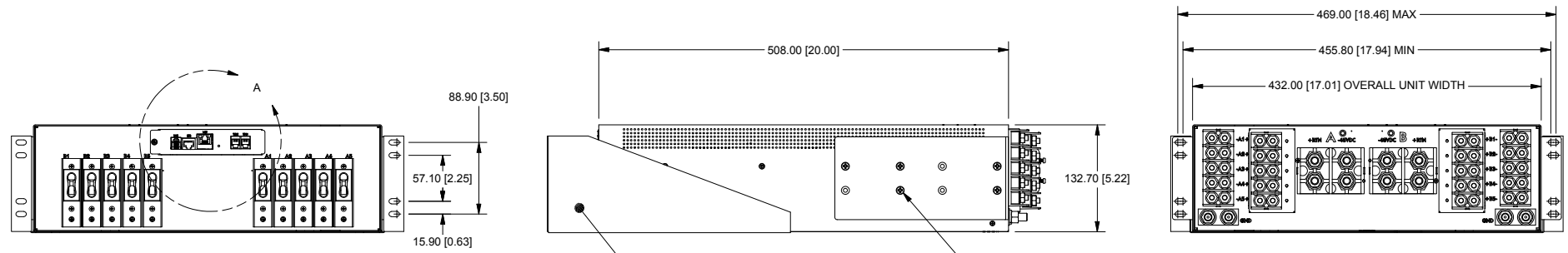
THIS DOCUMENT IS THE SOLE PROPERTY OF SERVER TECHNOLOGY, INC. THE RELEASE OF DATA CONTAINED IN THIS DOCUMENT AND THE REPRODUCTION OF THIS DOCUMENT, IN WHOLE OR IN PART, WITHOUT THE WRITTEN PERMISSION OF SERVER TECHNOLOGY, INC IS PROHIBITED.

THESE COMMODITIES, TECHNOLOGY OR SOFTWARE WERE EXPORTED FROM THE UNITED STATES IN ACCORDANCE WITH THE EXPORT ADMINISTRATION REGULATIONS. DIVERSION CONTRARY TO U.S. LAW IS PROHIBITED.

RoHS COMPLIANT

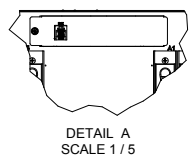
| REVISION HISTORY | | | | |
|------------------|-----|----------------|-----------|----------|
| ZONE | REV | DESCRIPTION | DATE | APPROVED |
| - | 1 | INITIAL DESIGN | 6/13/2011 | CDN/PG |

- NOTES:
- DIMENSIONS ARE IN MILLIMETERS AND [] BRACKETS ARE IN INCHES.
 - DIMENSIONS ARE NOMINAL. INFORMATION SUBJECT TO CHANGE WITHOUT NOTICE.




SUPPORT TRAY DOES NOT MOUNT TO UNIT TO ALLOW FOR USE IN RACKS FROM 24" TO 30" IN DEPTH. IT IS NOT INTENDED TO SUPPORT THE FULL WEIGHT OF THE UNIT, BUT ONLY THE REAR TO PREVENT SAGGING.

5X PER SIDE



| | |
|---|---|
| TOLERANCES (UNLESS OTHERWISE SPECIFIED) LINEAR DIMENSIONS: X = ± .500 .XX = ± .200 .XXX = ± .130 ANGULAR DIMENSIONS: X = ± 1° .XX = ± .5° .XXX = ± .25° | * INTERPRET DRAWING IAW ASME Y14.100-2000 * DIMENSIONING & TOLERANCING IAW ASME Y14.5M-2007 * REMOVE ALL BURRS AND SHARP EDGES 2 R MAX * DIMENSIONS ARE IN MILLIMETERS * DIMENSIONAL LIMITS APPLY AFTER PLATING/COATING. DO NOT SCALE DRAWING THIRD ANGLE PROJECTION |
| SYMBOLS (G#) = CRITICAL DIM. (S) = COSMETIC SURFACE | MATERIAL: FINISH: |

SERVER TECHNOLOGY, INC 

1040 Sandhill Drive Reno, NV 89521

DRAWING TITLE:
OUTLINE DRAWING, ENA-48125-1G

| | | | |
|----------------------|---------------------------|-------------------------------|-----------------|
| SIZE B | CAGE CODE 049V0 | DWG NO. 412-48125-1 | REV 1 |
| SCALE NONE | | SHEET 1 OF 1 | |