

# Digi Passport™ and Server Technology® Sentry™ Switched PDUs

In-band and out-of-band access of network devices such as routers, switches and servers are critical in designing and maintaining robust data centers. Console servers offer a secure and auditable method for gaining access to these devices through either a web-based interface, or a serial or modem connection when the network is down or unavailable.

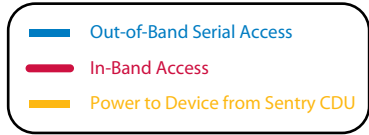
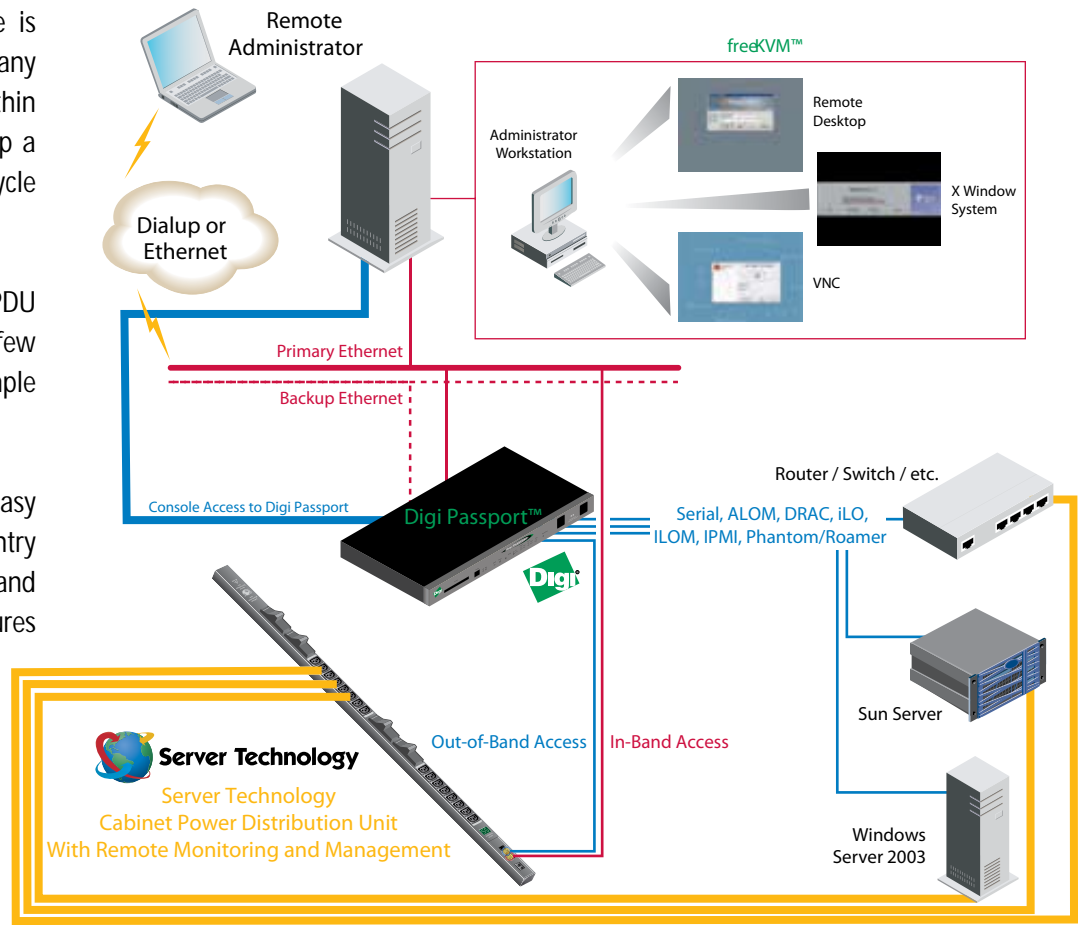
Another key piece in managing a data center is the ability to monitor and control power distribution to those devices from a cabinet level. The Digi Passport™ console server is designed to interact with the Server Technology Sentry™ Switched PDU and provide remote power management and reboot without ever having to leave the Digi Passport interface.

## How it works...

If a router, server or other device is locked up, pressing CTRL+Z (or any other user selectable key) from within the console server screen brings up a menu allowing the operator to cycle power to that unit.

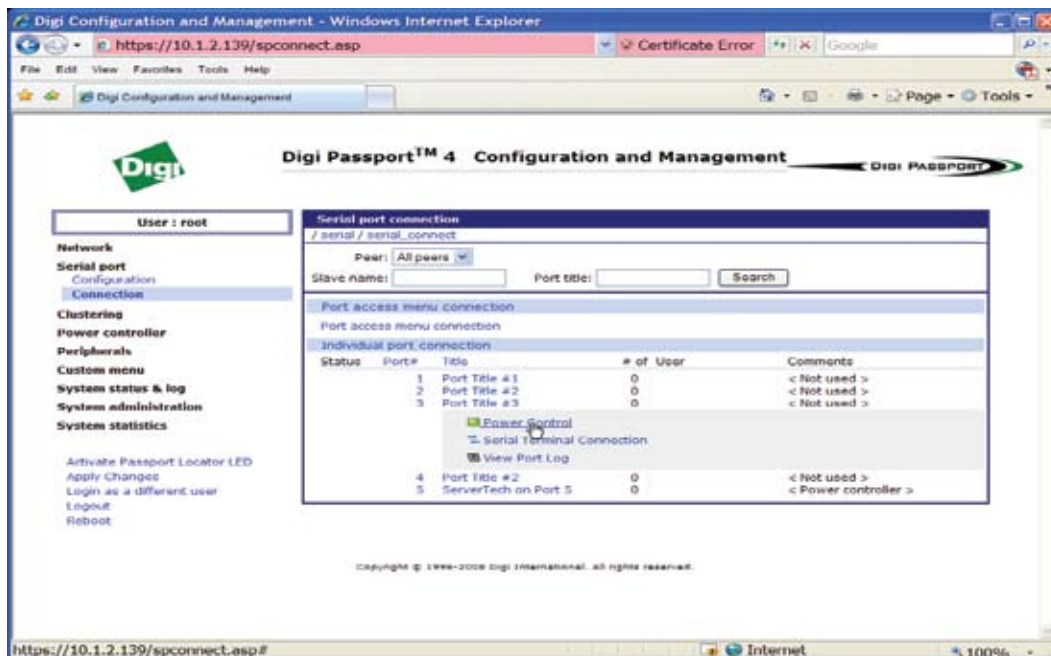
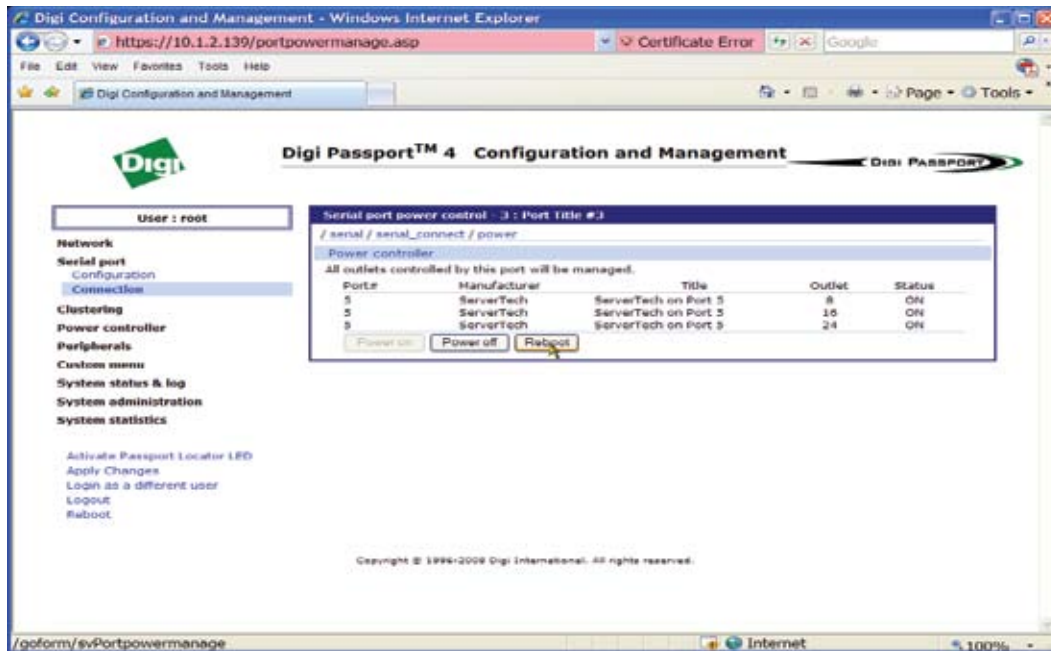
Alternatively, the Sentry Switched PDU outlets may be accessed with a few clicks from the Digi Passport's simple web-based graphical interface.

Both methods offer quick and easy access to the Server Technology Sentry Cabinet Power Distribution Units and related power management features from the Digi Passport interface.



## Benefits

The Digi Passport connected to Server Technology's Sentry PDUs provides secure remote access to both the console ports of networked equipment and the power controls of the PDU through either in-band or out-of-band connections. Access to the Server Technology Sentry PDU remote reboot features are made directly through the Digi Passport console without a separate login and password. The Digi Passport provides advanced auditing and logging capabilities to meet Sarbanes-Oxley, HIPAA, and other compliance requirements.



## Benefits

### Digi Passport Features

- Available with 4, 8, 16, 32 and 48 port configurations with optional modem or dual AC power input
- Intelligent notification features to help data center managers monitor and troubleshoot equipment. Configurable email or pager alerts and SNMP traps can be sent when conditions require immediate action.
- Integrated support of Server Technology Sentry Cabinet Power Distribution Units allows data center managers to remotely reboot locked up devices
- SSH and SSL/TLS for secure connections and RADIUS, TACACS+, Secure LDAP, Active Directory and Kerberos for centralized authentication
- Flexible configuration and management using a simple web-based graphical interface, multi-level menus or command line

### Server Technology Sentry PDU Features

- Remotely monitor and control cabinet power in a data center or remote branch office
- Reboot single or dual corded servers with one command
- Remote configuration through either the HTML web GUI over HTTP/S or through a serial connection
- Available in rack or vertical mounting options with up to 96 outlets, multiple power in-feeds and environmental monitoring under one IP address
- SNMP notification and email alerts
- Single or 3-Phase, 100 to 415V and 16, 20, 30, 32, 60A inputs
- Integral temperature and humidity measurements
- 19-inch rack or Zero-U (tool-less) vertical mounting



**Digi International**  
11001 Bren Road E.  
Minnetonka, MN 55343  
United States  
1.877.912.3444 TF  
1.952.912.3444 Tel  
1.952.912.4952 Fax  
info@digi.com  
www.digi.com



### **Server Technology**

**HEADQUARTERS - NORTH AMERICA**  
**Server Technology, Inc.**  
1040 Sandhill Drive  
Reno, NV 89521  
United States  
1.775.284.2000 Tel  
1.775.284.2065 Fax  
sales@servertech.com  
www.servertech.com  
www.servertechblog.com

Digi Passport is a trademark of Digi International