

Environmental Monitoring Module and Sensors

Key Features

- > Each EMCU-1-1C is accessible via IP through networked PDU HTML GUI, Telnet or SNMP management
- > Cabinet Environment Status:
 - Supports two dual-function temperature & humidity probes (% RH)
 - Water & fluid detection sensor
- > Cabinet Intrusion Detection:
 - Supports four dry contact closure door sensors
- > Analog Input Sensor
 - Supports supplementary sensor requiring power feed
- > Notification Warnings:
 - SNMP and e-mail alerts through PDU interface
 - Thresholds & SNMP Traps to two destinations
- > IP Management through PDU
 - HTML Web Interface
 - Command Line Interface
 - No additional software required
- > Mounting
 - Flexible zero U mounting
 - Fast installation -- 5 minutes or less
- > Warranty: 2 years



IP-based Solution for Monitoring Environmental Conditions in the Data Center Equipment Cabinet

Ever increasing densities of vertically racked servers conserve valuable floor space in the data center, but the resulting power consumption and heat dissipation create new concerns for data center managers. Environmental Monitoring, particularly temperature & humidity, is a must for any sensitive infrastructure. The most recent ASHRAE thermal guidelines suggests three measurement points in the equipment rack.

Server Technology Smart and Switched PDUs support two combination temperature/humidity probes on the Master unit. Newer Expansion units support two additional sensors. If additional probes are required, the EMCU-1-1C Environmental Monitor provides additional inputs.

- Each EMCU supports:**
- > 2 Additional temperature and humidity measurements (EMTH-2-10)
 - > Water sensor (EMWS-1-1)
 - > 4 Dry contact closure door sensors

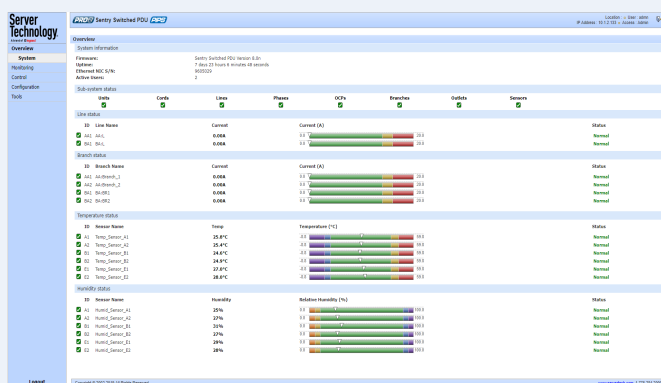
The EMCU-1-1C assures network managers that environmental conditions are within defined tolerances and that unauthorized entry into the equipment cabinets does not go unnoticed.

The EMCU-1-1C can be located in data centers, co-lo sites, web hosting facilities, telecom switching sites, POP sites, server closets, and any unmanned area that needs to be monitored. Install the EMCU-1-1C in the equipment cabinet and gain access to environmental conditions from a web or serial interface through one of Server Technology's IP address-able PDUs.

Model	Description	Mounting
EMCU-1-1C	Environmental Monitor Control Unit with (1) combination Temperature & Humidity Probe 10ft (3m)	Mounting tabs included for zero U mounting
EMTH-2-10	Temperature & Humidity Probe 9.8ft (3m)	—
EMWS-1-1	Water Sensor Probe, 12 in. (305 mm) detection cable, 10 ft (3 m) connection cord	—

Additional Specifications

Interface through HTML GUI



Analog Sensor

Accepts 3rd party analog sensors. Input 0 V to +5 VDC

Water Sensor Probe

1 ft (0.3 m) water sensing cable

10 ft (3 m) connector cord

Flexible, thermally bonded polymer coated sensor for increased strength and durability

Contact Closure Sensors

Accepts up to four 3rd party contact closer sensors. Wago® spring-loaded 3-position terminal block

LED Confirmation Indicators

Signal "Fault" conditions to contact closures

Web Interface

- > Temperature
- > Humidity
- > Water Detection
- > Door Cabinet Status

Measurement Range

0% to 100% RH / 0 °C to 100 °C

Temperature Accuracy

0 °C to 100 °C: < +/- 1 °C

Absolute RH Accuracy

0% to 100% RH: < +/- 3.5%

Dimensions (H x W x D)

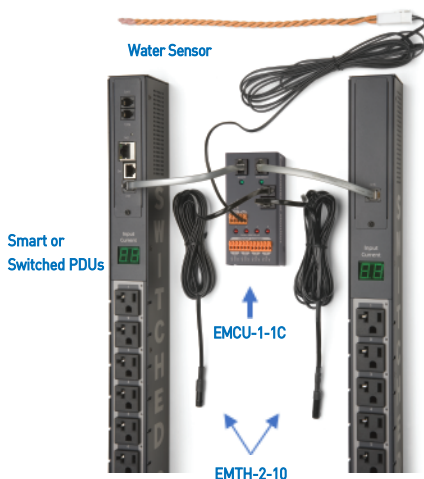
EMCU-1-1C: 4.57 x 2.32 x 1.22 in. (116 x 59 x 31 mm)

Weight

EMCU-1-1C: 8.8 oz. (250 g)

EMTH-2-10: 2.1 oz. (60 g)

EMWS-1-1: 3.2 oz. (91 g)



HEADQUARTERS -
NORTH AMERICA
Server Technology, Inc.
1040 Sandhill Drive Reno,
NV 89521 United States
1.775.284.2000 Tel
1.775.284.2065 Fax
sales@servertech.com
www.servertech.com
www.servertechblog.com

Western Europe, Middle East
and Africa
Server Technology
Fountain Court 2 Victoria
Square, Victoria Street, St.
Albans, AL1 3TF
United Kingdom
+44 (0) 1727 884676 Tel
+44 (0) 1727 220815 Fax
salesint@servertech.com

Central Europe, Eastern Europe
and Russia Niederlassung
Deutschland
Server Technology LLC
42119 Wuppertal
Germany
Tel: + 49 202 693917 x 0
Fax: + 49 202 693917-10
salesint@servertech.com

APAC
Server Technology
Room 2301, 23/F, Future
Plaza 111-113 How Ming
Street, Kwun Tong, Hong
Kong
Direct line: +852 3916 2048
Fax Line: +852 3916 2002
salesint@servertech.com