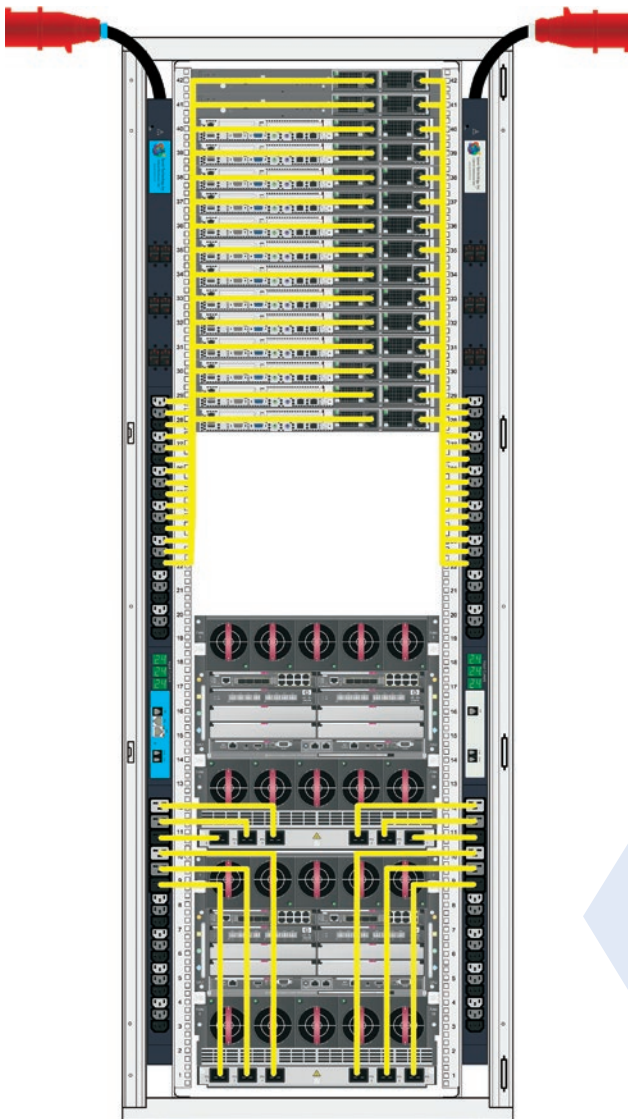


How do I specify a single cabinet PDU for use with a variety of equipment deployments?

APPLICATION NOTE HDOT-003 | Oct 2014

Learn how to design flexibility into your high-density cabinets with the HDOT™ Smart PDU featuring Server Technology's innovative C13 & C19 outlet design.



Typical Application

I have narrow 24" wide cabinets in which I deploy a variety of devices, from 1U switches and servers to 10U blade chassis and beyond. These cabinets may draw as much as 17kW and may be needed in North America & Europe on very short notice.

Our Solution

The HDOT™ PDU is specified with (6) C19 and (33) C13 alternating-phase outlets using Server Technology's **Build-Your-Own Smart PDU Tool**. These PDUs allow for high-density flexible deployment specified to meet your needs around the world. Additionally, the alternating-phase outlets allow for minimized cabling and easier phase balancing. Finally, add color identification without an increase in price or delivery time.

Pictured left is a CS39CD-4PAF2S60 Master PDU, with blue color coding, and a CL39CD-4PAF2S60 Link PDU, with white color coding, using 230/400V 32A IEC60309 inputs. Other power input options available.



High Density Outlet Technology

HDOT Smart PDUs Maximize Density in 42U Cabinets

Server Technology's High-Density Outlet Technology (HDOT™) PDUs meet the needs of a wide range of data center equipment cabinets. High power densities and reduced cabinet space require new and innovative products like Server Technology's own patented outlet technology that provides industry standard C13 and C19 outlets in a drastically reduced footprint. Additional features include high native cord retention that eliminates the need for custom and costly ancillary locking cord devices. Manufactured with robust high temperature materials carrying a UL94 V-0 flame rating makes these outlets ideally suited for harsh data center environments.

Key HDOT™ Benefits:

- > Industry standard C13 and C19 with minimized footprint
- > Maximum possible outlet density in an Intelligent PDU
- > High native cord retention, reducing the need for additional locking devices
- > Color-coded alternating-phase outputs for easy cabling
- > Operation to 65°C (149°F) ambient
- > Thousands of variations available using our online Build-Your-Own Smart PDU Tool

Key Smart PDU Benefits:

- > PIPS® (Per Inlet Power Sensing) high-accuracy measurements of current, voltage, power, and other key power metrics
- > Environmental measurements through plug-and-play probes
- > SNMP traps and email alerts
- > Master-Expansion linking allows single-IP access to the cabinet pair of PDUs

Interested in learning more about or building your own custom HDOT PDU? Visit us online at: www.servertech.com/products/build-your-own-pdu



Server Technology
Quality Rack Power Solutions



Stay Powered



Be Supported



Get Ahead

HEADQUARTERS NORTH AMERICA

Server Technology
1040 Sandhill Drive
Reno, NV 89521
United States
Tel: +1.775.284.2000
Fax: +1.775.284.2065
sales@servertech.com
www.servertech.com
www.servertechblog.com

WESTERN EUROPE, MIDDLE EAST & AFRICA

Server Technology
Fountain Court
2 Victoria Square
Victoria Street
St. Albans, AL1 3TF
United Kingdom
Tel: +44 (0) 1727 884676
Fax: +44 (0) 1727 220815
salesint@servertech.com

CENTRAL EUROPE, EASTERN EUROPE & RUSSIA NIEDERLASSUNG DEUTSCHLAND

Server Technology
42119 Wuppertal
Germany
Tel: +49 202 693917 x0
Fax: +49 202 693917-10
salesint@servertech.com

APAC

Server Technology
Room 2301, 23/F, Future Plaza
111-113 How Ming Street,
Kwun Tong, Hong Kong
Tel: +852 3916 2048
Fax: +852 3916 2002
salesint@servertech.com